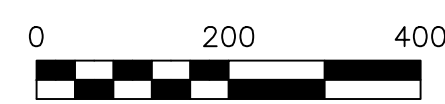


KILLBUCK TOWNSHIP  
 N.E. & S.E. QTRS. SECTION 23  
 T-8 N; R-7 W  
 MECHANIC TOWNSHIP  
 S.W. QTR. SECTION 22  
 T-8 N; R-7 W  
 HOLMES COUNTY, OHIO

SURVEYED FOR: RES AUCTIONS



- STONE FOUND
- 5/8" REBAR FOUND UNLESS OTHERWISE NOTED
- 5/8" REBAR SET WITH I.D. CAP I.D. CAP MARKED "BAKER 6938"

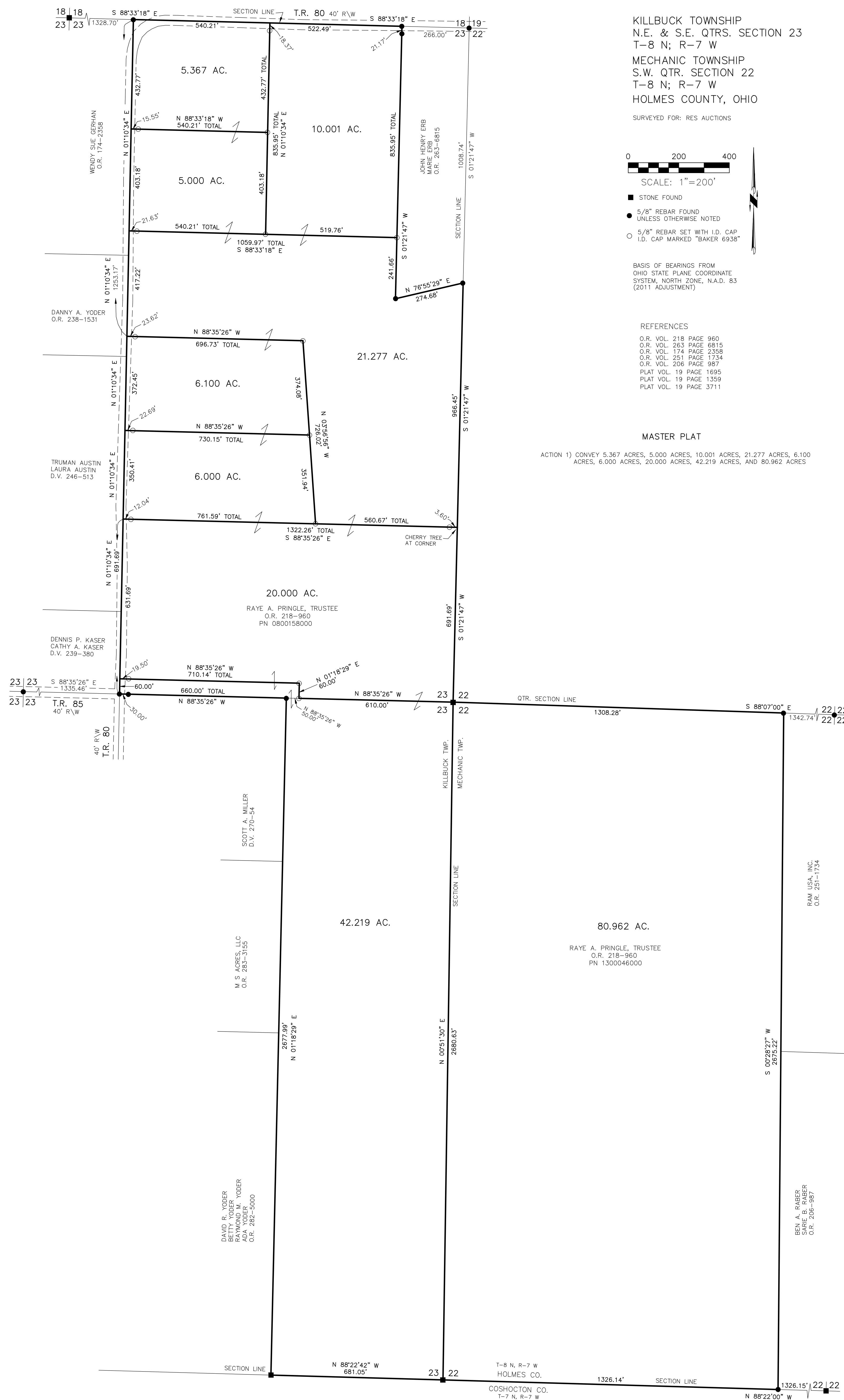
BASIS OF BEARINGS FROM  
 OHIO STATE PLANE COORDINATE  
 SYSTEM, NORTH ZONE, N.A.D. 83  
 (2011 ADJUSTMENT)

REFERENCES

- O.R. VOL. 218 PAGE 960
- O.R. VOL. 263 PAGE 6815
- O.R. VOL. 174 PAGE 2358
- O.R. VOL. 251 PAGE 1734
- O.R. VOL. 206 PAGE 987
- PLAT VOL. 19 PAGE 1695
- PLAT VOL. 19 PAGE 1359
- PLAT VOL. 19 PAGE 3711

MASTER PLAT

ACTION 1) CONVEY 5.367 ACRES, 5.000 ACRES, 10.001 ACRES, 21.277 ACRES, 6.100 ACRES, 6.000 ACRES, 20.000 ACRES, 42.219 ACRES, AND 80.962 ACRES



I CERTIFY THIS SURVEY TO BE CORRECT TO THE BEST OF MY KNOWLEDGE.  
 DONALD C. BAKER P.S. 6938  
 DATE: NOV. 15, 2022  
 TAB  
 FILE NAME: WORK6\S-431-22\CNK



BAKER SURVEYING, LLC  
 138 N. CLAY STREET  
 MILLERSBURG, OHIO 44654  
 PH. 330-674-4788  
 EMAIL: bakersurveying@gmail.com

APPROVED FOR TRANSFER ONLY  
 NO SUBDIVISION PLAT REQUIRED  
 (O.R.C. 713.001 & 711.131)  
 Lots not for building unless  
 approved by Board of Health  
 HOLMES CO. PLANNING COMMISSION  
 By AO Date 12/5/2022

Plat Approved  
 Holmes County Map Office  
 12/2/2022 MM