

0 200 400



SCALE: 1"=200'

- STONE FOUND
- ▲ R.R. SPIKE FOUND
- 5/8" REBAR FOUND UNLESS OTHERWISE NOTED
- 5/8" REBAR SET WITH I.D. CAP I.D. CAP MARKED "BAKER 6938"

BASIS OF BEARINGS FROM OHIO STATE PLANE COORDINATE SYSTEM, NORTH ZONE, N.A.D. 83 (2011 ADJUSTMENT)



I CERTIFY THIS SURVEY TO BE CORRECT TO THE BEST OF MY KNOWLEDGE.

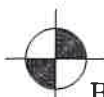
Donald C. Baker

DONALD C. BAKER P.S. 6938

DATE: OCT. 13, 2022

KES

FILE NAME: WORK6\S-463-22



BAKER SURVEYING, LLC
138 N. CLAY STREET
MILLERSBURG, OHIO 44654
PH. 330-674-4788

EMAIL: bakersurveying@gmail.com

REFERENCES

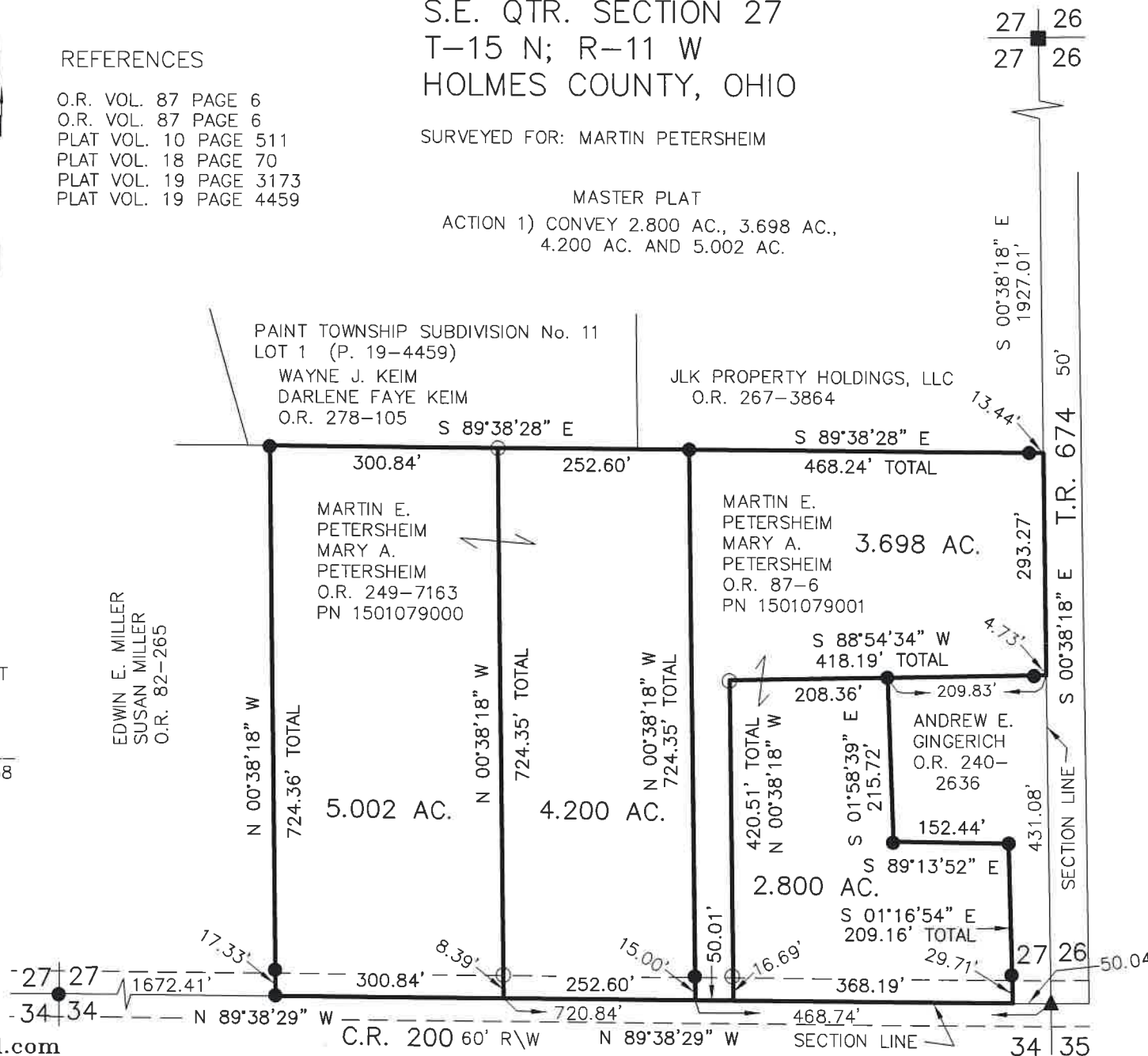
- O.R. VOL. 87 PAGE 6
- O.R. VOL. 87 PAGE 6
- PLAT VOL. 10 PAGE 511
- PLAT VOL. 18 PAGE 70
- PLAT VOL. 19 PAGE 3173
- PLAT VOL. 19 PAGE 4459

PAINT TOWNSHIP
S.E. QTR. SECTION 27
T-15 N; R-11 W
HOLMES COUNTY, OHIO

SURVEYED FOR: MARTIN PETERSHEIM

MASTER PLAT

ACTION 1) CONVEY 2.800 AC., 3.698 AC.,
4.200 AC. AND 5.002 AC.



20220005257
 B: 19 P: 4859
 FILED FOR RECORD IN
 HOLMES COUNTY, OH
 ANITA HALL, COUNTY RECORDER
 11/10/2022 02:11 PM
 SMALL PLAT . 40.00
 PAGES: 1
 ORV 283 PG 5010

APPROVED FOR TRANSFER ONLY
NO SUBDIVISION PLAT REQUIRED

(O.R.C. 711.001 & 711.131)

Lot(s) not for building unless
approved by Board of Health

HOLMES CO. PLANNING COMMISSION

By AO Date 11/8/2022



Plat Approved

Holmes County Map Office

10/20/2022 MM