

KILLBUCK TOWNSHIP  
 N.E., S.E., & S.W. QTRS. SECTION 3  
 N.E. & N.W. QTRS. SECTION 8  
 T-8 N; R-7 W  
 HOLMES COUNTY, OHIO

SURVEYED FOR: HAB FARMS



SCALE: 1"=300'

- STONE FOUND
- 5/8" REBAR FOUND UNLESS OTHERWISE NOTED
- 5/8" REBAR SET WITH I.D. CAP I.D. CAP MARKED "BAKER 6938"

20220005239

B: 19 P: 4857

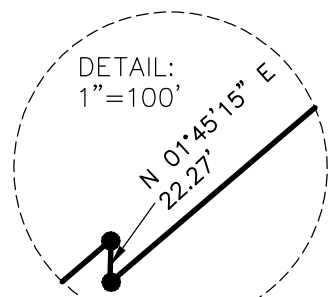
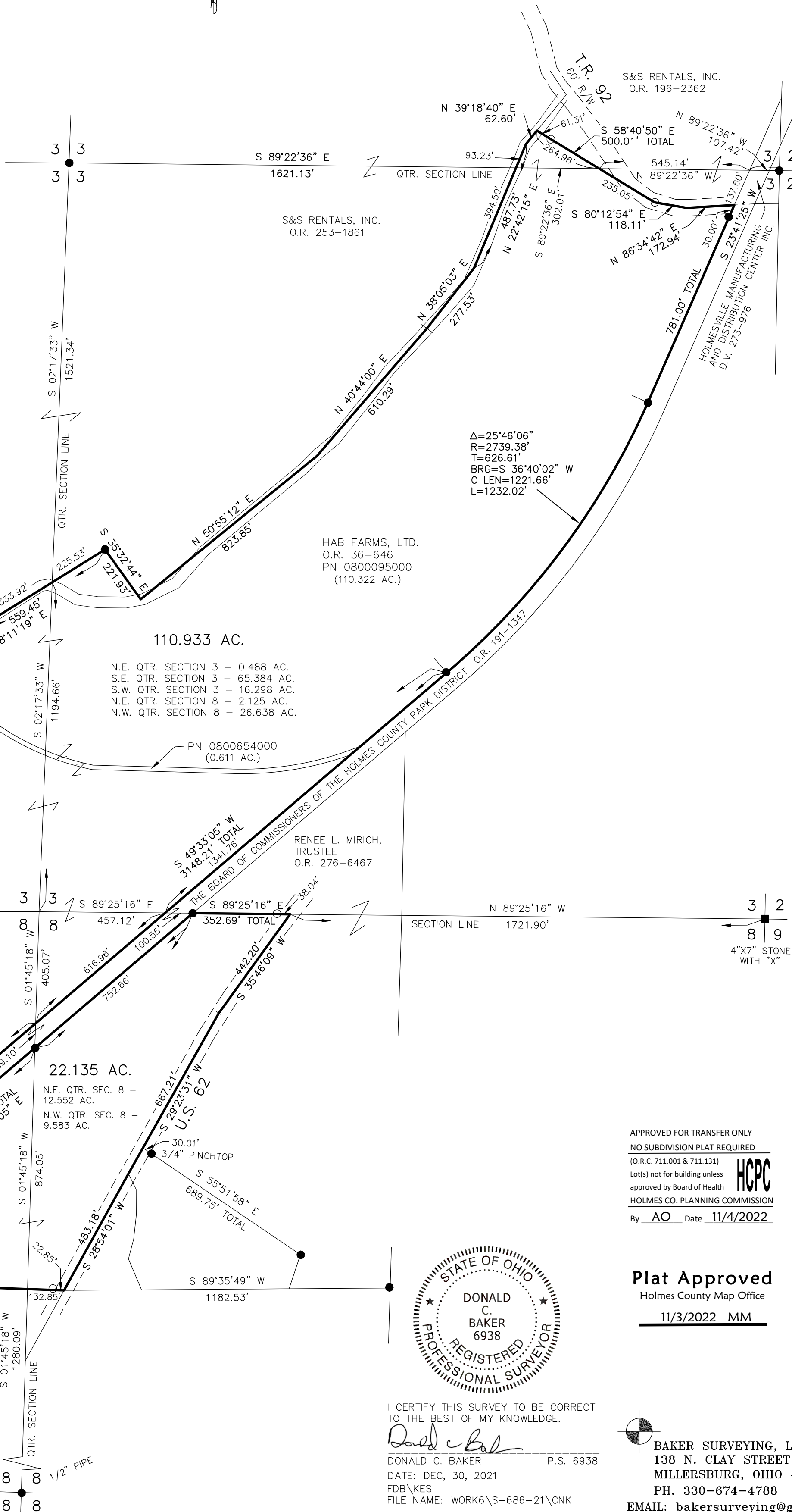
FILED FOR RECORD IN  
 HOLMES COUNTY, OH  
 ANITA HALL, COUNTY RECORDER  
 11/09/2022 02:06 PM  
 SMALL PLAT . 40.00  
 PAGES: 1

ORV 283 PG 4895  
 ORV 283 PG 4899

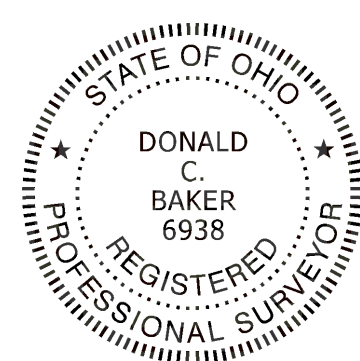
REFERENCES

- DEED VOL. 273 PAGE 976
- O.R. VOL. 253 PAGE 1861
- O.R. VOL. 196 PAGE 2362
- O.R. VOL. 36 PAGE 646
- O.R. VOL. 276 PAGE 6467
- O.R. VOL. 273 PAGE 6803
- O.R. VOL. 272 PAGE 51
- PLAT VOL. 9 PAGE 81
- PLAT VOL. 19 PAGE 399
- PLAT VOL. 2 PAGE 419
- PLAT VOL. 19 PAGE 1007

BASIS OF BEARINGS FROM  
 OHIO STATE PLANE COORDINATE  
 SYSTEM, NORTH ZONE, N.A.D. 83



APPROVED FOR TRANSFER ONLY  
 NO SUBDIVISION PLAT REQUIRED  
 (O.R.C. 711.001 & 711.131)  
 Lot(s) not for building unless  
 approved by Board of Health  
 HOLMES CO. PLANNING COMMISSION  
 By AO Date 11/4/2022



I CERTIFY THIS SURVEY TO BE CORRECT  
 TO THE BEST OF MY KNOWLEDGE.

*Donald C. Baker*  
 DONALD C. BAKER P.S. 6938  
 DATE: DEC, 30, 2021  
 FDB\KES  
 FILE NAME: WORK6\S-686-21\CNK

**Plat Approved**  
 Holmes County Map Office  
 11/3/2022 MM  
 BAKER SURVEYING, LLC  
 138 N. CLAY STREET  
 MILLERSBURG, OHIO 44654  
 PH. 330-674-4788  
 EMAIL: bakersurveying@gmail.com