

PRAIRIE TOWNSHIP
S.W. QTR. SECTION 29
T-14 N; R-13 W
HOLMES COUNTY, OHIO

SURVEYED FOR: IVAN RABER

0 100 200



SCALE: 1"=100'

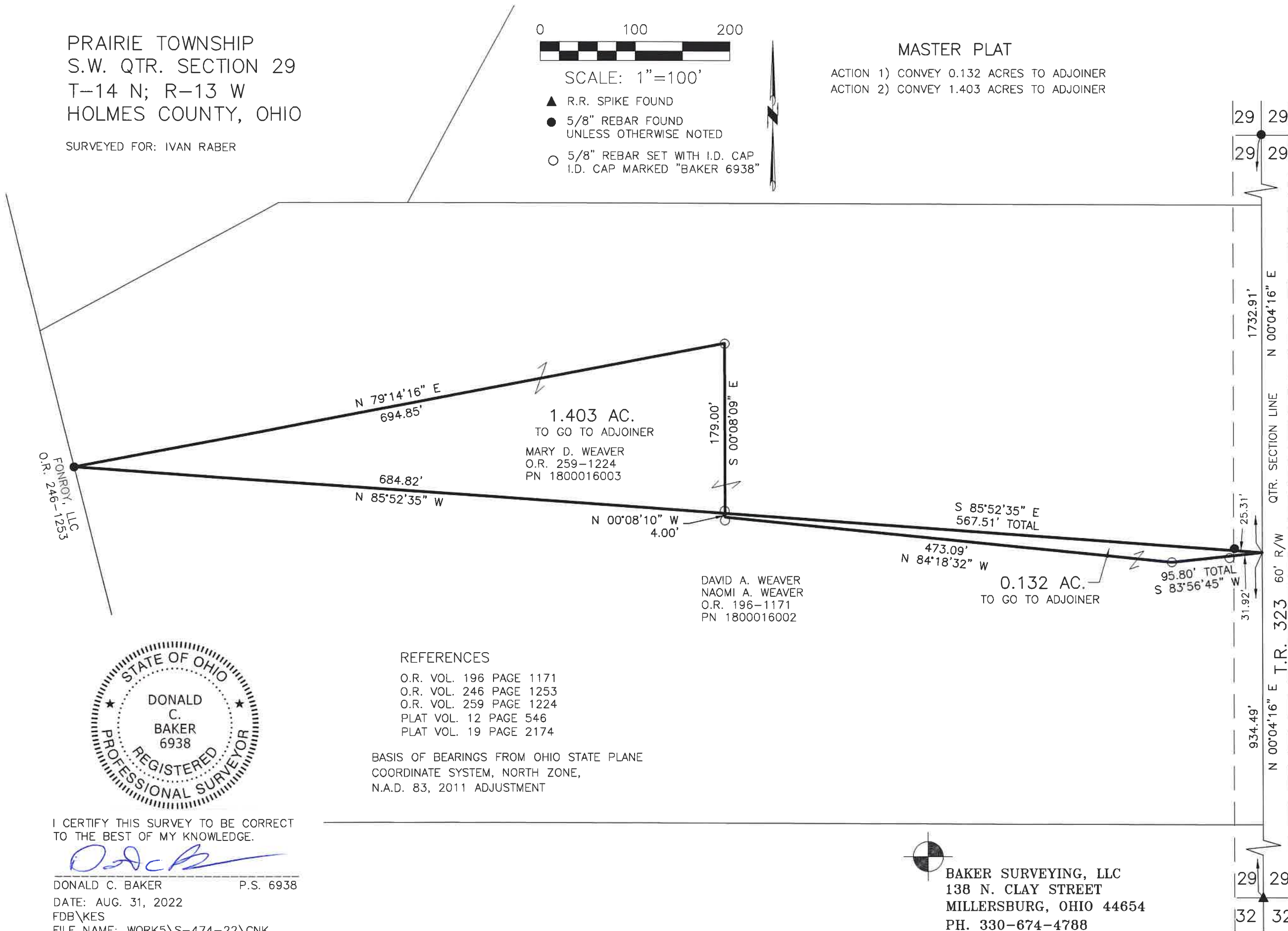
- ▲ R.R. SPIKE FOUND
- 5/8" REBAR FOUND UNLESS OTHERWISE NOTED
- 5/8" REBAR SET WITH I.D. CAP I.D. CAP MARKED "BAKER 6938"

MASTER PLAT

ACTION 1) CONVEY 0.132 ACRES TO ADJOINER
ACTION 2) CONVEY 1.403 ACRES TO ADJOINER

202200005118
B: 19 P: 4849
FILED FOR RECORD IN
HOLMES COUNTY, OH
ANITA HALL, COUNTY RECORDER
11/03/2022 02:31 PM
SMALL PLAT . 40.00
PAGES: 1

ORV 283 PG 4314
ORV 283 PG 4318



REFERENCES

- O.R. VOL. 196 PAGE 1171
- O.R. VOL. 246 PAGE 1253
- O.R. VOL. 259 PAGE 1224
- PLAT VOL. 12 PAGE 546
- PLAT VOL. 19 PAGE 2174

BASIS OF BEARINGS FROM OHIO STATE PLANE
COORDINATE SYSTEM, NORTH ZONE,
N.A.D. 83, 2011 ADJUSTMENT



I CERTIFY THIS SURVEY TO BE CORRECT
TO THE BEST OF MY KNOWLEDGE.

Donald C. Baker

DONALD C. BAKER P.S. 6938
DATE: AUG. 31, 2022
FDB\KES
FILE NAME: WORK5\S-474-22\CNK



BAKER SURVEYING, LLC
138 N. CLAY STREET
MILLERSBURG, OHIO 44654
PH. 330-674-4788
EMAIL: bakersurveying@gmail.com

APPROVED FOR TRANSFER ONLY
NO SUBDIVISION PLAT REQUIRED
(O.R.C. 711.001 & 711.131)
Lot(s) not for building unless
approved by Board of Health
HOLMES CO. PLANNING COMMISSION
By AO Date 9/14/2022



Plat Approved
Holmes County Map Office
9/13/2022 MM