

SCALE: 1"=200'

- ▲ R.R. SPIKE FOUND
- 5/8" REBAR FOUND
UNLESS OTHERWISE NOTED
- 5/8" REBAR SET WITH I.D. CAP
I.D. CAP MARKED "BAKER 6938"

BASIS OF BEARINGS FROM OHIO STATE PLANE COORDINATE SYSTEM, NORTH ZONE, N.A.D. 83, 2011 ADJUSTMENT

REFERENCES

- DEED VOL. 181 PAGE 543
- DEED VOL. 264 PAGE 745
- PLAT VOL. 14 PAGE 528
- PLAT VOL. 19 PAGE 838
- PLAT VOL. 19 PAGE 2464
- PLAT VOL. 19 PAGE 1899
- PLAT VOL. 19 PAGE 4571
- PLAT VOL. 19 PAGE 3117
- PLAT VOL. 19 PAGE 4490

RIPLEY TOWNSHIP
N.W. & N.E. QTRS. SECTION 18
T-17 N; R-14 W
HOLMES COUNTY, OHIO

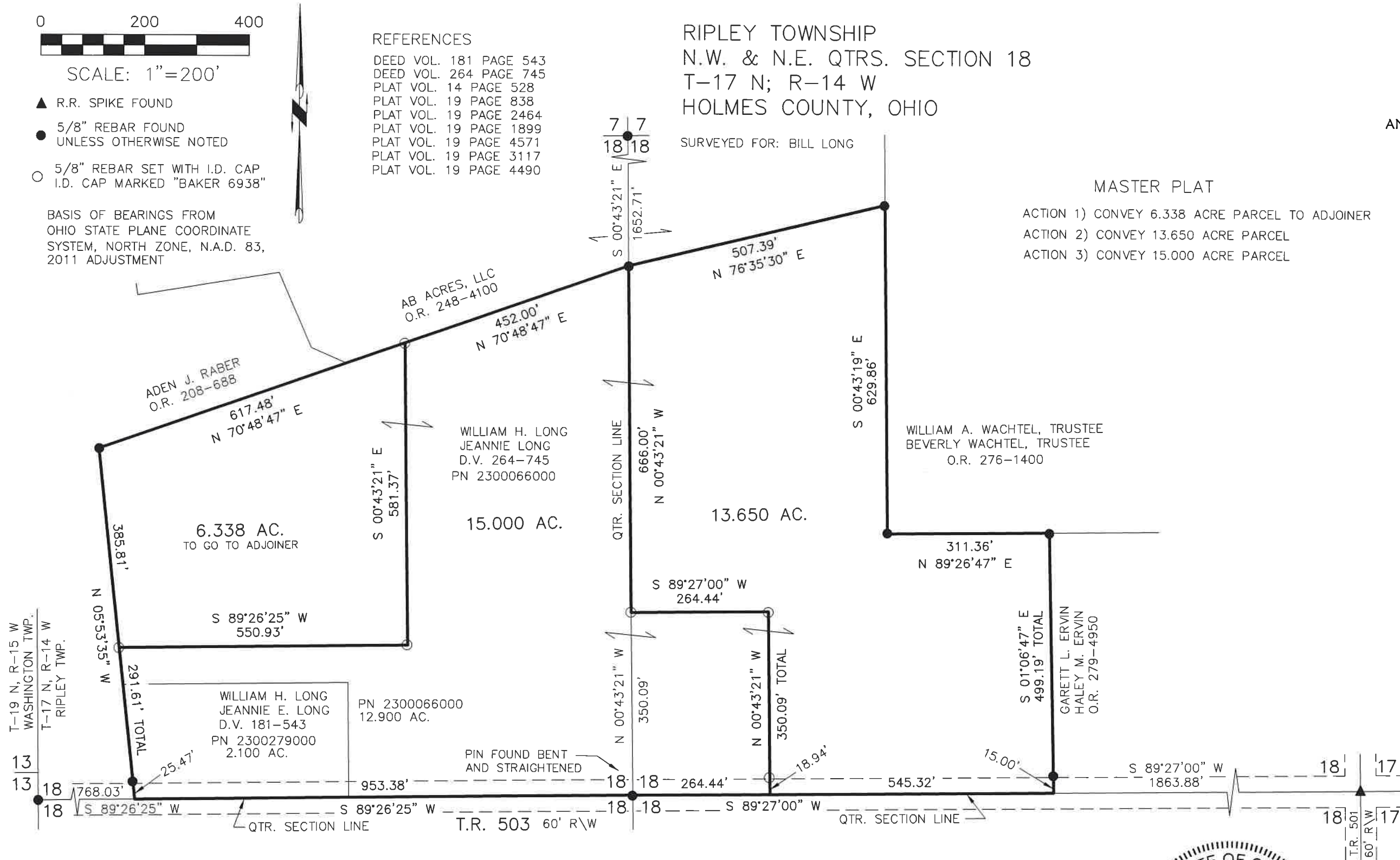
SURVEYED FOR: BILL LONG

202200004560
B: 19 P: 4818
FILED FOR RECORD IN
HOLMES COUNTY, OH
ANITA HALL, COUNTY RECORDER
09/28/2022 01:16 PM
SMALL PLAT . 40.00
PAGES: 1

MASTER PLAT

- ACTION 1) CONVEY 6.338 ACRE PARCEL TO ADJOINER
- ACTION 2) CONVEY 13.650 ACRE PARCEL
- ACTION 3) CONVEY 15.000 ACRE PARCEL

ORV 283 PG 1582
ORV 283 PG 1585
ORV 283 PG 1588



APPROVED FOR TRANSFER ONLY
NO SUBDIVISION PLAT REQUIRED
(O.R.C. 711.001 & 711.131)
Lot(s) not for building unless approved by Board of Health
HOLMES CO. PLANNING COMMISSION
By AO Date 9/23/2022



Plat Approved
Holmes County Map Office
9/22/2022 MM

BAKER SURVEYING, LLC
138 N. CLAY STREET
MILLERSBURG, OHIO 44654
PH. 330-674-4788
EMAIL: bakersurveying@gmail.com

I CERTIFY THIS SURVEY TO BE CORRECT TO THE BEST OF MY KNOWLEDGE.

Donald C. Baker
DONALD C. BAKER P.S. 6938
DATE: AUG. 12, 2022
TAB\GRB
FILE NAME: WORK6\S-446-22

