

SCALE: 1" = 300'

- 5/8" REBAR FOUND UNLESS OTHERWISE NOTED
- 5/8" REBAR SET WITH I.D. CAP I.D. CAP MARKED "BAKER 6938"

BASIS OF BEARINGS FROM OHIO STATE PLANE COORDINATE SYSTEM, NORTH ZONE, N.A.D. 83 (2011 ADJUSTMENT)

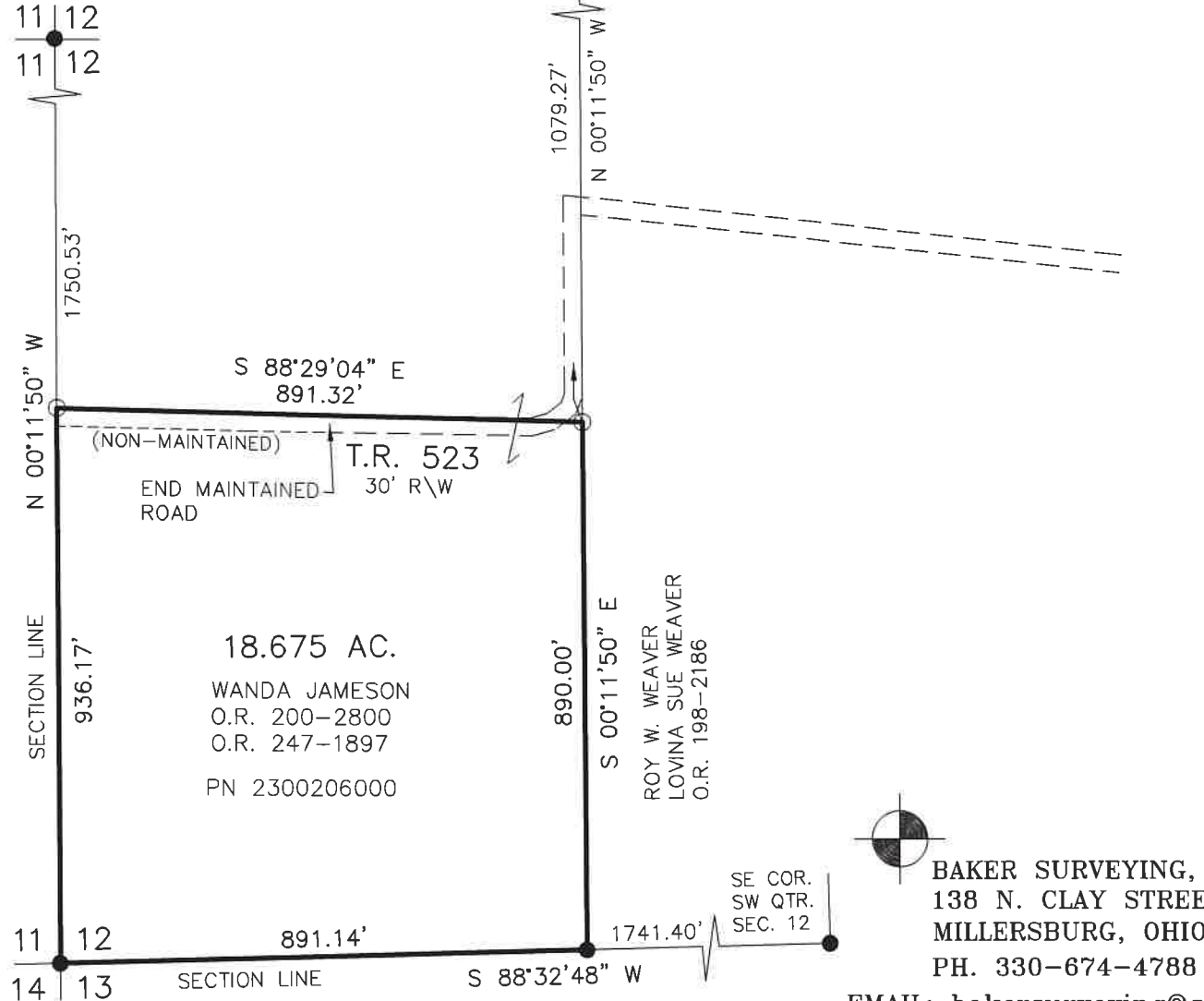
REFERENCES

- O.R. VOL. 198 PAGE 2186
- O.R. VOL. 247 PAGE 1897
- PLAT VOL. 19 PAGE 2381



I CERTIFY THIS SURVEY TO BE CORRECT TO THE BEST OF MY KNOWLEDGE.

Donald C. Baker
 DONALD C. BAKER P.S. 6938
 DATE: JULY 12, 2022
 TAB\GRB
 FILE NAME: WORK6\S-365-22



RIPLEY TOWNSHIP
 S.W. QTR. SECTION 12
 T-17 N; R-14 W
 HOLMES COUNTY, OHIO

SURVEYED FOR: JOHN MILLER

202200004451
 B: 19 P: 4812
 FILED FOR RECORD IN
 HOLMES COUNTY, OH
 ANITA HALL, COUNTY RECORDER
 09/21/2022 02:38 PM
 SMALL PLAT . 40.00
 PAGES: 1

ORV 283 PG 925
 ORV 283 PG 935

APPROVED FOR TRANSFER ONLY
 NO SUBDIVISION PLAT REQUIRED
 (O.R.C. 711.001 & 711.131)
 Lot(s) not for building unless
 approved by Board of Health
 HOLMES CO. PLANNING COMMISSION
 By AO Date 9/9/2022



BAKER SURVEYING, LLC
 138 N. CLAY STREET
 MILLERSBURG, OHIO 44654
 PH. 330-674-4788
 EMAIL: bakersurveying@gmail.com

Plat Approved
 Holmes County Map Office
 9/7/2022 MM