

HARDY TOWNSHIP
S.E. QTR. SECTION 11
N.E. QTR. SECTION 20
T-9 N; R-7 W
HOLMES COUNTY, OHIO

SURVEYED FOR: CHUCK NICHOLSON

0 200 400



SCALE: 1"=200'

- 5/8" REBAR FOUND UNLESS OTHERWISE NOTED
- MAG NAIL SET
- 5/8" REBAR SET WITH I.D. CAP I.D. CAP MARKED "BAKER SURVEYING LLC"

REFERENCES

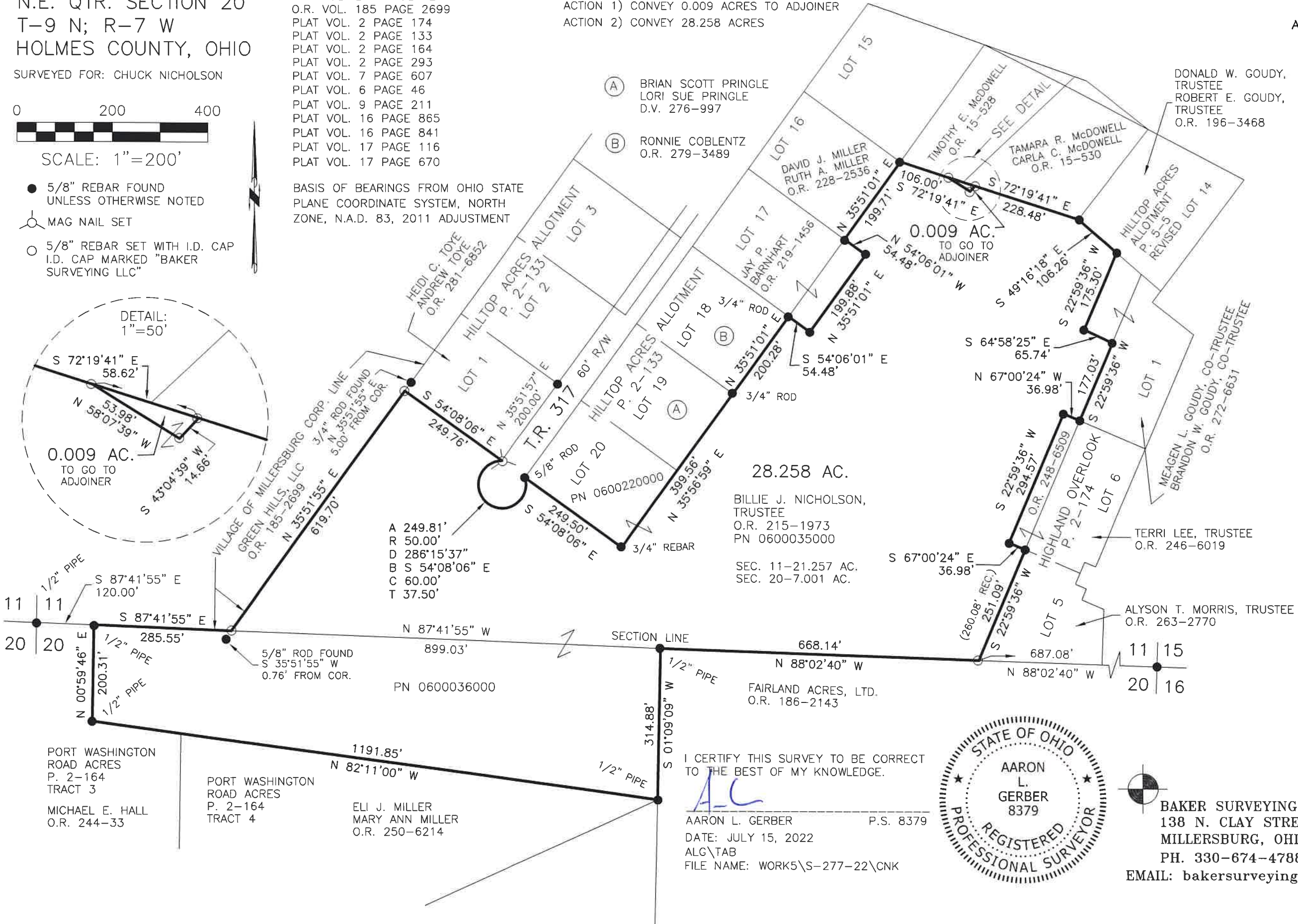
- O.R. VOL. 215 PAGE 1973
- O.R. VOL. 186 PAGE 2143
- O.R. VOL. 250 PAGE 6214
- O.R. VOL. 185 PAGE 2699
- PLAT VOL. 2 PAGE 174
- PLAT VOL. 2 PAGE 133
- PLAT VOL. 2 PAGE 164
- PLAT VOL. 2 PAGE 293
- PLAT VOL. 7 PAGE 607
- PLAT VOL. 6 PAGE 46
- PLAT VOL. 9 PAGE 211
- PLAT VOL. 16 PAGE 865
- PLAT VOL. 16 PAGE 841
- PLAT VOL. 17 PAGE 116
- PLAT VOL. 17 PAGE 670

BASIS OF BEARINGS FROM OHIO STATE PLANE COORDINATE SYSTEM, NORTH ZONE, N.A.D. 83, 2011 ADJUSTMENT

MASTER PLAT

- ACTION 1) CONVEY 0.009 ACRES TO ADJOINER
- ACTION 2) CONVEY 28.258 ACRES

- (A) BRIAN SCOTT PRINGLE
LORI SUE PRINGLE
D.V. 276-997
- (B) RONNIE COBLENTZ
O.R. 279-3489



202200004433
B: 19 P: 4811
FILED FOR RECORD IN
HOLMES COUNTY, OH
ANITA HALL, COUNTY RECORDER
09/21/2022 10:31 AM
SMALL PLAT . 40.00
PAGES: 1

ORV 283 PG 878
ORV 283 PG 881

APPROVED FOR TRANSFER ONLY
NO SUBDIVISION PLAT REQUIRED
(O.R.C. 711.001 & 711.131)
Lot(s) not for building unless
approved by Board of Health
HOLMES CO. PLANNING COMMISSION
By AO Date 9/1/2022



Plat Approved
Holmes County Map Office
8/31/2022 MM

I CERTIFY THIS SURVEY TO BE CORRECT TO THE BEST OF MY KNOWLEDGE.

AARON L. GERBER P.S. 8379
DATE: JULY 15, 2022
ALG\TAB
FILE NAME: WORK5\S-277-22\CNK



BAKER SURVEYING, LLC
138 N. CLAY STREET
MILLERSBURG, OHIO 44654
PH. 330-674-4788
EMAIL: bakersurveying@gmail.com