

**Mechanic Township
N.W. Qtr. Section 12
T-8 N; R-7 W
Holmes County, Ohio**

SURVEYED FOR: Mark Hoxworth

REFERENCES:
Deeds as shown

- Plat Vol. 19 Page 3677
- Plat Vol. 19 Page 2959
- Plat Vol. 19 Page 283
- Plat Vol. 19 Page 3303
- Plat Vol. 16 Page 283

Basis of Bearing from Grid North, Ohio State Plane Coordinate System, North Zone, NAD 83.

Donald L. Kiner
O.R. Vol. 231 Page 3008

1.094 Acres
Mark P. Hoxworth
Michael R. Hoxworth
Jerry A. Hoxworth, Jr.
O.R. Vol. 256 Page 615
PPN 1300165001

James L. Schafer, trustee
O.R. Vol. 271 Page 3790

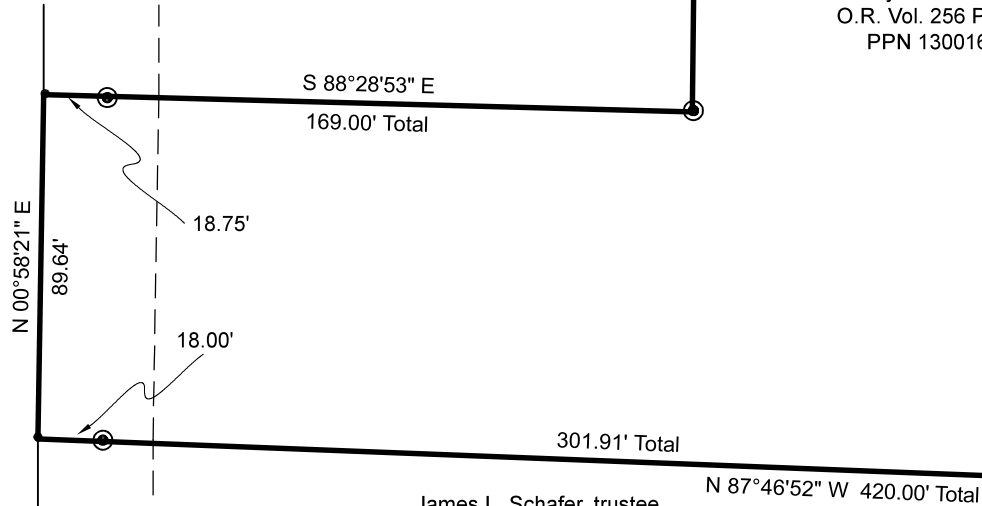
Edward S Hostetler
Esther M. Hostetler
O.R. Vol. 267 Page 1181

Mark J. Siedel
Penny L. Siedel
Seth E. Siedel
Erica Siedel
O.R. Vol. 266 Page 3887

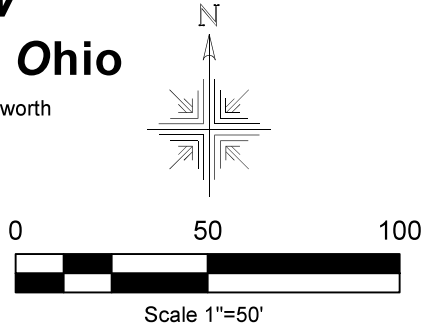
John Paul Pahoundis
O.R. Vol. 242 Page 2367

(60' R/W)

C.R. 150



- Pipe Found
- ⊗ 5/8" Capped Pin Found "Johnson"
- 5/8" Capped Pin Set "Galbraith"
- Point



202200004351
B: 19 P: 4805
FILED FOR RECORD IN
HOLMES COUNTY, OH
ANITA HALL, COUNTY RECORDER
09/15/2022 01:51 PM
SMALL PLAT . 40.00
PAGES: 1

ORV 283 Pg 458

Pioneer Surveying & Services, LLC.
5434 Township Road 377
Millersburg, Ohio 44654
Phone: 330-231-0497
Email: caleb@pioneersurveyingandservices.com

I certify this survey to be correct to the best of my knowledge.

Caleb Galbraith

Caleb Jerome Galbraith P.S. 8703
Date: March 28, 2022
Job ID:6222-MC03



APPROVED FOR TRANSFER ONLY
NO SUBDIVISION PLAT REQUIRED

(O.R.C. 711.001 & 711.131)
Lot(s) not for building unless approved by Board of Health
HOLMES CO. PLANNING COMMISSION



By AO Date 9/9/2022

12	12
12	12



Plat Approved
Holmes County Map Office

9/8/2022 MM