

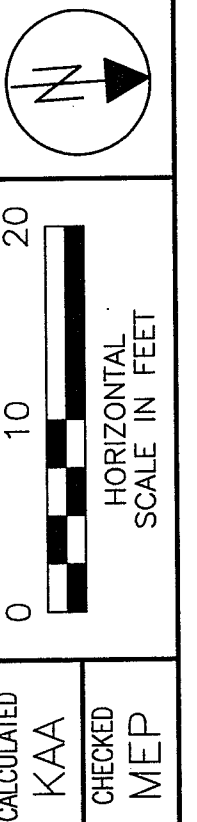
VILLAGE OF MILLERSBURG
HOLMES COUNTY, OHIO
NE QUARTER OF SECTION 19
T-9, R-7

202200004241
B: 19 P: 4793
FILED FOR RECORD IN
HOLMES COUNTY, OH
ANITA HALL COUNTY RECORDER
09/09/2022 11:29 AM
PLAT MED. 43.20
PAGES: 1
ORV 282 PG 7430

FOR MONUMENT AND CENTERLINE ALIGNMENT TABLES SEE SHEET 2

STRUCTURE KEY

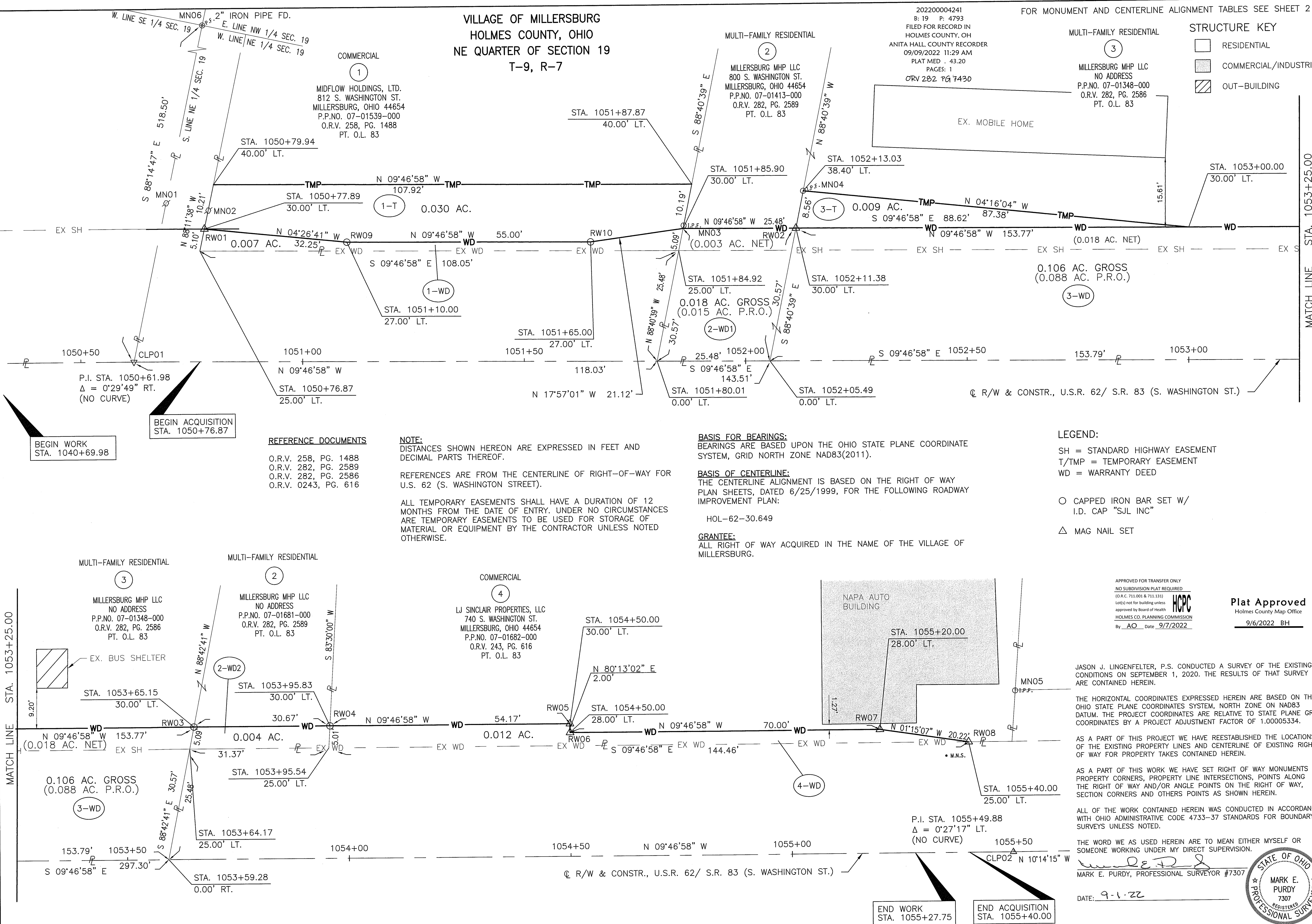
- RESIDENTIAL
- COMMERCIAL/INDUSTRIAL
- OUT-BUILDING



CALCULATED
KAA
CHECKED
MEP

RIGHT OF WAY PLAN

HOL-SOUTH WASHINGTON STREET SIDEWALKS



REFERENCE DOCUMENTS
O.R.V. 258, PG. 1488
O.R.V. 282, PG. 2589
O.R.V. 282, PG. 2586
O.R.V. 0243, PG. 616

NOTE:
DISTANCES SHOWN HEREON ARE EXPRESSED IN FEET AND DECIMAL PARTS THEREOF.

REFERENCES ARE FROM THE CENTERLINE OF RIGHT-OF-WAY FOR U.S. 62 (S. WASHINGTON STREET).

ALL TEMPORARY EASEMENTS SHALL HAVE A DURATION OF 12 MONTHS FROM THE DATE OF ENTRY. UNDER NO CIRCUMSTANCES ARE TEMPORARY EASEMENTS TO BE USED FOR STORAGE OF MATERIAL OR EQUIPMENT BY THE CONTRACTOR UNLESS NOTED OTHERWISE.

BASIS FOR BEARINGS:
BEARINGS ARE BASED UPON THE OHIO STATE PLANE COORDINATE SYSTEM, GRID NORTH ZONE NAD83(2011).

BASIS OF CENTERLINE:
THE CENTERLINE ALIGNMENT IS BASED ON THE RIGHT OF WAY PLAN SHEETS, DATED 6/25/1999, FOR THE FOLLOWING ROADWAY IMPROVEMENT PLAN:

HOL-62-30.649

GRANTEE:
ALL RIGHT OF WAY ACQUIRED IN THE NAME OF THE VILLAGE OF MILLERSBURG.

LEGEND:
SH = STANDARD HIGHWAY EASEMENT
T/TMP = TEMPORARY EASEMENT
WD = WARRANTY DEED

○ CAPPED IRON BAR SET W/ I.D. CAP "SJL INC"
△ MAG NAIL SET

APPROVED FOR TRANSFER ONLY
NO SUBDIVISION PLAT REQUIRED
(10 K.C. 711.001 & 711.131)
Int'l) not for building unless approved by Board of Health
HOLMES CO. PLANNING COMMISSION
By: AO Date: 9/7/2022

Plat Approved
Holmes County Map Office
9/6/2022 BH

JASON J. LINGENFELTER, P.S. CONDUCTED A SURVEY OF THE EXISTING CONDITIONS ON SEPTEMBER 1, 2020. THE RESULTS OF THAT SURVEY ARE CONTAINED HEREIN.

THE HORIZONTAL COORDINATES EXPRESSED HEREIN ARE BASED ON THE OHIO STATE PLANE COORDINATES SYSTEM, NORTH ZONE ON NAD83 DATUM. THE PROJECT COORDINATES ARE RELATIVE TO STATE PLANE GRID COORDINATES BY A PROJECT ADJUSTMENT FACTOR OF 1.00005334.

AS A PART OF THIS PROJECT WE HAVE REESTABLISHED THE LOCATIONS OF THE EXISTING PROPERTY LINES AND CENTERLINE OF EXISTING RIGHT OF WAY FOR PROPERTY TAKES CONTAINED HEREIN.

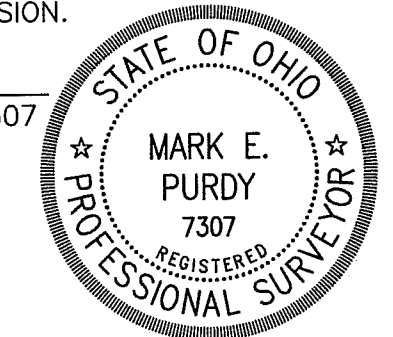
AS A PART OF THIS WORK WE HAVE SET RIGHT OF WAY MONUMENTS AT PROPERTY CORNERS, PROPERTY LINE INTERSECTIONS, POINTS ALONG THE RIGHT OF WAY AND/OR ANGLE POINTS ON THE RIGHT OF WAY, SECTION CORNERS AND OTHERS POINTS AS SHOWN HEREIN.

ALL OF THE WORK CONTAINED HEREIN WAS CONDUCTED IN ACCORDANCE WITH OHIO ADMINISTRATIVE CODE 4733-37 STANDARDS FOR BOUNDARY SURVEYS UNLESS NOTED.

THE WORD WE AS USED HEREIN ARE TO MEAN EITHER MYSELF OR SOMEONE WORKING UNDER MY DIRECT SUPERVISION.

MARK E. PURDY, PROFESSIONAL SURVEYOR #7307

DATE: 9-1-22



EM-2676.DWG

EXISTING BOUNDARY MONUMENTS							
POINT NUMBER	GROUND COORDINATES U.S. SURVEY FEET		STATION	OFFSET	SIDE	ELEVATION	DESCRIPTION / NOTES
	NORTHING	EASTING					
MN01	320469.23	2130580.10	1050+69.29	35.82'	LT.	821.89	RAILROAD SPIKE FOUND
MN02	320478.86	2130580.11	1050+78.78	34.18'	LT.	822.00	RAILROAD SPIKE FOUND
MN03	320585.15	2130565.32	1051+86.04	30.69'	LT.	822.55	IRON PIN FOUND - STAMPED "BAKER"
MN04	320610.41	2130553.14	1052+13.00	38.40'	LT.	821.28	5/8" IRON PIN FOUND
MN05	320943.41	2130497.60	1055+50.89	36.55'	LT.	824.33	IRON PIN FOUND - STAMPED "BAKER"
MN06	320483.98	2130098.38	1051+65.68	508.03'	LT.	815.71	2" IRON PIPE FOUND
MN07	320181.64	2130513.85	1047+98.45	152.26'	LT.	819.22	1.25" IRON PIPE FOUND
MN08	320182.30	2130489.03	1048+03.53	176.57'	LT.	819.37	IRON PIN FOUND - STAMPED "BAKER"
MN09	320286.66	2130481.11	1049+07.62	165.73'	LT.	823.91	IRON PIN FOUND - STAMPED "BAKER"
MN10	320474.91	2130382.16	1051+08.52	229.92'	LT.	818.70	IRON PIN FOUND - STAMPED "BAKER"
MN11	320508.83	2130326.78	1051+51.35	278.73'	LT.	817.65	5/8" IRON PIN FOUND
MN12	320590.73	2130329.28	1052+31.64	262.35'	LT.	818.49	1.5" IRON PIPE FOUND
MN13	320943.41	2130497.60	1055+50.89	36.54'	LT.	824.33	IRON PIN FOUND - STAMPED "BAKER"
PROPOSED RIGHT-OF-WAY MONUMENTS							
POINT NUMBER	GROUND COORDINATES U.S. SURVEY FEET		STATION	OFFSET	SIDE		DESCRIPTION / NOTES
	NORTHING	EASTING					
RW01	320478.70	2130584.37	1050+77.89	30.00'	LT		MAG NAIL SET
RW02	320610.24	2130561.69	1052+11.38	30.00'	LT.		MAG NAIL SET
RW03	320761.78	2130535.57	1053+65.15	30.00'	LT.		CAPPED IRON BAR SET W/ I.D. CAP "SJL INC"
RW04	320792.01	2130530.35	1053+95.83	30.00'	LT.		CAPPED IRON BAR SET W/ I.D. CAP "SJL INC"
RW05	320845.39	2130521.15	1054+50.00	30.00'	LT.		MAG NAIL SET
RW06	320845.73	2130523.12	1054+50.00	28.00'	LT.		MAG NAIL SET
RW07	320914.72	2130511.23	1055+20.00	28.00'	LT.		MAG NAIL SET
RW08	320934.93	2130510.78	1055+40.00	25.00'	LT.		MAG NAIL SET
RW09	320510.85	2130581.88	1051+10.00	27.00'	LT.		CAPPED IRON BAR SET W/ I.D. CAP "SJL INC"
RW10	320565.05	2130572.53	1051+65.00	27.00'	LT.		CAPPED IRON BAR SET W/ I.D. CAP "SJL INC"
CENTERLINE ALIGNMENT							
POINT NUMBER	GROUND COORDINATES U.S. SURVEY FEET		STATION	OFFSET	SIDE		DESCRIPTION / NOTES
	NORTHING	EASTING					
CLP01	320468.12	2130616.64	1050+61.98	0			PI @ R/W
CLP02	320948.92	2130533.74	1055+49.88	0			PI @ R/W

PROJECT SCALE FACTOR (GRID TO GROUND): 1.00005334
 COMBINED SCALE FACTOR (GROUND TO GRID): 0.99994666
 ORIGIN: 0,0

CALCULATED CJS
 CHECKED MEP
 MONUMENT TABLES
 HOL-SOUTH WASHINGTON STREET SIDEWALKS
 2/2