

CLARK TOWNSHIP  
 N.E. QTR. SECTION 25  
 T-8 N; R-4 W  
 HOLMES COUNTY, OHIO

SURVEYED FOR: KAUFMAN REALTY



SCALE: 1"=60'

- 5/8" REBAR FOUND UNLESS OTHERWISE NOTED
- 5/8" REBAR SET WITH I.D. CAP I.D. CAP MARKED "BAKER 6938"



I CERTIFY THIS SURVEY TO BE CORRECT TO THE BEST OF MY KNOWLEDGE.

*Donald C. Baker*  
 DONALD C. BAKER P.S. 6938  
 DATE: MAY 16, 2022  
 VJD\GRB  
 FILE NAME: WORK6\S-258-22\CNK

PN 0200925000



DONNA K. POPE  
 O.R. 115-748  
 PN 0200934001

BILLY R. POPE, SR.  
 O.R. 120-928

REFERENCES

- O.R. VOL. 115 PAGE 748
- O.R. VOL. 120 PAGE 928
- O.R. VOL. 265 PAGE 2318
- PLAT VOL. 14 PAGE 210
- PLAT VOL. 14 PAGE 209
- PLAT VOL. 14 PAGE 21

BASIS OF BEARINGS FROM OHIO STATE PLANE COORDINATE SYSTEM, NORTH ZONE, N.A.D. 83 (2011 ADJUSTMENT)

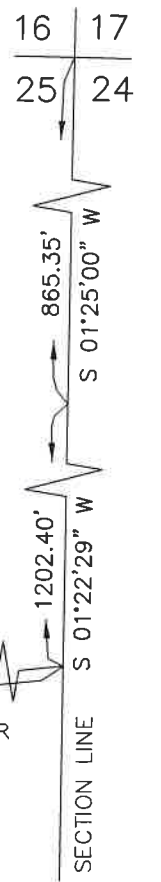
APPROVED FOR TRANSFER ONLY  
 NO SUBDIVISION PLAT REQUIRED  
 (O.R.C. 711.001 & 711.131)  
 Lot(s) not for building unless approved by Board of Health  
 HOLMES CO. PLANNING COMMISSION  
 By AO Date 6/22/2022



**Plat Approved**  
 Holmes County Map Office  
6/22/2022 Rg

202200003070  
 B: 19 P: 4730  
 FILED FOR RECORD IN  
 HOLMES COUNTY, OH  
 ANITA HALL, COUNTY RECORDER  
 07/01/2022 10:36 AM  
 SMALL PLAT . 40.00  
 PAGES: 1

ORV 282 PG 1181  
 ORV 282 PG 1197



BAKER SURVEYING, LLC  
 138 N. CLAY STREET  
 MILLERSBURG, OHIO 44654  
 PH. 330-674-4788  
 EMAIL: bakersurveying@gmail.com