

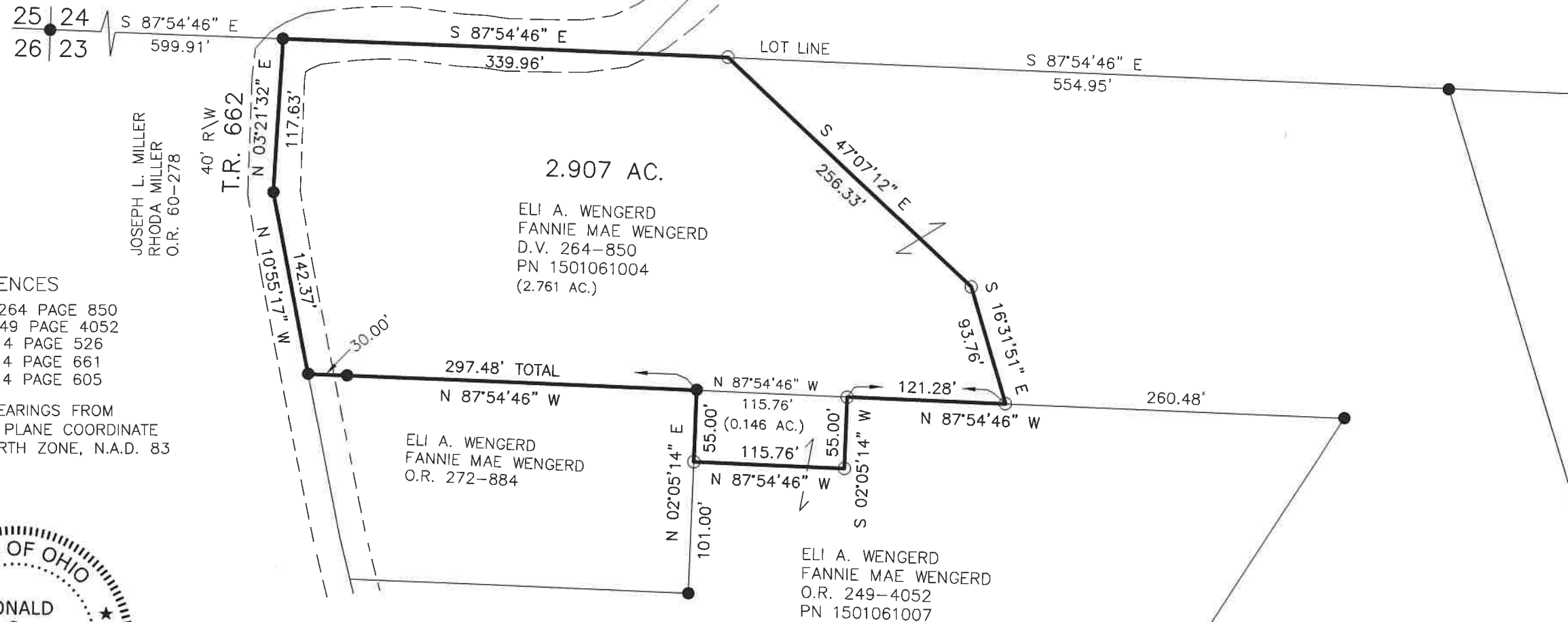
- 5/8" REBAR FOUND UNLESS OTHERWISE NOTED
- 5/8" REBAR SET WITH I.D. CAP I.D. CAP MARKED "BAKER SURVEYING LLC"

PAINT TOWNSHIP
 3RD. QTR., LOT 23
 T-10 N; R-4 W
 HOLMES COUNTY, OHIO

SURVEYED FOR: ELI WENGERD

202200002831
 B: 19 P: 4719
 FILED FOR RECORD IN
 HOLMES COUNTY, OH
 ANITA HALL, COUNTY RECORDER
 06/17/2022 12:06 PM
 SMALL PLAT . 40.00
 PAGES: 1

ORV 282 PG 36



REFERENCES

DEED VOL. 264 PAGE 850
 O.R. VOL. 249 PAGE 4052
 PLAT VOL. 14 PAGE 526
 PLAT VOL. 14 PAGE 661
 PLAT VOL. 14 PAGE 605

BASIS OF BEARINGS FROM
 OHIO STATE PLANE COORDINATE
 SYSTEM, NORTH ZONE, N.A.D. 83



I CERTIFY THIS SURVEY TO BE CORRECT
 TO THE BEST OF MY KNOWLEDGE.

Donald C. Baker

DONALD C. BAKER P.S. 6938
 DATE: JAN. 20, 2022
 FDB\KES
 FILE NAME: WORK6\S-13-22



BAKER SURVEYING, LLC
 138 N. CLAY STREET
 MILLERSBURG, OHIO 44654
 PH. 330-674-4788
 EMAIL: bakersurveying@gmail.com

APPROVED FOR TRANSFER ONLY
 NO SUBDIVISION PLAT REQUIRED
 (O.R.C. 711.001 & 711.131)
 Lot(s) not for building unless
 approved by Board of Health
 HOLMES CO. PLANNING COMMISSION
 By TS Date 6/9/2022



Plat Approved
 Holmes County Map Office
 4/13/2022 MM