

0 200 400

SCALE: 1"=200'

- STONE FOUND
- 5/8" REBAR FOUND UNLESS OTHERWISE NOTED
- △ R.R. SPIKE SET
- 5/8" REBAR SET WITH I.D. CAP I.D. CAP MARKED "BAKER SURVEYING LLC"

REFERENCES

- O.R. VOL. 178 PAGE 2483
- PLAT VOL. 11 PAGE 71
- PLAT VOL. 19 PAGE 328
- PLAT VOL. 19 PAGE 3569
- PLAT VOL. 19 PAGE 3474
- PLAT VOL. 17 PAGE 727
- PLAT VOL. 19 PAGE 4009

BASIS OF BEARINGS FROM OHIO STATE PLANE COORDINATE SYSTEM, NORTH ZONE, N.A.D. 83 (2011 ADJUSTMENT)

PRAIRIE TOWNSHIP
N.W. QTR. SECTION 7
T-13 N; R-13 W
HOLMES COUNTY, OHIO

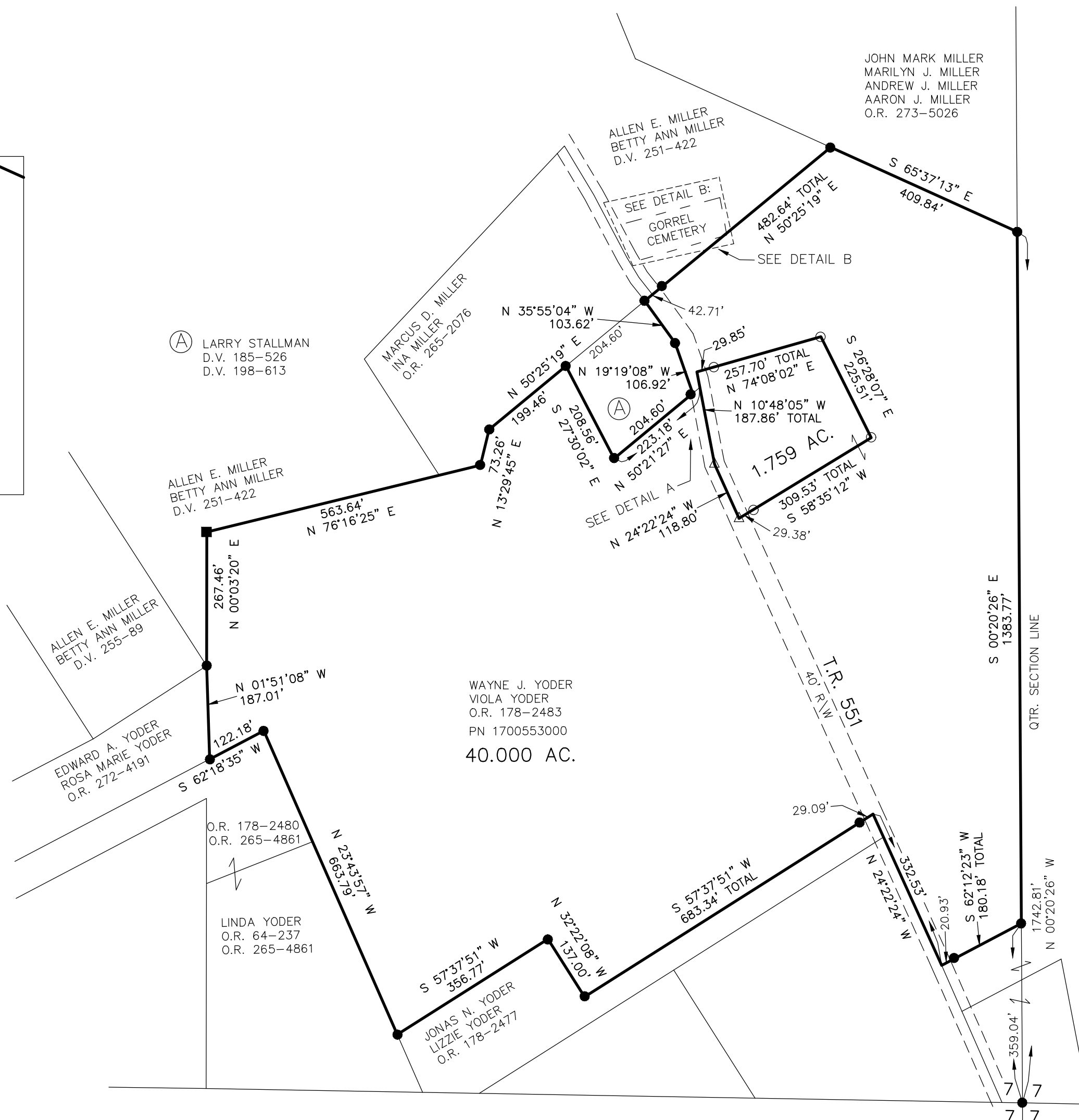
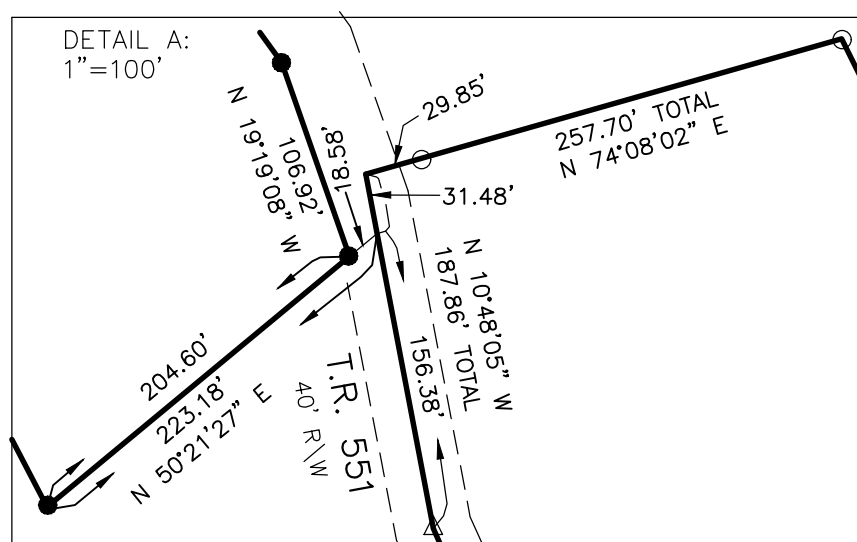
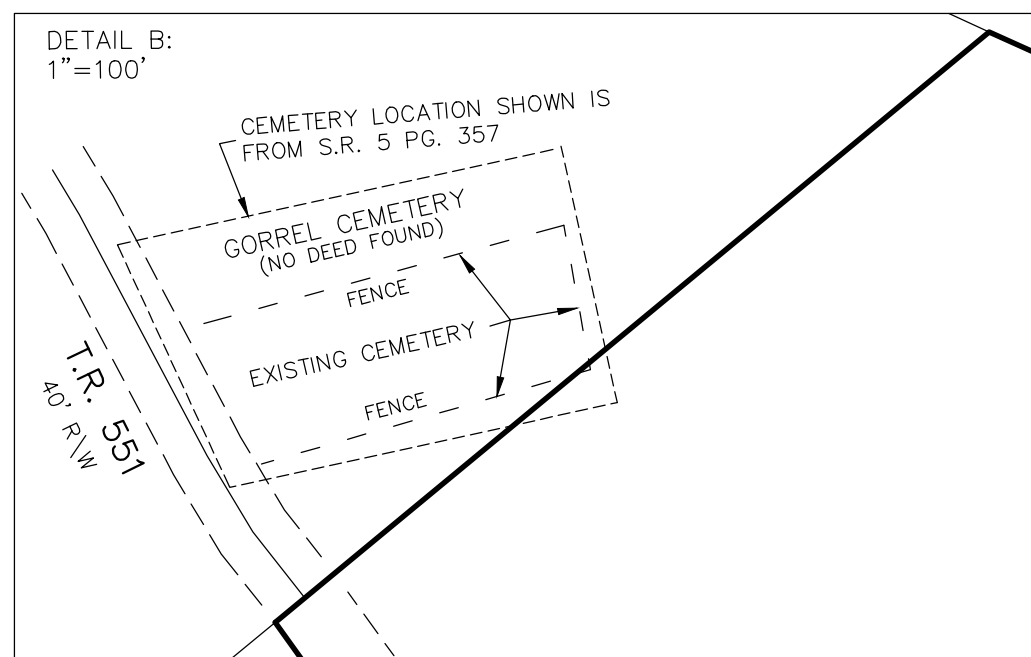
SURVEYED FOR: WAYNE YODER

MASTER PLAT

- ACTION 1) CONVEY 1.759 ACRES
- ACTION 2) CONVEY 40.000 ACRES

202200002752
B: 19 P: 4718
FILED FOR RECORD IN
HOLMES COUNTY, OH
ANITA HALL, COUNTY RECORDER
06/13/2022 11:15 AM
SMALL PLAT . 40.00
PAGES: 1

ORV 281 PG 6897
ORV 281 PG 6900



APPROVED FOR TRANSFER ONLY
NO SUBDIVISION PLAT REQUIRED
(O.R.C. 711.001 & 711.131)
Lot(s) not for building unless approved by Board of Health
HOLMES CO. PLANNING COMMISSION
By AO Date 6/1/2022



Plat Approved
Holmes County Map Office
5/5/2022 MM

I CERTIFY THIS SURVEY TO BE CORRECT TO THE BEST OF MY KNOWLEDGE.

Donald C. Baker
DONALD C. BAKER P.S. 6938
DATE: APRIL 21, 2022
KES
FILE NAME: WORK6\S-194-22



BAKER SURVEYING, LLC
138 N. CLAY STREET
MILLERSBURG, OHIO 44654
PH. 330-674-4788
EMAIL: bakersurveying@gmail.com