

LOCATION MAP

- STONE FOUND
- ✕ SPIKE FOUND
- CAPPED PIN FD. MARKED BAKER (UNLESS NOTED)

REFERENCE SURVEY:
O.R. VOL. 229; PG. 493
PLAT VOL. 19; PG. 1925
PLAT VOL. 19; PG. 2344
PLAT VOL. 19; PG. 4076

BASIS OF BEARING:
The bearings as shown hereon are relative to GRID NORTH of the OHIO STATE PLANE COORDINATE SYSTEM, NAD 83 DATUM

ENGINEER'S OR ARCHITECT'S DECLARATION: I declare that this plan shows graphically, insofar as possible, the layout and dimensions of units and of the buildings.



John A. Long
John A. Long, P.E. 67239

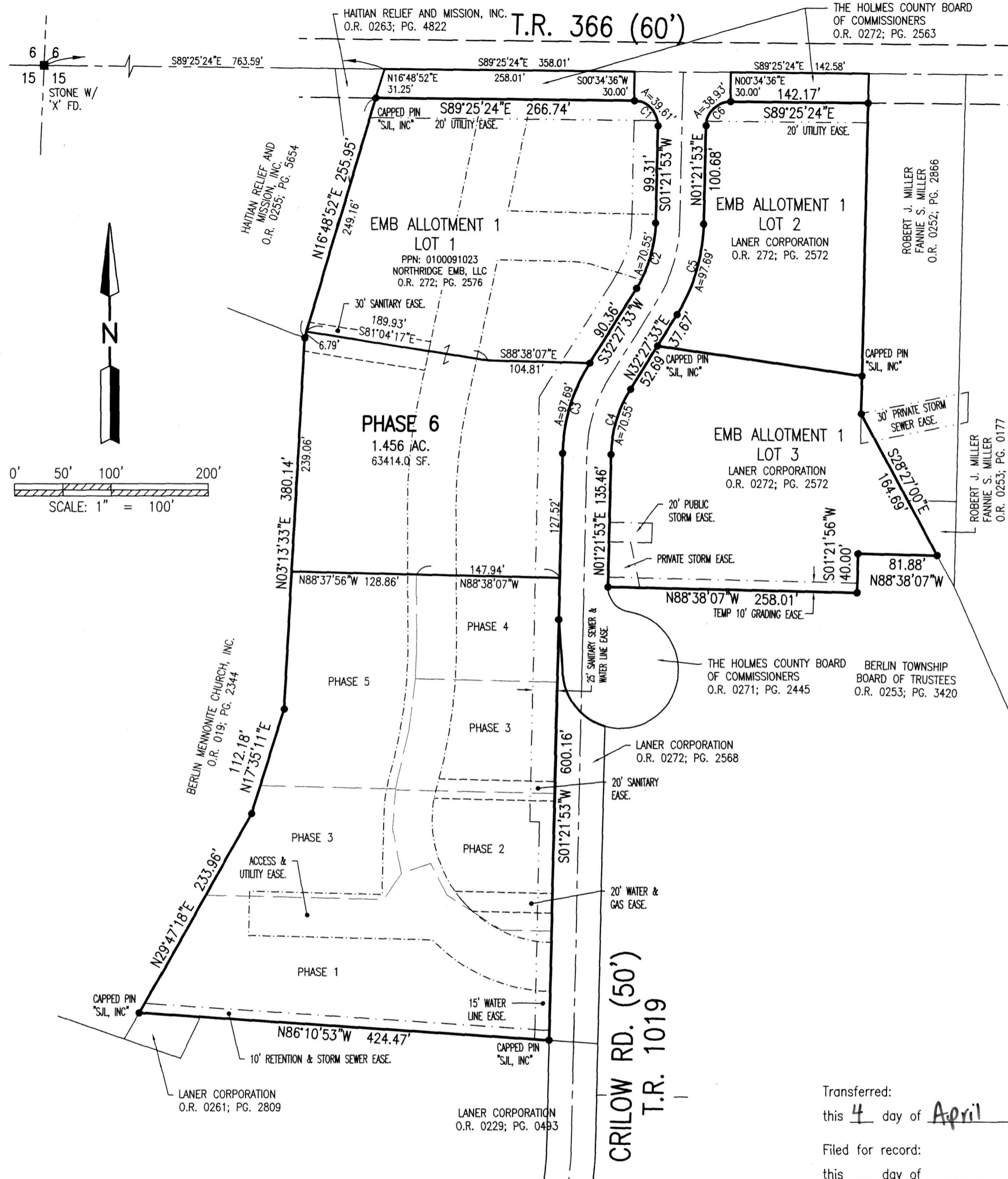
3/16/22
Date

SURVEYOR'S DECLARATION: I declare that this plan was prepared from an actual survey. That the same shows graphically, insofar as possible, the location of the boundaries, the layout, location and dimensions of units and of the buildings, the location and layout of limited common areas and facilities, the location and layout of common areas and facilities, and the location of appurtenant easements, if any.



Mark E. Purdy
Mark E. Purdy, P.S. 7307

3-16-22
Date



**NORTHRIDGE EMB
CONDOMINIUMS, PHASE 6**
PART OF LOT 1
EMB ALLOTMENT 1
PLAT VOL. 19; PG. 4076
BERLIN TOWNSHIP
N.E. QTR. SEC. 15
T-9N ; R-5W
HOLMES COUNTY, OHIO

CURVE TABLE					
NO.	ARC	RADIUS	DELTA	BEARING	CHORD
C1	39.61'	25.00'	90°47'09"	S44°01'41"E	35.60'
C2	70.55'	130.00'	31°05'40"	S16°54'43"W	69.69'
C3	97.69'	180.00'	31°05'40"	S16°54'43"W	96.49'
C4	70.55'	130.00'	31°05'40"	N16°54'43"E	69.69'
C5	97.69'	180.00'	31°05'40"	N16°54'43"E	96.49'
C6	38.93'	25.00'	89°12'43"	N45°58'10"E	35.11'

Transferred:
this 4 day of April, 2022
Filed for record:
this ___ day of _____, 20__
_____ in Volume _____, Page _____

202200001569
B: 19 P: 4665
FILED FOR RECORD IN
HOLMES COUNTY, OH
ANITA HALL, COUNTY RECORDER
04/04/2022 12:56 PM
SMALL PLAT . 40.00
PAGES: 1
ORV 281 PG 386

SHAFFER, JOHNSTON, LICHTENWALTER & ASSOCIATES, INC.
Consulting Engineers & Surveyors
3477 Commerce Parkway, Suite C
Wooster, Ohio 44691
TEL (330) 345-6377 FAX (330) 345-6725 EMAIL sjl@sjl-inc.com

DRAWN C. Falb	CHECKED	1" SCALE = 100'	DATE 03/01/22
DWG NO: EW-2419EA-COND06		JOB NO: EW-2419EA SHEET 1 OF 6	