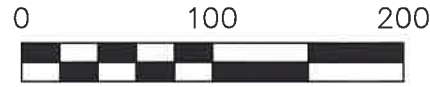


PAINT TOWNSHIP
 N.E. QTR. SECTION 35
 T-15 N; R-11 W
 HOLMES COUNTY, OHIO

SURVEYED FOR: LARRY KEIM



SCALE: 1"=100'

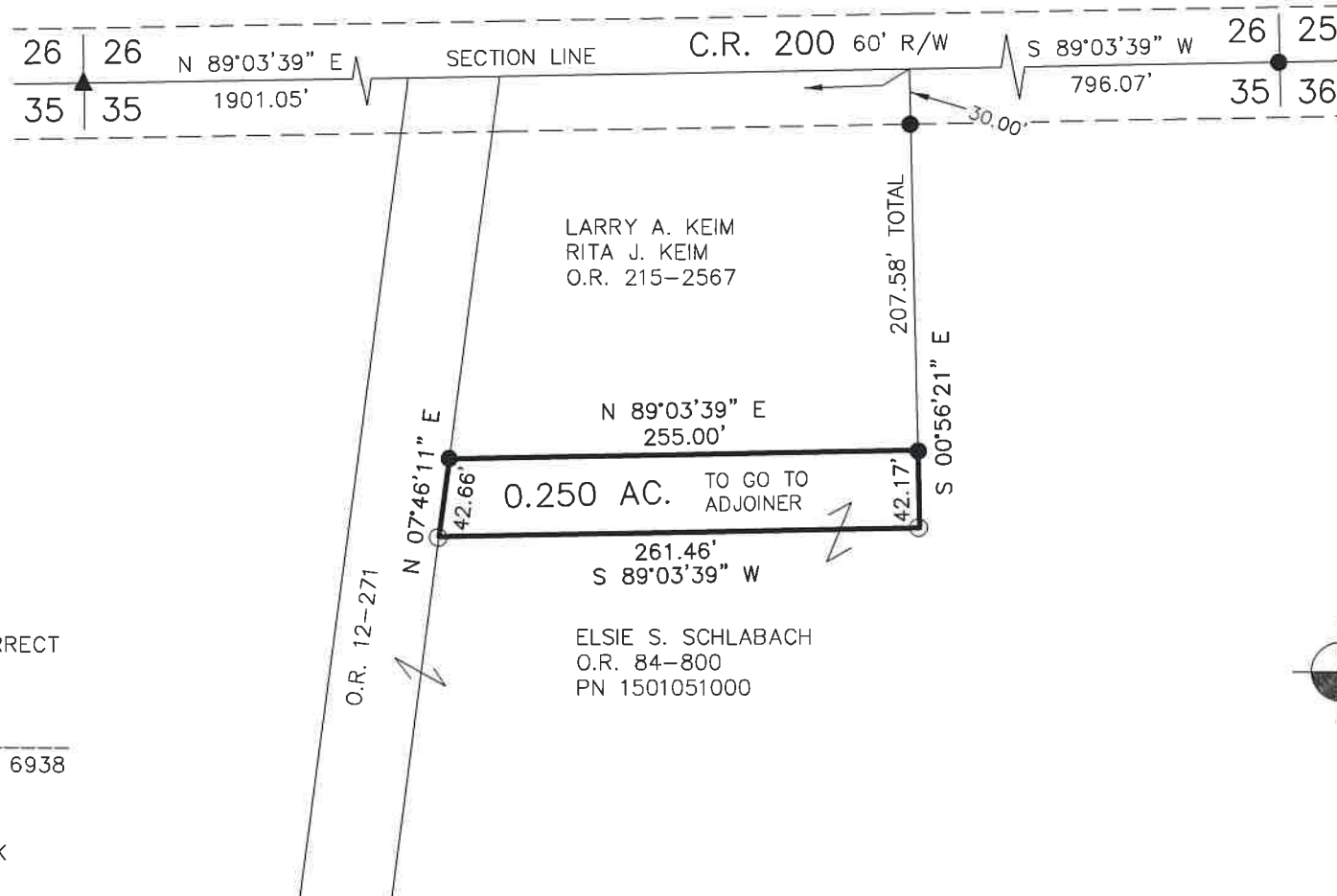
- ▲ R.R. SPIKE FOUND
- 5/8" REBAR FOUND
UNLESS OTHERWISE NOTED
- 5/8" REBAR SET WITH I.D. CAP
I.D. CAP MARKED "BAKER 6938"



APPROVED FOR TRANSFER ONLY
 NO SUBDIVISION PLAT REQUIRED
 (O.R.C. 711.001 & 711.131)
 Lot(s) not for building unless
 approved by Board of Health
 HOLMES CO. PLANNING COMMISSION
 By AO Date 1/4/2022



202200000665
 B: 19 P: 4624
 FILED FOR RECORD IN
 HOLMES COUNTY, OH
 ANITA HALL, COUNTY RECORDER
 02/11/2022 02:16 PM
 SMALL PLAT . 40.00
 PAGES: 1
 ORV 280 PG 2912



Plat Approved

Holmes County Map Office

1/4/2022 BH



I CERTIFY THIS SURVEY TO BE CORRECT
 TO THE BEST OF MY KNOWLEDGE.

Donald C. Baker

DONALD C. BAKER P.S. 6938

DATE: DEC. 6, 2021

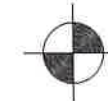
TAB

FILE NAME: WORK6\S-684-21\CNK

REFERENCES

- O.R. VOL. 12 PAGE 271
- O.R. VOL. 84 PAGE 800
- O.R. VOL. 215 PAGE 2567
- PLAT VOL. 14 PAGE 388
- PLAT VOL. 16 PAGE 783
- PLAT VOL. 16 PAGE 599

BASIS OF BEARINGS FROM
 OHIO STATE PLANE COORDINATE
 SYSTEM, NORTH ZONE, N.A.D. 83



BAKER SURVEYING, LLC
 138 N. CLAY STREET
 MILLERSBURG, OHIO 44654
 PH. 330-674-4788
 EMAIL: bakersurveying@gmail.com