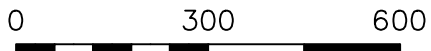


WALNUT CREEK TOWNSHIP
 S.W. QTR. SECTION 20
 N.W. QTR. SECTION 21
 N.E. QTR. SECTION 22
 T-9 N; R-5 W
 HOLMES COUNTY, OHIO

SURVEYED FOR: IVAN MILLER



SCALE: 1"=300'

- STONE FOUND
- 5/8" REBAR FOUND UNLESS OTHERWISE NOTED
- 5/8" REBAR SET WITH I.D. CAP I.D. CAP MARKED "BAKER 6938"

MASTER PLAT

ACTION 1) CONVEY 88.129 ACRES AND 12.206 ACRES

20220000412
 B: 19 P: 4610
 FILED FOR RECORD IN
 HOLMES COUNTY, OH
 ANITA HALL, COUNTY RECORDER
 01/26/2022 03:52 PM
 SMALL PLAT . 40.00
 PAGES: 1
 CRV 280 PG 1593

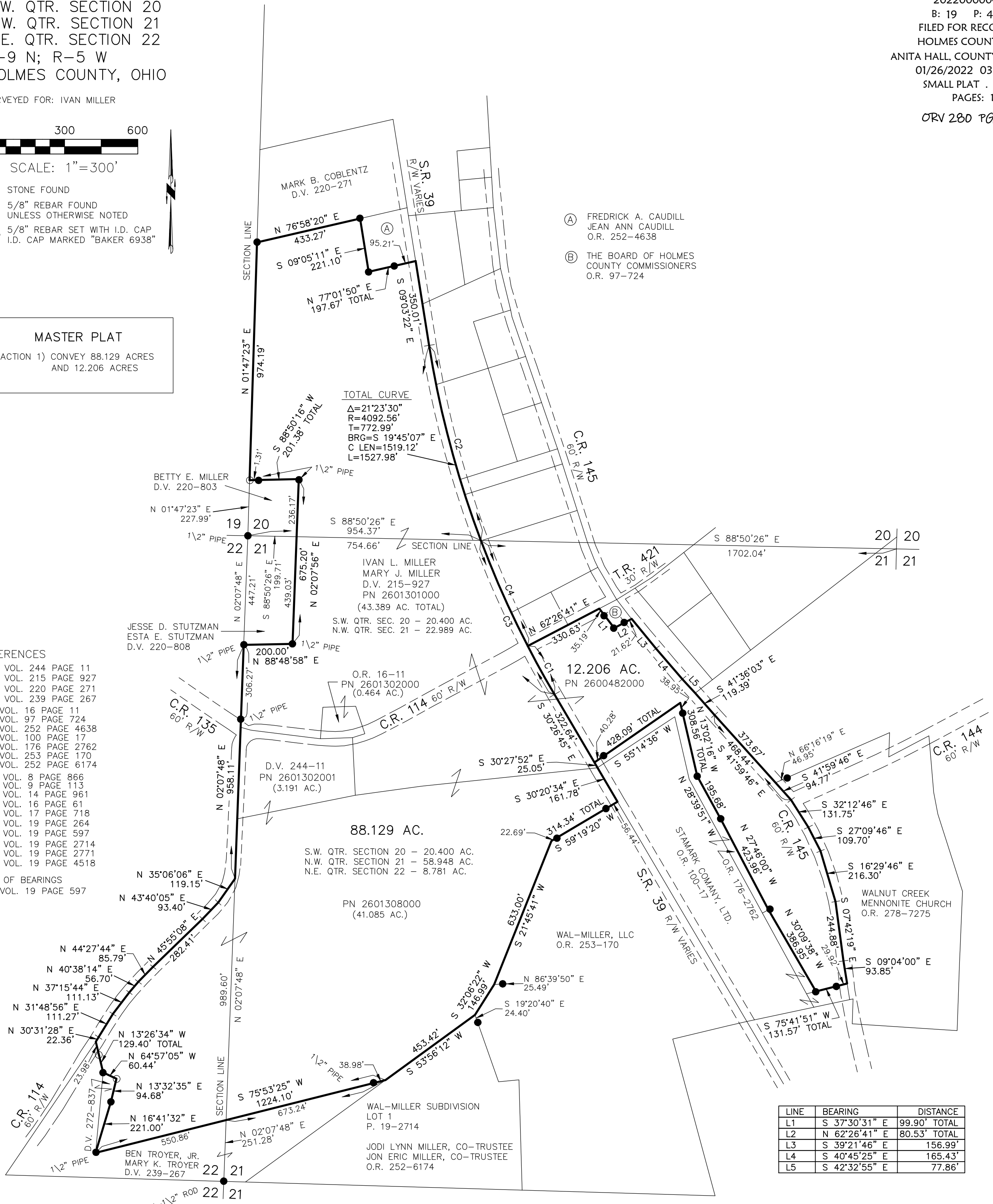
- (A) FREDRICK A. CAUDILL
 JEAN ANN CAUDILL
 O.R. 252-4638
- (B) THE BOARD OF HOLMES
 COUNTY COMMISSIONERS
 O.R. 97-724

REFERENCES

- DEED VOL. 244 PAGE 11
- DEED VOL. 215 PAGE 927
- DEED VOL. 220 PAGE 271
- DEED VOL. 239 PAGE 267
- O.R. VOL. 16 PAGE 11
- O.R. VOL. 97 PAGE 724
- O.R. VOL. 252 PAGE 4638
- O.R. VOL. 100 PAGE 17
- O.R. VOL. 176 PAGE 2762
- O.R. VOL. 253 PAGE 170
- O.R. VOL. 252 PAGE 6174

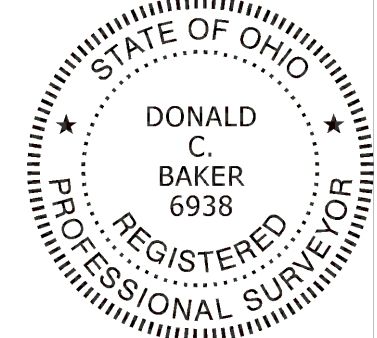
- PLAT VOL. 8 PAGE 866
- PLAT VOL. 9 PAGE 113
- PLAT VOL. 14 PAGE 961
- PLAT VOL. 16 PAGE 61
- PLAT VOL. 17 PAGE 718
- PLAT VOL. 19 PAGE 264
- PLAT VOL. 19 PAGE 597
- PLAT VOL. 19 PAGE 2714
- PLAT VOL. 19 PAGE 2771
- PLAT VOL. 19 PAGE 4518

BASIS OF BEARINGS
 PLAT VOL. 19 PAGE 597



LINE	BEARING	DISTANCE
L1	S 37°30'31" E	99.90' TOTAL
L2	N 62°26'41" E	80.53' TOTAL
L3	S 39°21'46" E	156.99'
L4	S 40°45'25" E	165.43'
L5	S 42°32'55" E	77.86'

CURVE	DELTA ANGLE	RADIUS	TANGENT	CHORD BEARING	CHORD LENGTH	ARC LENGTH
C1	03°10'37"	4092.56'	113.49'	S 28°51'33" E	226.90'	226.92'
C2	11°35'31"	4092.56'	415.42'	S 14°51'08" E	826.59'	828.00'
C3	09°47'59"	4092.56'	350.84'	S 25°32'53" E	699.13'	699.98'
C4	06°37'22"	4092.56'	236.79'	S 23°57'34" E	472.79'	473.05'



BAKER SURVEYING, LLC
 138 N. CLAY STREET
 MILLERSBURG, OHIO 44654
 PH. 330-674-4788
 EMAIL: bakersurveying@gmail.com

APPROVED FOR TRANSFER ONLY
 NO SUBDIVISION PLAT REQUIRED
 (O.R.C. 711.001 & 711.131)
 Lot(s) not for building unless
 approved by Board of Health
 HOLMES CO. PLANNING COMMISSION
 By AO Date 1/18/2022

Plat Approved
 Holmes County Map Office
 1/13/2022 Rg

I CERTIFY THIS SURVEY TO BE CORRECT TO THE BEST OF MY KNOWLEDGE.
 DONALD C. BAKER P.S. 6938
 DATE: DEC. 8, 2021
 TAB\FDB\GRB
 FILE NAME: WORK6\S-619-21\CNK