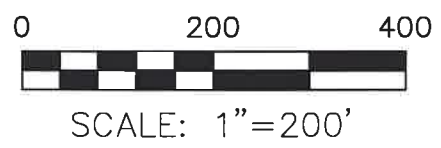


ORV 279 PG 6826  
 ORV 279 PG 6839

APPROVED FOR TRANSFER ONLY  
 NO SUBDIVISION PLAT REQUIRED  
 (O.R.C. 711.001 & 711.131)  
 Lot(s) not for building unless  
 approved by Board of Health  
 HOLMES CO. PLANNING COMMISSION  
 By AO Date 11/22/2021

**Plat Approved**  
 Holmes County Map Office  
11/19/2021 Rg

**BAKER SURVEYING, LLC**  
 138 N. CLAY STREET  
 MILLERSBURG, OHIO 44654  
 PH. 330-674-4788  
 EMAIL: bakersurveying@gmail.com



- 5/8" REBAR FOUND  
UNLESS OTHERWISE NOTED
- 5/8" REBAR SET WITH I.D. CAP  
I.D. CAP MARKED "BAKER 6938"

WALNUT CREEK TOWNSHIP  
 N.W. QTR. SECTION 15  
 T-9 N; R-4 W  
 HOLMES COUNTY, OHIO

SURVEYED FOR: WALLACE DETWEILER

**MASTER PLAT**

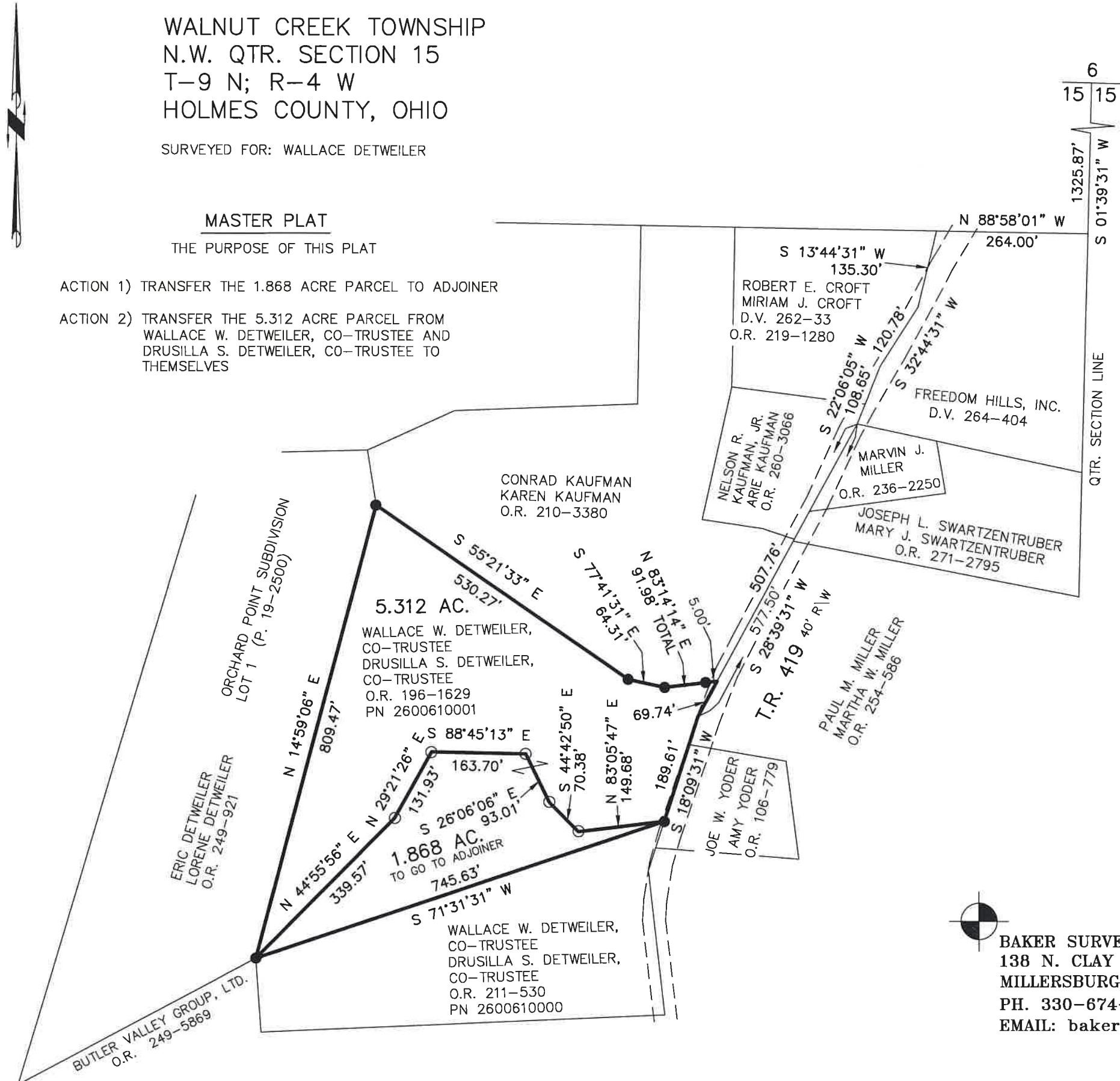
THE PURPOSE OF THIS PLAT

- ACTION 1) TRANSFER THE 1.868 ACRE PARCEL TO ADJOINER
- ACTION 2) TRANSFER THE 5.312 ACRE PARCEL FROM  
WALLACE W. DETWEILER, CO-TRUSTEE AND  
DRUSILLA S. DETWEILER, CO-TRUSTEE TO  
THEMSELVES

REFERENCES

- O.R. VOL. 196 PAGE 1629
- O.R. VOL. 211 PAGE 530
- PLAT VOL. 14 PAGE 337
- PLAT VOL. 12 PAGE 83
- PLAT VOL. 14 PAGE 192
- PLAT VOL. 19 PAGE 2540
- PLAT VOL. 19 PAGE 2500
- PLAT VOL. 19 PAGE 1519
- PLAT VOL. 19 PAGE 3223
- PLAT VOL. 19 PAGE 237

BASIS OF BEARINGS FROM  
 OHIO STATE PLANE COORDINATE  
 SYSTEM, NORTH ZONE, N.A.D. 83



I CERTIFY THIS SURVEY TO BE CORRECT  
 TO THE BEST OF MY KNOWLEDGE.

*Donald C. Baker*

DONALD C. BAKER P.S. 6938  
 DATE: OCT. 1, 2021  
 TAB\GRB  
 FILE NAME: WORK6\S-522-21