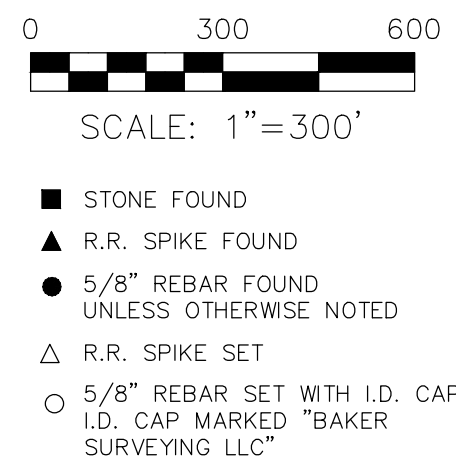


WASHINGTON TOWNSHIP  
 S.E. & S.W. QTRS. SECTION 28  
 S.E. & S.W. QTRS. SECTION 29  
 N.E. & N.W. QTRS. SECTION 32  
 T-20 N; R-15 W  
 HOLMES COUNTY, OHIO

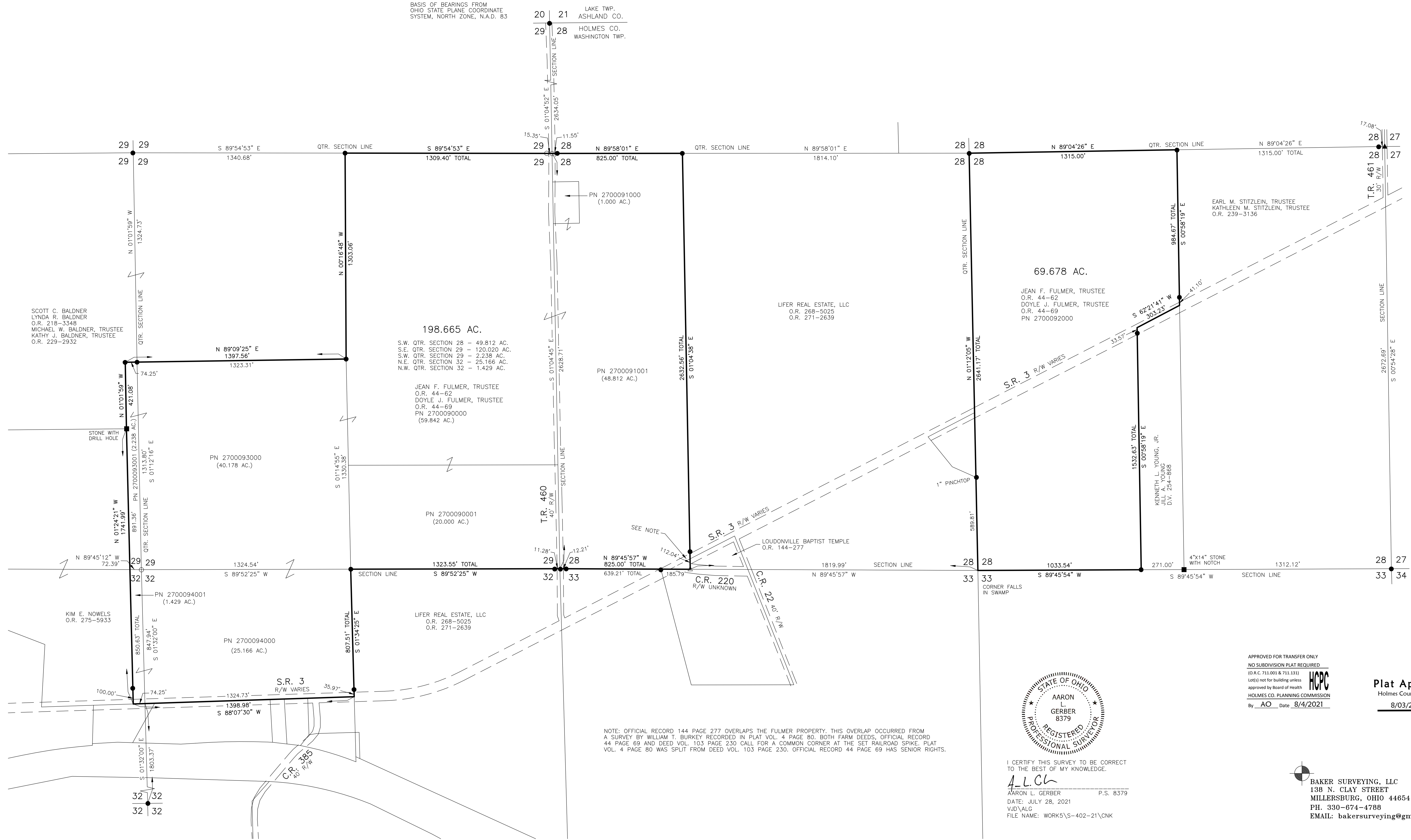
SURVEYED FOR: JEAN & DOYLE FULMER, TRUSTEES



REFERENCES  
 DEED VOL. 254 PAGE 868  
 O.R. VOL. 239 PAGE 3136  
 O.R. VOL. 44 PAGE 69  
 O.R. VOL. 271 PAGE 2639  
 O.R. VOL. 144 PAGE 277  
 O.R. VOL. 275 PAGE 5933  
 O.R. VOL. 229 PAGE 2932  
 O.R. VOL. 275 PAGE 1831  
 PLAT VOL. 2 PAGE 528  
 PLAT VOL. 2 PAGE 511  
 PLAT VOL. 4 PAGE 80  
 PLAT VOL. 12 PAGE 889  
 PLAT VOL. 19 PAGE 1855  
 PLAT VOL. 19 PAGE 4057

BASIS OF BEARINGS FROM  
 OHIO STATE PLANE COORDINATE  
 SYSTEM, NORTH ZONE, N.A.D. 83

202100016871  
 B: 19 P: 4470  
 FILED FOR RECORD IN  
 HOLMES COUNTY, OH  
 ANITA HALL, COUNTY RECORDER  
 08/09/2021 03:22 PM  
 PLAT MED. 43.20  
 PAGES: 1  
 ORV 278 PG 1103  
 ORV 278 PG 1108  
 ORV 278 PG 1113  
 ORV 278 PG 1117



NOTE: OFFICIAL RECORD 144 PAGE 277 OVERLAPS THE FULMER PROPERTY. THIS OVERLAP OCCURRED FROM A SURVEY BY WILLIAM T. BURKEY RECORDED IN PLAT VOL. 4 PAGE 80. BOTH FARM DEEDS, OFFICIAL RECORD 44 PAGE 69 AND DEED VOL. 103 PAGE 230 CALL FOR A COMMON CORNER AT THE SET RAILROAD SPIKE. PLAT VOL. 4 PAGE 80 WAS SPLIT FROM DEED VOL. 103 PAGE 230. OFFICIAL RECORD 44 PAGE 69 HAS SENIOR RIGHTS.



I CERTIFY THIS SURVEY TO BE CORRECT TO THE BEST OF MY KNOWLEDGE.  
 A.L.G.  
 AARON L. GERBER P.S. 8379  
 DATE: JULY 28, 2021  
 VJD/ALG  
 FILE NAME: WORK5\S-402-21\CNK

APPROVED FOR TRANSFER ONLY  
 NO SUBDIVISION PLAT REQUIRED  
 (O.A.C. 711.001 & 711.131)  
 Not for building unless  
 approved by Board of Health  
 HOLMES CO. PLANNING COMMISSION  
 By AO Date 8/4/2021

Plat Approved  
 Holmes County Map Office  
 8/03/2021 Rg

BAKER SURVEYING, LLC  
 138 N. CLAY STREET  
 MILLERSBURG, OHIO 44654  
 PH. 330-674-4788  
 EMAIL: bakersurveying@gmail.com