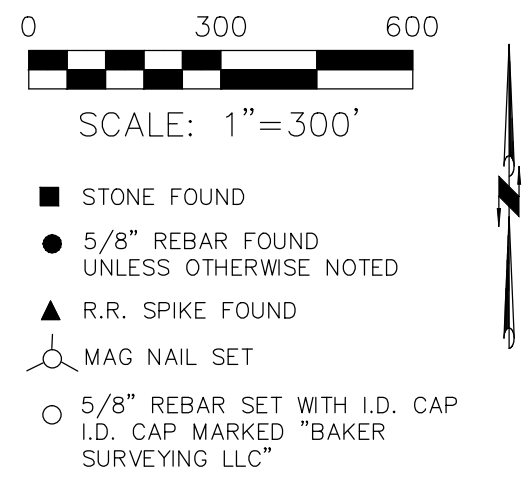


RICHLAND TOWNSHIP
N.E., N.W., & S.E. QTR. SECTION 21
T-8 N; R-9 W
HOLMES COUNTY, OHIO

SURVEYED FOR: KAUFMAN REALTY



REFERENCES

- DEED VOL. 239 PAGE 58
- O.R. VOL. 178 PAGE 1567
- O.R. VOL. 178 PAGE 1569
- O.R. VOL. 178 PAGE 1571
- O.R. VOL. 272 PAGE 5562
- O.R. VOL. 225 PAGE 1114
- O.R. VOL. 206 PAGE 77
- O.R. VOL. 84 PAGE 449
- PLAT VOL. 15 PAGE 59
- PLAT VOL. 19 PAGE 4104
- PLAT VOL. 19 PAGE 2725

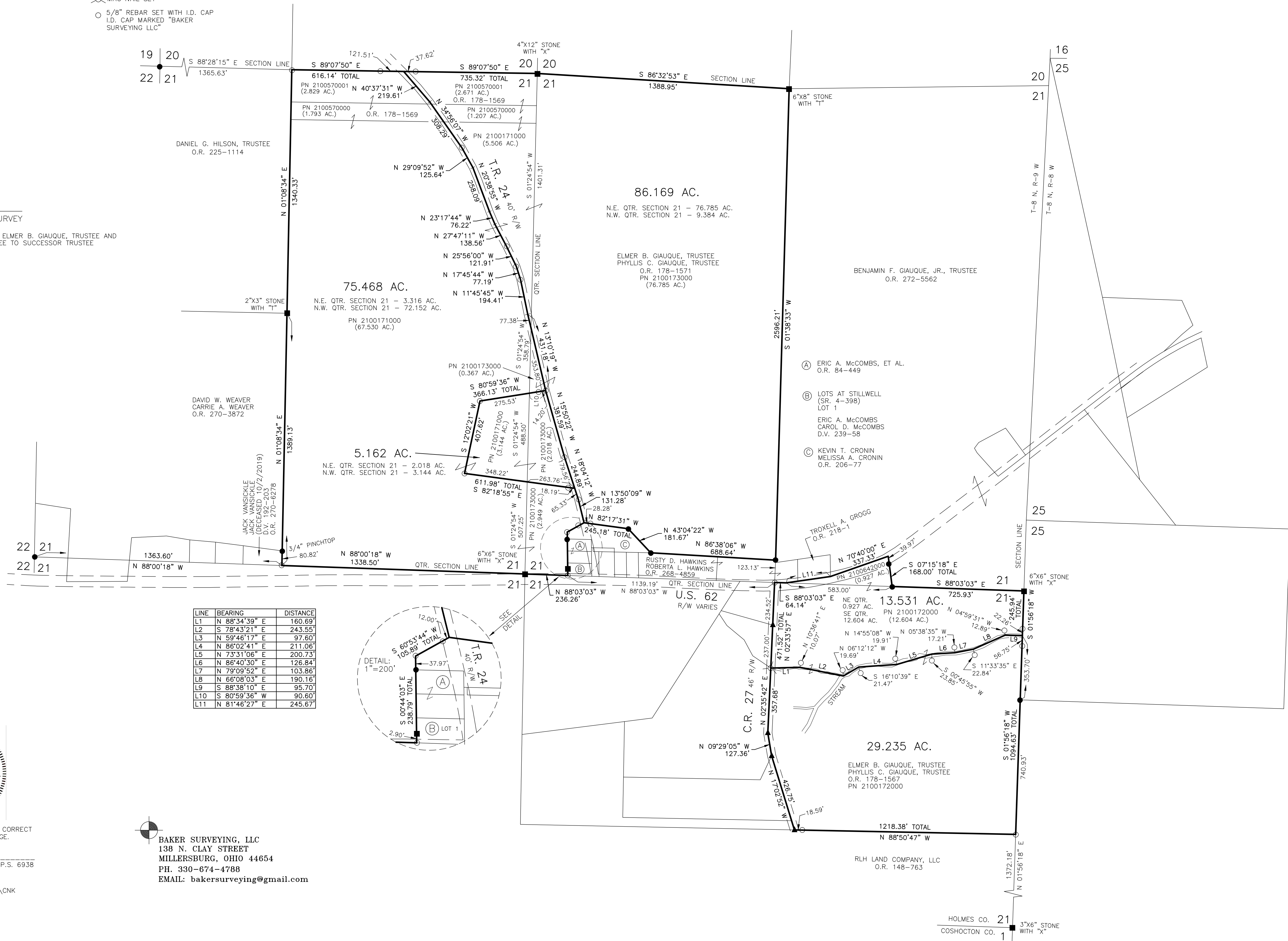
BASIS OF BEARINGS FROM
OHIO STATE PLANE COORDINATE
SYSTEM, NORTH ZONE, N.A.D. 83

MASTER PLAT

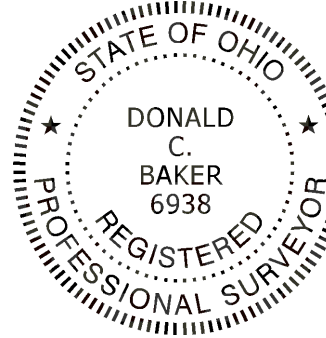
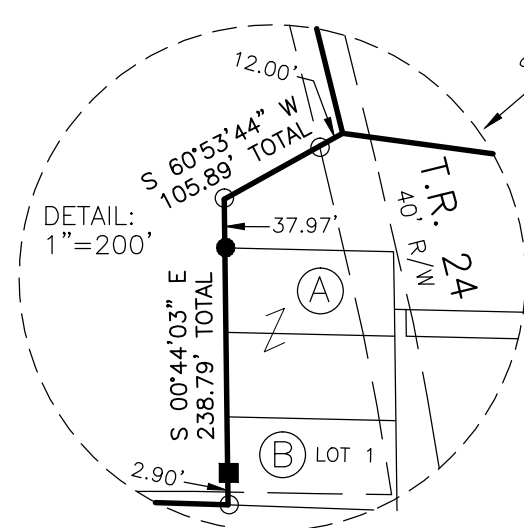
THE PURPOSE OF THIS SURVEY

ACTION 1) CONVEY ALL PARCELS FROM ELMER B. GIAUQUE, TRUSTEE AND
PHYLLIS C. GIAUQUE, TRUSTEE TO SUCCESSOR TRUSTEE

20210016868
B: 19 P: 4469
FILED FOR RECORD IN
HOLMES COUNTY, OH
ANITA HALL, COUNTY RECORDER
08/09/2021 02:20 PM
PLAT MED. 43.20
PAGES: 1
CRV 278 PG 1085



LINE	BEARING	DISTANCE
L1	N 88°34'39" E	160.69'
L2	S 78°43'21" E	243.55'
L3	N 59°46'17" E	97.60'
L4	N 86°02'41" E	211.06'
L5	N 73°31'06" E	200.73'
L6	N 86°40'30" E	126.84'
L7	N 79°09'52" E	103.86'
L8	N 66°08'03" E	190.16'
L9	S 88°38'10" E	95.70'
L10	S 80°59'36" W	90.60'
L11	N 81°46'27" E	245.67'



I CERTIFY THIS SURVEY TO BE CORRECT
TO THE BEST OF MY KNOWLEDGE.
Donald C. Baker
DONALD C. BAKER P.S. 6938
DATE: JULY 1, 2021
KES\VJD
FILE NAME: WORK5\S-142-21\CNK

BAKER SURVEYING, LLC
138 N. CLAY STREET
MILLERSBURG, OHIO 44654
PH. 330-674-4788
EMAIL: bakersurveying@gmail.com

APPROVED FOR TRANSFER ONLY
NO SUBDIVISION PLAT REQUIRED
(O.R.C. 711.001 & 711.131)
Lot(s) not for building unless
approved by Board of Health
HOLMES CO. PLANNING COMMISSION
By *AO* Date *7/30/2021*

Plat Approved
Holmes County Map Office
7/29/2021 Rg

HOLMES CO. 21
COSHOCK CO. 1