

REFERENCES:

Deeds as shown

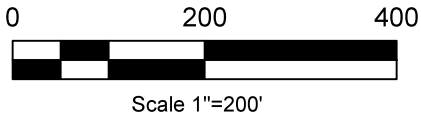
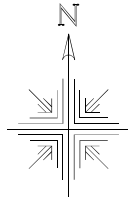
- Plat Vol. 12 Page 478
- Plat Vol. 10 Page 256
- Plat Vol. 19 Page 3737
- Plat Vol. 19 Page 3909
- Plat Vol. 19 Page 3075
- Plat Vol. 18 Page 759

Basis of Bearing Grid North, Ohio State Plane
Coordinate System, North Zone, NAD 83

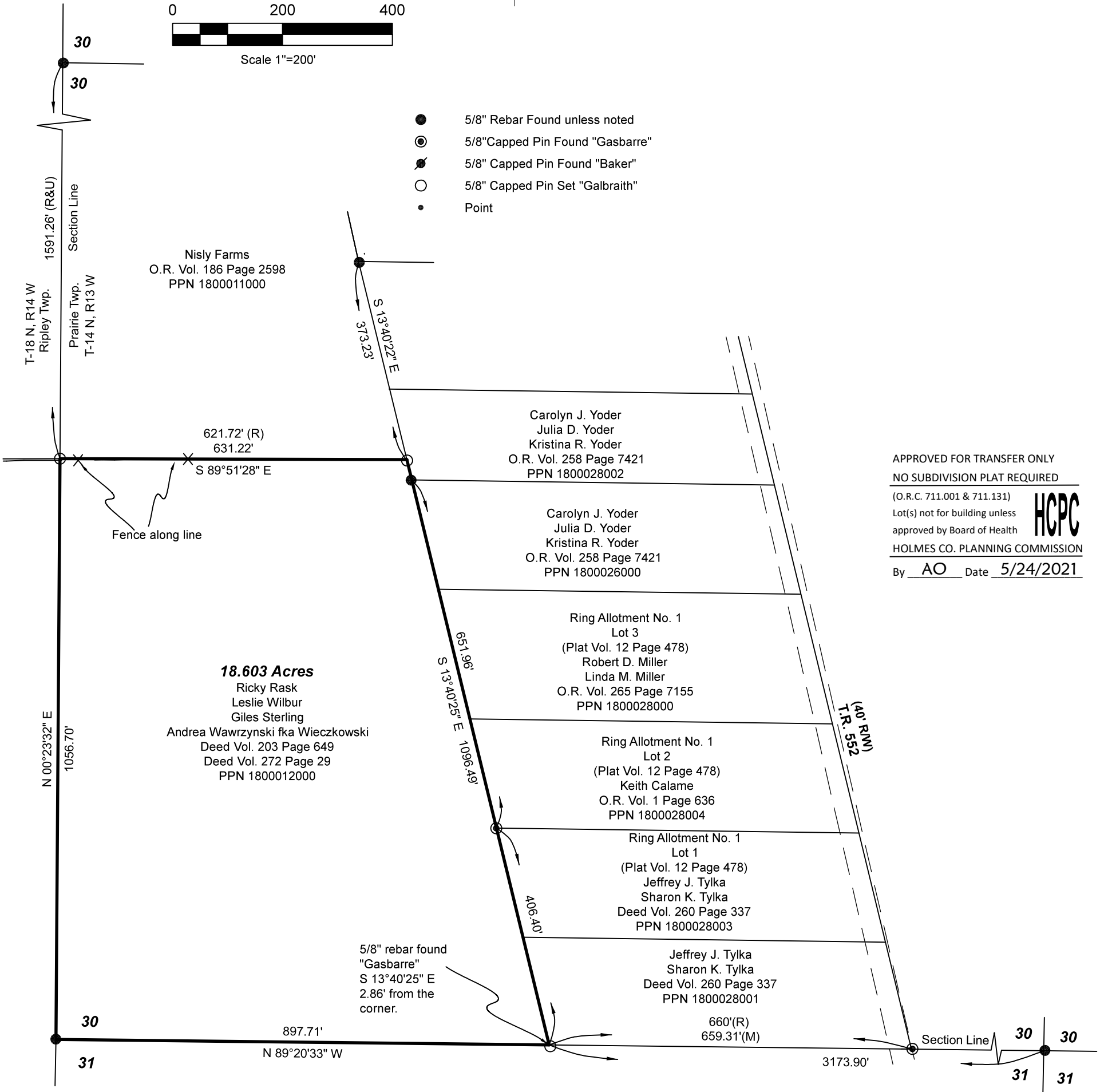
Prairie Township
S.W. Qtr. Sec. 30
T-14 N, R-13 W
Holmes County, Ohio

PREPARED FOR: Ricky Rask

202100016196
B: 19 P: 4438
FILED FOR RECORD IN
HOLMES COUNTY, OH
ANITA HALL, COUNTY RECORDER
07/01/2021 08:17 AM
SMALL PLAT . 40.00
PAGES: 1
ORV 277 PG 5010



- 5/8" Rebar Found unless noted
- ⊙ 5/8" Capped Pin Found "Gasbarre"
- ⊙ 5/8" Capped Pin Found "Baker"
- 5/8" Capped Pin Set "Galbraith"
- Point



APPROVED FOR TRANSFER ONLY
NO SUBDIVISION PLAT REQUIRED
(O.R.C. 711.001 & 711.131)
Lot(s) not for building unless approved by Board of Health
HOLMES CO. PLANNING COMMISSION
By AO Date 5/24/2021



Plat Approved
Holmes County Map Office
5/20/2021 TD

Pioneer Surveying & Services, LLC.
5434 Township Road 377
Millersburg, Ohio 44654
Phone: 330-231-0497
Email: caleb@pioneersurveyingandservices.com



I certify this survey to be correct to the best of my knowledge.

Caleb Galbraith
Date: March 24, 2021
Job ID: 3921-H29