

EASEMENT EXHIBIT

VILLAGE OF LOUDONVILLE

WASHINGTON TOWNSHIP
T-19N ; R-15W
N.W. QTR. SEC 6
HOLMES COUNTY, OHIO

Holmes County Planning Commission

Viewed only for the internal use of county departments. Stamp shall not be considered an endorsement of compliance with county subdivision regulations. AO 6/10/2021

PPN: 2900029000
NORTHWEST HARDWOODS, INC.
O.R. 0275; PG. 6882

Plat Approved

Holmes County Map Office

6/10/2021 Rg

202100015816

B: 19 P: 4419

FILED FOR RECORD IN
HOLMES COUNTY, OH

ANITA HALL, COUNTY RECORDER

06/11/2021 10:51 AM

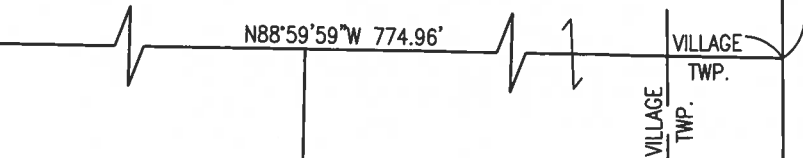
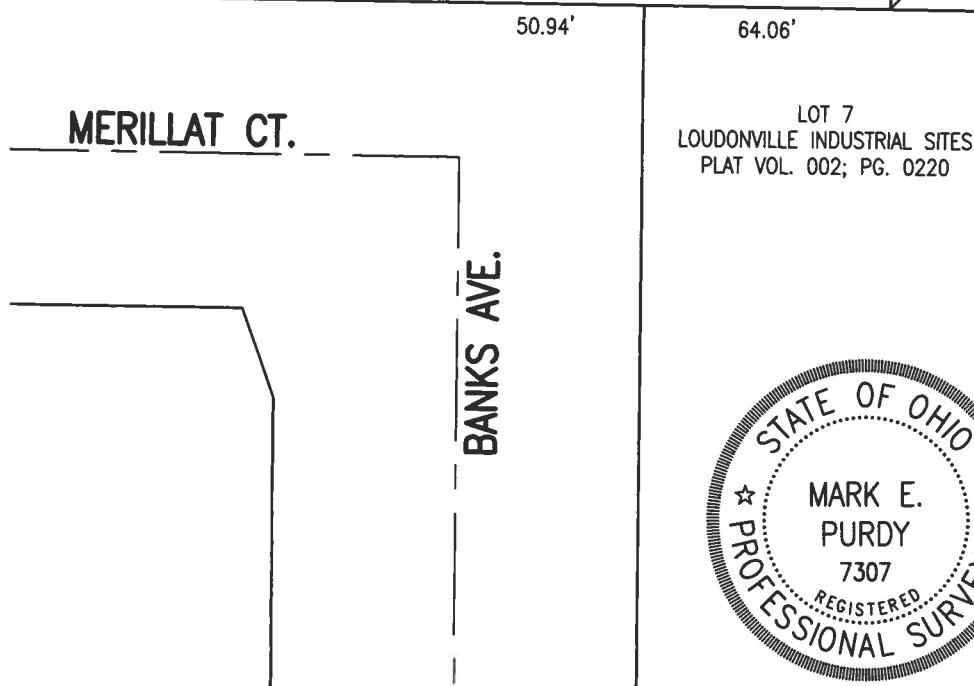
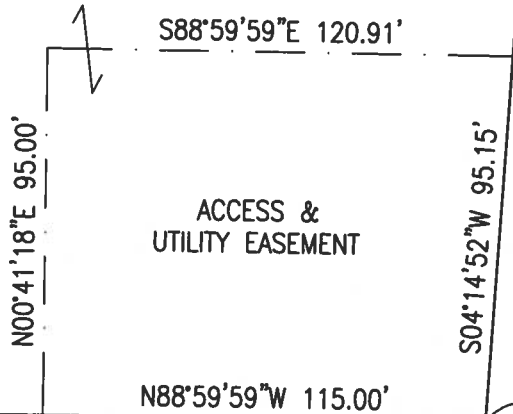
SMALL PLAT . 40.00

PAGES: 1

OR 277 PG 2921



P.V. COMMUNICATIONS, INC.
O.R. 0263; PG. 4251



31 31

6 6

VILLAGE TWP.

500°20'09\"/>

DEER RUN RD. 60' R/W ~ (A.K.A. T.R. 457)

Distances shown hereon are expressed in feet and decimal parts thereof, bearings are used to express angles only, iron pins or monuments were found or set as indicated hereon. All of which I believe to be correct to the best of my knowledge.

By: Mark E. Purdy Mark E. Purdy, P.S. #7307 Date 6-3-21



SHAFER, JOHNSTON, LICHTENWALTER & ASSOCIATES, INC.

Consulting Engineers & Surveyors

3477 Commerce Parkway, Suite C
Wooster, Ohio 44691

TEL (330) 345-6377 FAX (330) 345-6725 EMAIL sjl@sjl-inc.com

DRAWN C. Falb	CHECKED	1" = 50'	DATE 03/24/21
DWG NO: SW-5670A FLD	JOB NO: SW-5670A	SHEET 1 OF 1	