

202100015362  
 B: 19 P: 4395  
 FILED FOR RECORD IN  
 HOLMES COUNTY, OH  
 ANITA HALL, COUNTY RECORDER  
 05/17/2021 02:57 PM  
 SMALL PLAT . 40.00  
 PAGES: 1

ORV 277 P 496  
 ORV 277 P 500

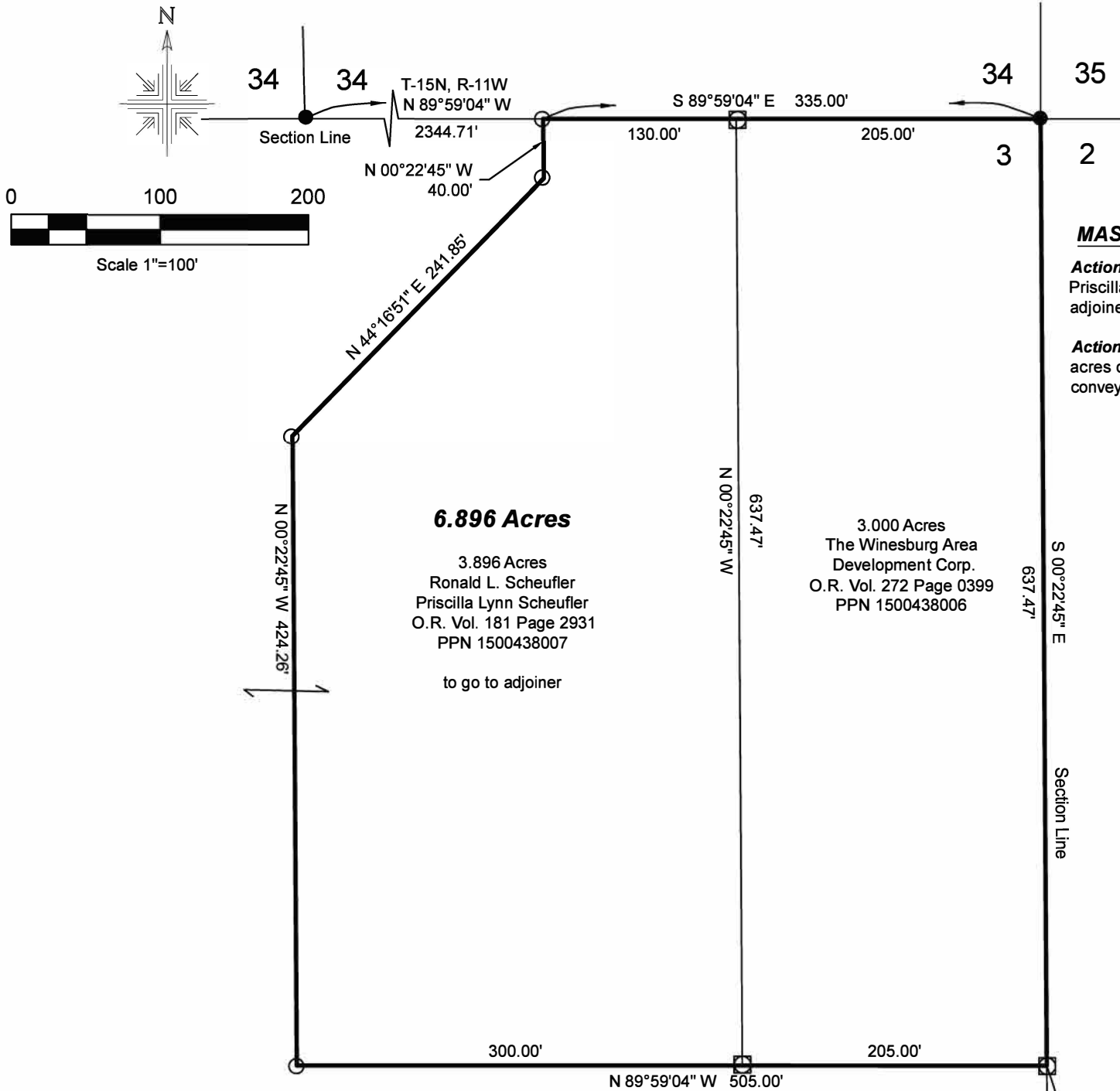
REFERENCES:

Deeds as shown  
 Plat Vol. 19 Page 1754  
 Plat Vol. 19 Page 1852  
 Plat Vol. 19 Page 3640  
 Plat Vol. 02 Page 400  
 Plat Vol. 02 Page 540  
 Plat Vol. 19 Page 4051

Paint Township  
 N.E. Qtr. Fractional Sec. 3  
 T-14 N; R-11 W  
 Holmes County, Ohio

SURVEYED FOR: Winesburg Area Development Corp.

Basis of Bearing from Grid North, Ohio State  
 Plane Coordinate System, North Zone, NAD 83.



**MASTER PLAT: The Purpose of this survey.**

**Action 1.)** Split 3.896 acres from Ronald L. Scheufler and Priscilla Lynn Scheufler (Part of PPN 150043807) to adjoiner The Winesburg Area Development Corp.  
**Action 2.)** Combine the 3.896 acres and the existing 3.000 acres of The Winesburg Area Development Corp. and convey new 6.896 acre parcel to adjoiner.

**6.896 Acres**  
 3.896 Acres  
 Ronald L. Scheufler  
 Priscilla Lynn Scheufler  
 O.R. Vol. 181 Page 2931  
 PPN 1500438007  
 to go to adjoiner

3.000 Acres  
 The Winesburg Area  
 Development Corp.  
 O.R. Vol. 272 Page 0399  
 PPN 1500438006

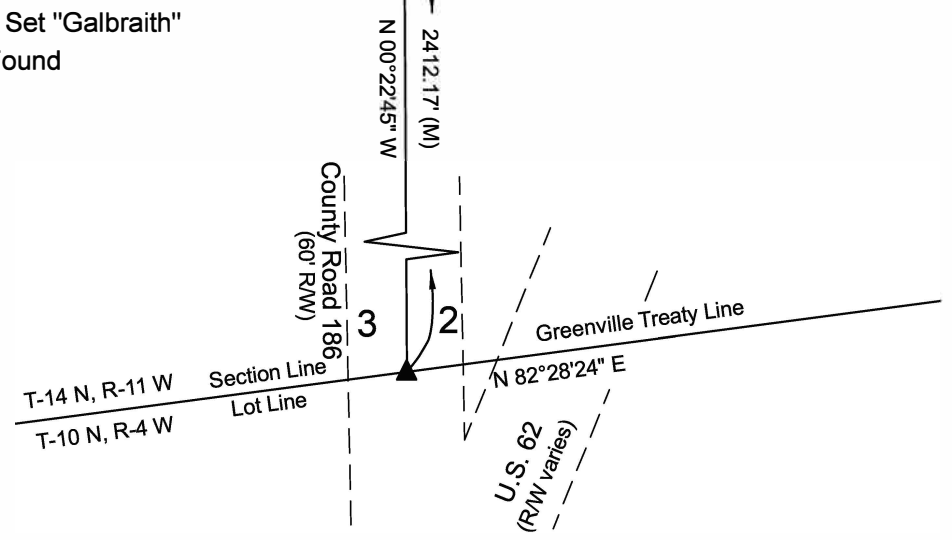


- 5/8" Rebar Found unless noted
- 5/8" Capped Pin Found "Galbraith"
- 5/8" Capped Pin Set "Galbraith"
- ▲ Railroad Spike Found
- Point

I certify this survey to be correct to the best of my knowledge.

*Caleb Galbraith*

Caleb Jerome Galbraith P.S. 8703  
 Date: Feb. 5, 2021  
 Job ID: 4221 H-27



Pioneer Surveying & Services, LLC.  
 5434 Township Road 377  
 Millersburg, Ohio 44654  
 Phone: 330-231-0497  
 Email: caleb@pioneersurveyingandservices.com



APPROVED FOR TRANSFER ONLY  
 NO SUBDIVISION PLAT REQUIRED  
 (O.R.C. 711.001 & 711.131)  
 Lot(s) not for building unless approved by Board of Health  
 HOLMES CO. PLANNING COMMISSION  
 By AO Date 5/7/2021



**Plat Approved**  
 Holmes County Map Office  
 5/7/2021 Rg