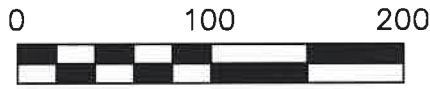


WALNUT CREEK TOWNSHIP
 N.W. QTR. SECTION 15
 T-9 N; R-4 W
 HOLMES COUNTY, OHIO

SURVEYED FOR: RAY YODER



SCALE: 1"=100'

- STONE FOUND
- 5/8" REBAR FOUND UNLESS OTHERWISE NOTED

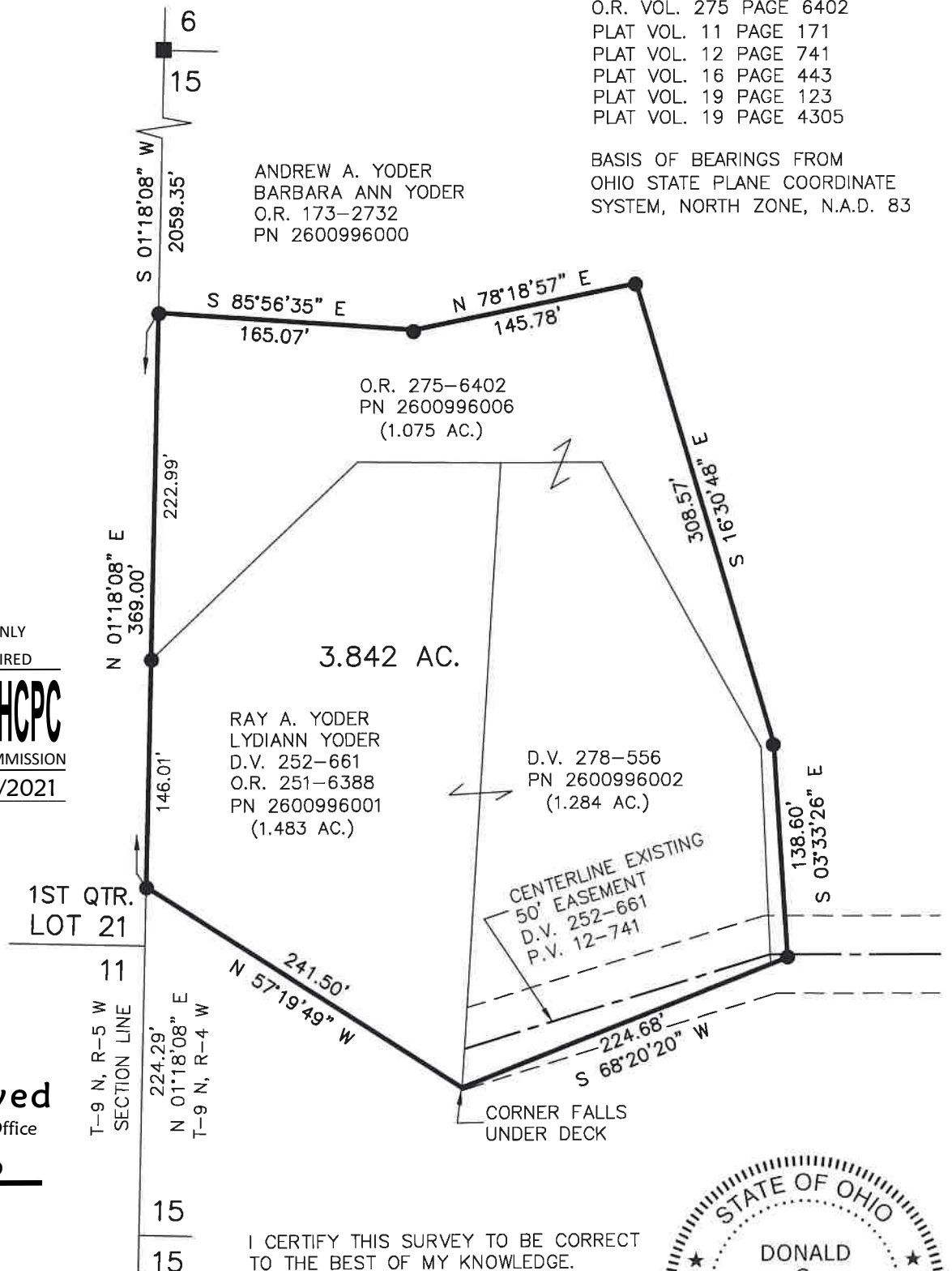
202100014310
 B: 19 P: 4339
 FILED FOR RECORD IN
 HOLMES COUNTY, OH
 ANITA HALL, COUNTY RECORDER
 03/24/2021 10:35 AM
 SMALL PLAT . 40.00
 PAGES: 1

ORV 276 PG 2544

REFERENCES

- DEED VOL. 278 PAGE 556
- O.R. VOL. 173 PAGE 2732
- O.R. VOL. 251 PAGE 6388
- O.R. VOL. 275 PAGE 6402
- PLAT VOL. 11 PAGE 171
- PLAT VOL. 12 PAGE 741
- PLAT VOL. 16 PAGE 443
- PLAT VOL. 19 PAGE 123
- PLAT VOL. 19 PAGE 4305

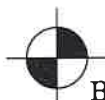
BASIS OF BEARINGS FROM
 OHIO STATE PLANE COORDINATE
 SYSTEM, NORTH ZONE, N.A.D. 83



APPROVED FOR TRANSFER ONLY
 NO SUBDIVISION PLAT REQUIRED
 (O.R.C. 711.001 & 711.131)
 Lot(s) not for building unless
 approved by Board of Health
HCPC
 HOLMES CO. PLANNING COMMISSION
 By AO Date 3/17/2021

Plat Approved
 Holmes County Map Office

3/17/2021 TD



BAKER SURVEYING, LLC
 138 N. CLAY STREET
 MILLERSBURG, OHIO 44654
 PH. 330-674-4788

EMAIL: bakersurveying@gmail.com

I CERTIFY THIS SURVEY TO BE CORRECT
 TO THE BEST OF MY KNOWLEDGE.

Donald C. Baker
 DONALD C. BAKER P.S. 6938
 DATE: MARCH 9, 2021
 KES\GRB
 FILE NAME: WORK6\S-678A-20\CNK

