

Prairie Township
S.E. Qtr. Section 9
T-13 N; R-13 W
Holmes County, Ohio

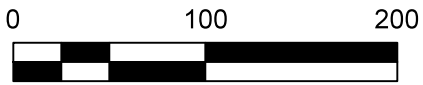
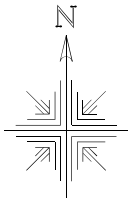
SURVEYED FOR: Jack Purdy

202100013443
B: 19 P: 4297
FILED FOR RECORD IN
HOLMES COUNTY, OH
ANITA HALL, COUNTY RECORDER
02/08/2021 01:52 PM
SMALL PLAT . 40.00
PAGES: 1
ORV 275 PG 5573

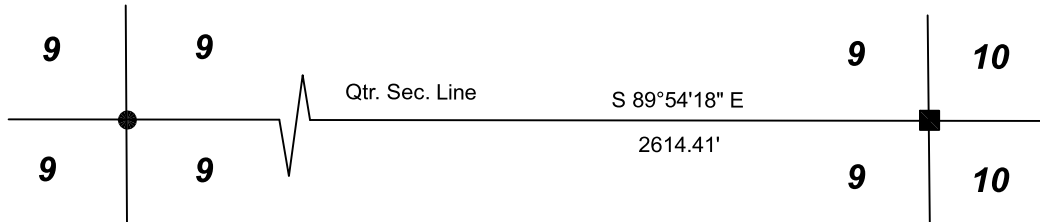
REFERENCES:
Deeds as shown

- Plat Vol 8 Page 694
- Plat Vol. 19 Page 3699
- Plat Vol. 12 Page 199
- Plat Vol. 8 Page 694
- Plat Vol. 10 Page 755

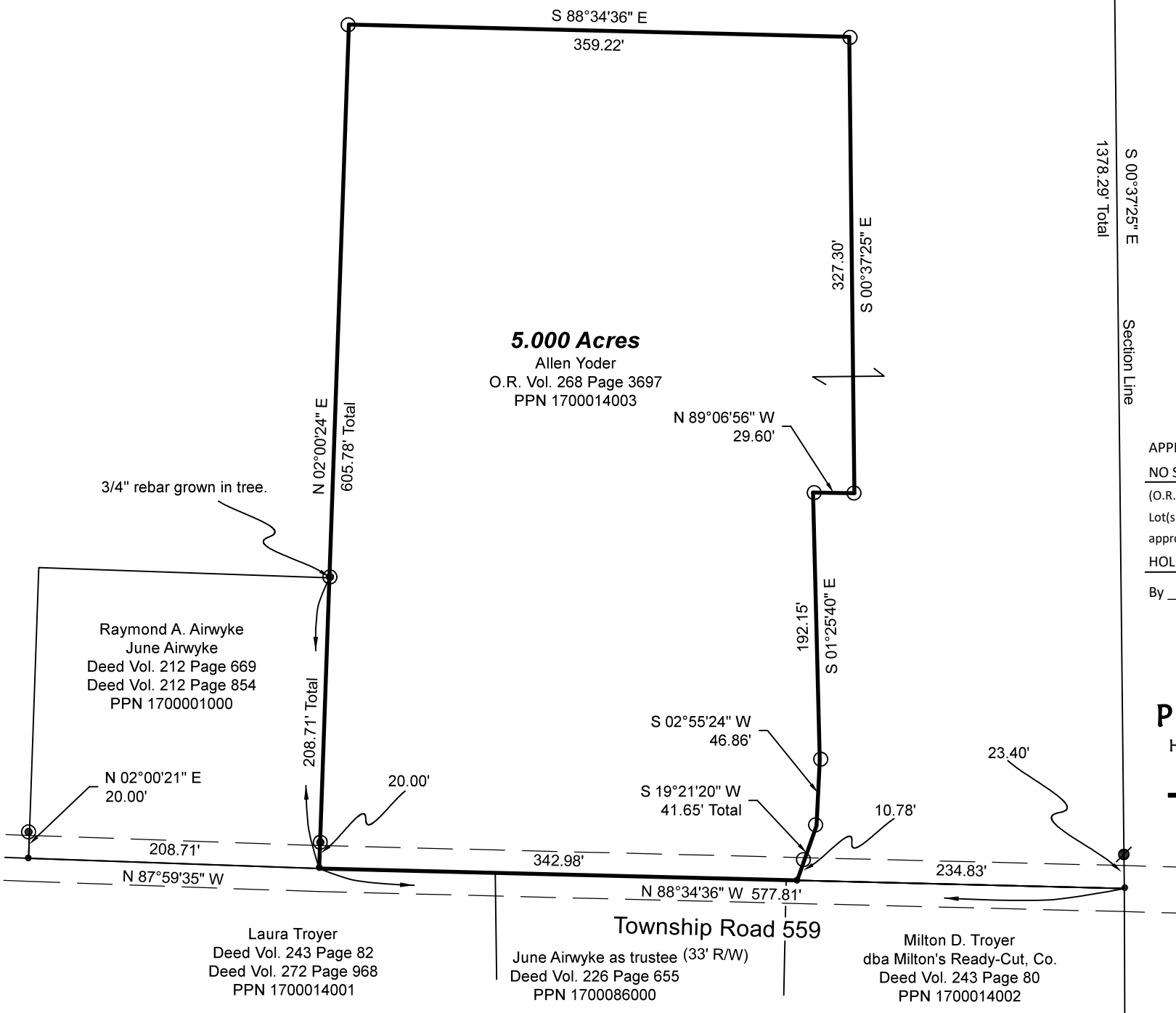
Basis of Bearing Grid North, Ohio State Plane Coordinate System, North Zone, NAD 83



Scale 1"=100'



- Stone Found
- 5/8" Rebar Found unless noted
- ⊙ 3/4" Rebar Found
- ⊙ 5/8" Capped Pin Found "Baker"
- 5/8" Capped Pin Set "Galbraith"
- Point



APPROVED FOR TRANSFER ONLY
NO SUBDIVISION PLAT REQUIRED
(O.R.C. 711.001 & 711.131)
Lot(s) not for building unless
approved by Board of Health
HOLMES CO. PLANNING COMMISSION
By TS Date 1/26/2021



Plat Approved
Holmes County Map Office
1/26/2021 TD

Pioneer Surveying & Services, LLC.
5434 Township Road 377
Millersburg, Ohio 44654
Phone: 330-231-0497
Email: caleb@pioneersurveyingandservices.com



I certify this survey to be correct to the best of my knowledge.

Caleb Jerome Galbraith P.S. 8703
Date: Dec. 2, 2020
Job ID: 20920-H29