

Mechanic Township
2nd Qtr. Lots 4,5,6, & 7
T-8 N; R-6 W
Holmes County, Ohio
SURVEYED FOR: Heartland Title Agency

REFERENCES:

Deeds as shown

Plat Vol. 16 Page 803
Plat Vol. 19 Page 3247
Plat Vol. 16 Page 828
Plat Vol. 6 Page 121
Plat Vol. 10 Page 604
Plat Vol. 10 Page 187
Plat Vol. 14 Page 419
Plat Vol. 3 Page 43B
Unrecorded survey by Donald C. Baker dated October 24, 2012

- Stone Found
- 5/8" Rebar Found unless noted
- 1/2" Pipe Found
- ⊙ 1/2" Rebar Found
- 5/8" Capped Pin Found "Baker"
- 5/8" Capped Pin Set "Galbraith"
- Point

202100013394

B: 19 P: 4293

FILED FOR RECORD IN

HOLMES COUNTY, OH

ANITA HALL, COUNTY RECORDER

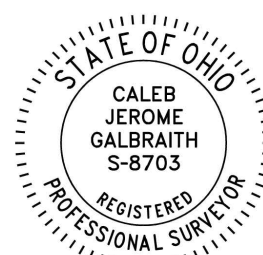
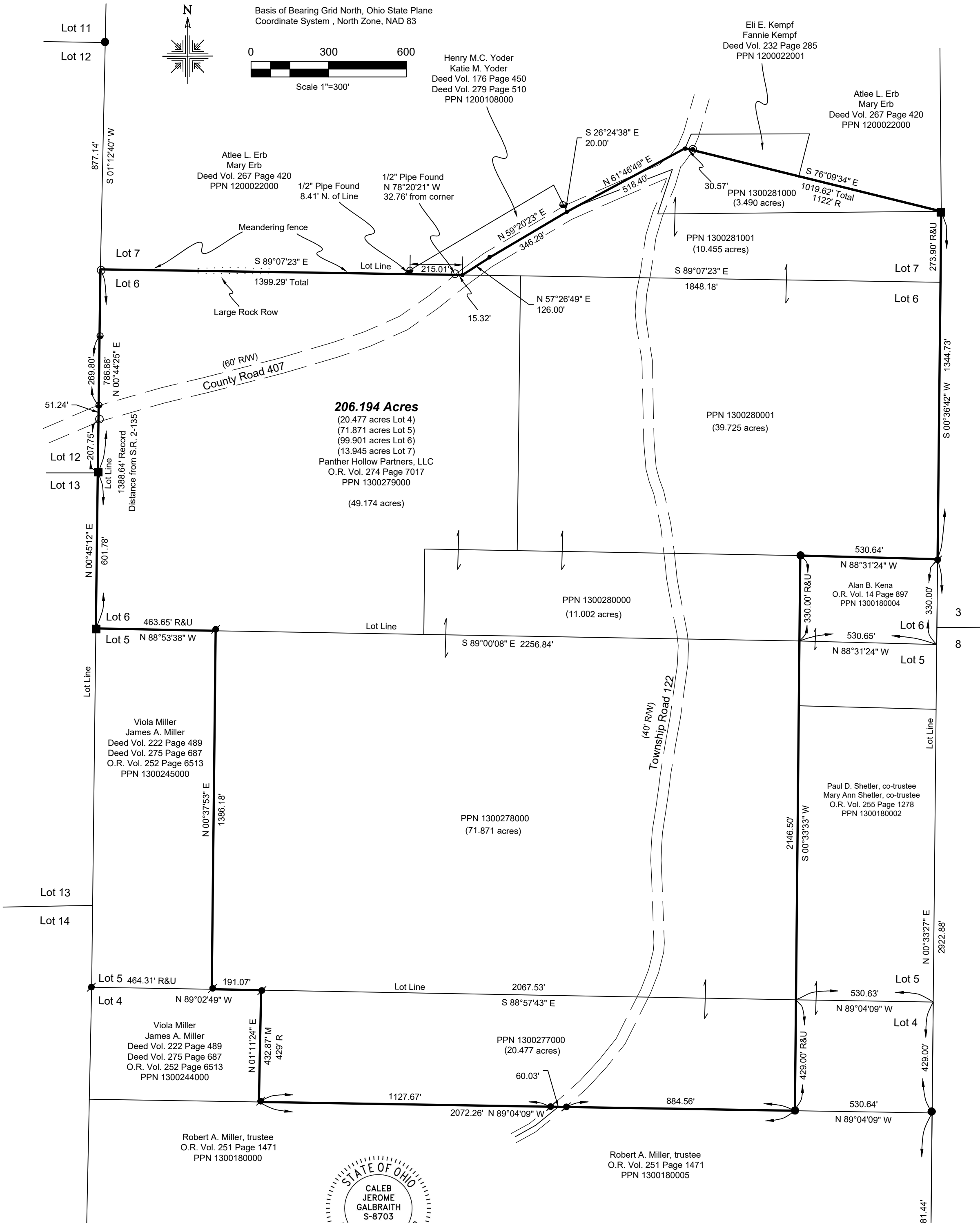
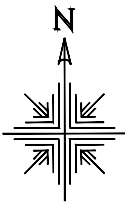
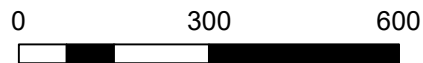
02/04/2021 01:44 PM

SMALL PLAT . 40.00

PAGES: 1

ORV 275 P 5350

Basis of Bearing Grid North, Ohio State Plane
Coordinate System, North Zone, NAD 83



I certify this survey to be correct to the best of my knowledge.

Caleb Galbraith
Caleb Jerome Galbraith P.S. 8703
Date: December 8, 2020
Job ID: 205-H23

APPROVED FOR TRANSFER ONLY
NO SUBDIVISION PLAT REQUIRED

(O.R.C. 711.001 & 711.131)
Lot(s) not for building unless approved by Board of Health
HOLMES CO. PLANNING COMMISSION
By AO Date 1/12/2021



Plat Approved

Holmes County Map Office

1/12/2021 Rg

Pioneer Surveying & Services, LLC.
5434 Township Road 377
Millersburg, Ohio 44654
Phone: 330-231-0497
Email: caleb@pioneersurveyingandservices.com

