

LOCATION MAP

- STONE FOUND
- ✕ SPIKE FOUND
- CAPPED PIN FD. MARKED BAKER (UNLESS NOTED)

REFERENCE SURVEY:  
O.R. VOL. 229; PG. 493  
PLAT VOL. 19; PG. 1925  
PLAT VOL. 19; PG. 2344

BASIS OF BEARING:  
The bearings as shown hereon are relative to GRID NORTH of the OHIO STATE PLANE COORDINATE SYSTEM, NAD 83 DATUM

ENGINEER'S OR ARCHITECT'S DECLARATION: I declare that this plan shows graphically, insofar as possible, the layout and dimensions of units and of the buildings.

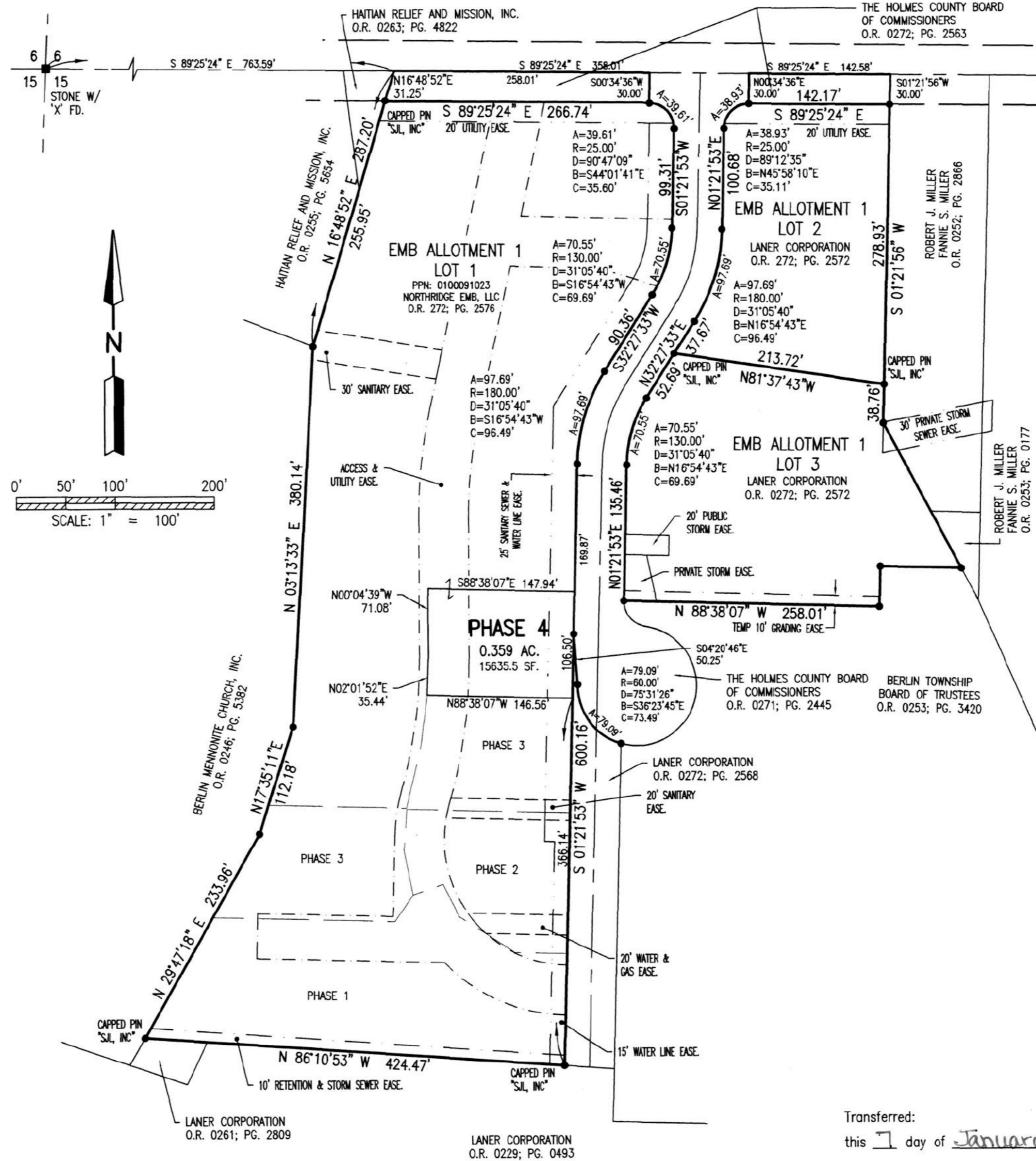


*John A. Long*  
John A. Long, P.E. 67239  
12/2/20  
Date

SURVEYOR'S DECLARATION: I declare that this plan was prepared from an actual survey. That the same shows graphically, insofar as possible, the location of the boundaries, the layout, location and dimensions of units and of the buildings, the location and layout of limited common areas and facilities, the location and layout of common areas and facilities, and the location of appurtenant easements, if any.



*Mark E. Purdy*  
Mark E. Purdy, P.S. 7307  
12-1-20  
Date



**NORTHRIDGE EMB  
CONDOMINIUMS, PHASE 4**  
PART OF LOT 1  
EMB ALLOTMENT 1  
PLAT VOL. 19; PG. 4076  
BERLIN TOWNSHIP  
N.E. QTR. SEC. 15  
T-9N ; R-5W  
HOLMES COUNTY, OHIO

Transferred:  
this 7 day of January, 2021  
Holmes County Auditor's Office *Jacquie Mcree*

Filed for record:  
this \_\_\_ day of \_\_\_\_\_, 20\_\_  
# \_\_\_\_\_ in Volume \_\_\_\_\_, Page \_\_\_\_\_  
Holmes County Recorder's Office

202100012826  
B: 19 P: 4270  
FILED FOR RECORD IN  
HOLMES COUNTY, OH  
ANITA HALL, COUNTY RECORDER  
01/07/2021 10:34 AM  
SMALL PLAT . 40.00  
PAGES: 1  
ORV 275 PG 2301

**SHAFFER, JOHNSTON, LICHTENWALTER & ASSOCIATES, INC.**  
Consulting Engineers & Surveyors  
3477 Commerce Parkway, Suite C  
Wooster, Ohio 44691  
TEL (330) 345-6377 FAX (330) 345-6725 EMAIL sjl@sjl-inc.com

DRAWN C. Folt	CHECKED	1" SCALE = 100'	DATE 11/18/20
DWG NO: EW-2419EA-COND04		JOB NO: EW-2419EA	
			SHEET 1 OF 3