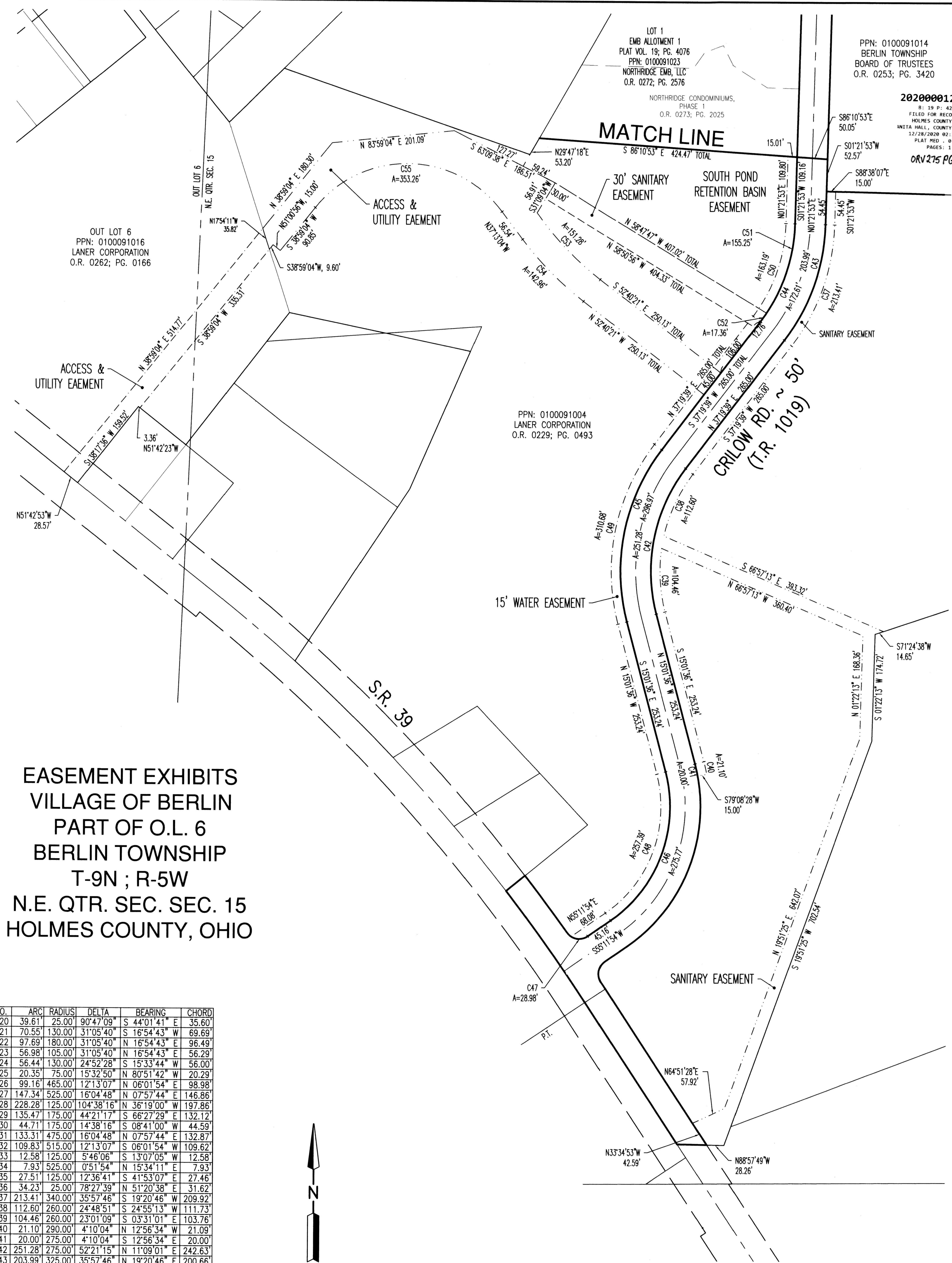


PPN: 0100091014
 BERLIN TOWNSHIP
 BOARD OF TRUSTEES
 O.R. 0253; PG. 3420

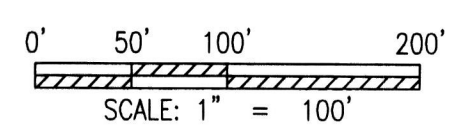
202000012649
 B: 19 P: 4260
 FILED FOR RECORD IN
 HOLMES COUNTY, OH
 AMITA HALL, COUNTY RECORDER
 12/28/2008 02:11 PM
 PLAT MED: 0.00
 PAGES: 3
ORV 275 PG 1399

MATCH LINE



**EASEMENT EXHIBITS
 VILLAGE OF BERLIN
 PART OF O.L. 6
 BERLIN TOWNSHIP
 T-9N ; R-5W
 N.E. QTR. SEC. SEC. 15
 HOLMES COUNTY, OHIO**

NO.	ARC	RADIUS	DELTA	BEARING	CHORD
C20	39.61'	25.00'	90°47'09"	S 44°01'41" E	35.60'
C21	70.55'	130.00'	31°05'40"	S 16°54'43" W	69.69'
C22	97.69'	180.00'	31°05'40"	N 16°54'43" E	96.49'
C23	56.98'	105.00'	31°05'40"	N 16°54'43" E	56.29'
C24	56.44'	130.00'	24°52'28"	S 15°33'44" W	56.00'
C25	20.35'	75.00'	15°32'50"	N 80°51'42" W	20.29'
C26	99.16'	465.00'	12°13'07"	N 06°01'54" E	98.98'
C27	147.34'	525.00'	16°04'48"	N 07°57'44" E	146.86'
C28	228.28'	125.00'	104°38'16"	N 36°19'00" W	197.86'
C29	135.47'	175.00'	44°21'17"	S 66°27'29" E	132.12'
C30	44.71'	175.00'	14°38'16"	S 08°41'00" W	44.59'
C31	133.31'	475.00'	16°04'48"	N 07°57'44" E	132.87'
C32	109.83'	515.00'	12°13'07"	S 06°01'54" W	109.62'
C33	12.58'	125.00'	5°46'06"	S 13°07'05" W	12.58'
C34	7.93'	525.00'	0°51'54"	N 15°34'11" E	7.93'
C35	27.51'	125.00'	12°36'41"	S 41°53'07" E	27.46'
C36	34.23'	25.00'	78°27'39"	N 51°20'38" E	31.62'
C37	213.41'	340.00'	35°57'46"	S 19°20'46" W	209.92'
C38	112.60'	260.00'	24°48'51"	S 24°55'13" W	111.73'
C39	104.46'	260.00'	23°01'09"	S 03°31'01" E	103.76'
C40	21.10'	290.00'	4°10'04"	N 12°56'34" W	21.09'
C41	20.00'	275.00'	4°10'04"	S 12°56'34" E	20.00'
C42	251.28'	275.00'	52°21'15"	N 11°09'01" E	242.63'
C43	203.99'	325.00'	35°57'46"	N 19°20'46" E	200.66'
C44	172.61'	275.00'	35°57'46"	N 19°20'46" E	169.79'
C45	296.97'	325.00'	52°21'15"	N 11°09'01" E	286.75'
C46	275.77'	225.00'	70°13'30"	N 20°05'09" E	258.83'
C47	28.98'	25.00'	66°25'19"	N 88°24'34" E	27.39'
C48	257.39'	210.00'	70°13'30"	S 20°05'09" W	241.58'
C49	310.68'	340.00'	52°21'15"	S 11°09'01" W	299.98'
C50	163.19'	260.00'	35°57'46"	N 19°20'46" E	160.53'
C51	155.25'	275.00'	32°20'43"	S 17°32'14" W	153.19'
C52	17.36'	275.00'	3°37'04"	N 35°31'07" E	17.36'
C53	151.28'	509.41'	17°00'53"	S 43°53'58" E	150.72'
C54	142.96'	530.00'	15°27'18"	N 44°56'42" W	142.53'
C55	353.26'	195.00'	103°47'52"	S 89°07'00" E	306.90'



SHAFFER, JOHNSTON, LICHTENWALTER & ASSOCIATES, INC.
 Consulting Engineers & Surveyors
 3477 Commerce Parkway, Suite C
 Wooster, Ohio 44691
 TEL (330) 345-6377 FAX (330) 345-6725 EMAIL sj@sjl-inc.com

DRAWN C. Foltz	CHECKED	1" SCALE = 100'	DATE 10/09/20
DWG NO: EW-2419CB-BASE		JOB NO: EW-2419G	
		SHEET 2 OF 3	