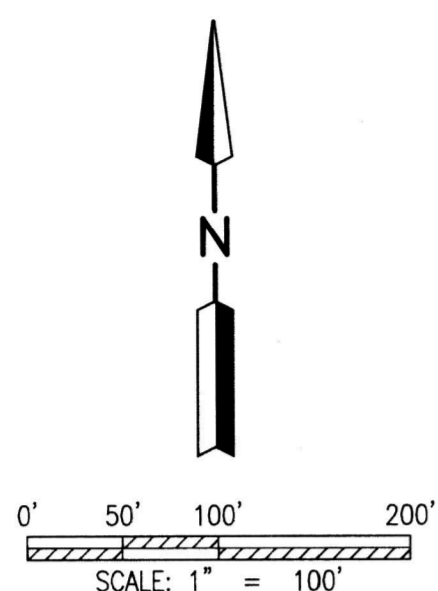


20200011598  
 B: 19 P: 4288  
 FILED FOR RECORD IN  
 HOLMES COUNTY, OH  
 WITA HALL, COUNTY RECORDER  
 11/03/2020 10:19 AM  
 PLAT MED. 43-20  
 PAGES: 1  
 ORV 274 PG 3311



- STONE FOUND
- ✕ SPIKE FOUND
- CAPPED PIN FD. MARKED BAKER (UNLESS NOTED)
- 5/8" REBAR SET WITH I.D. CAP MARKED SJL INC

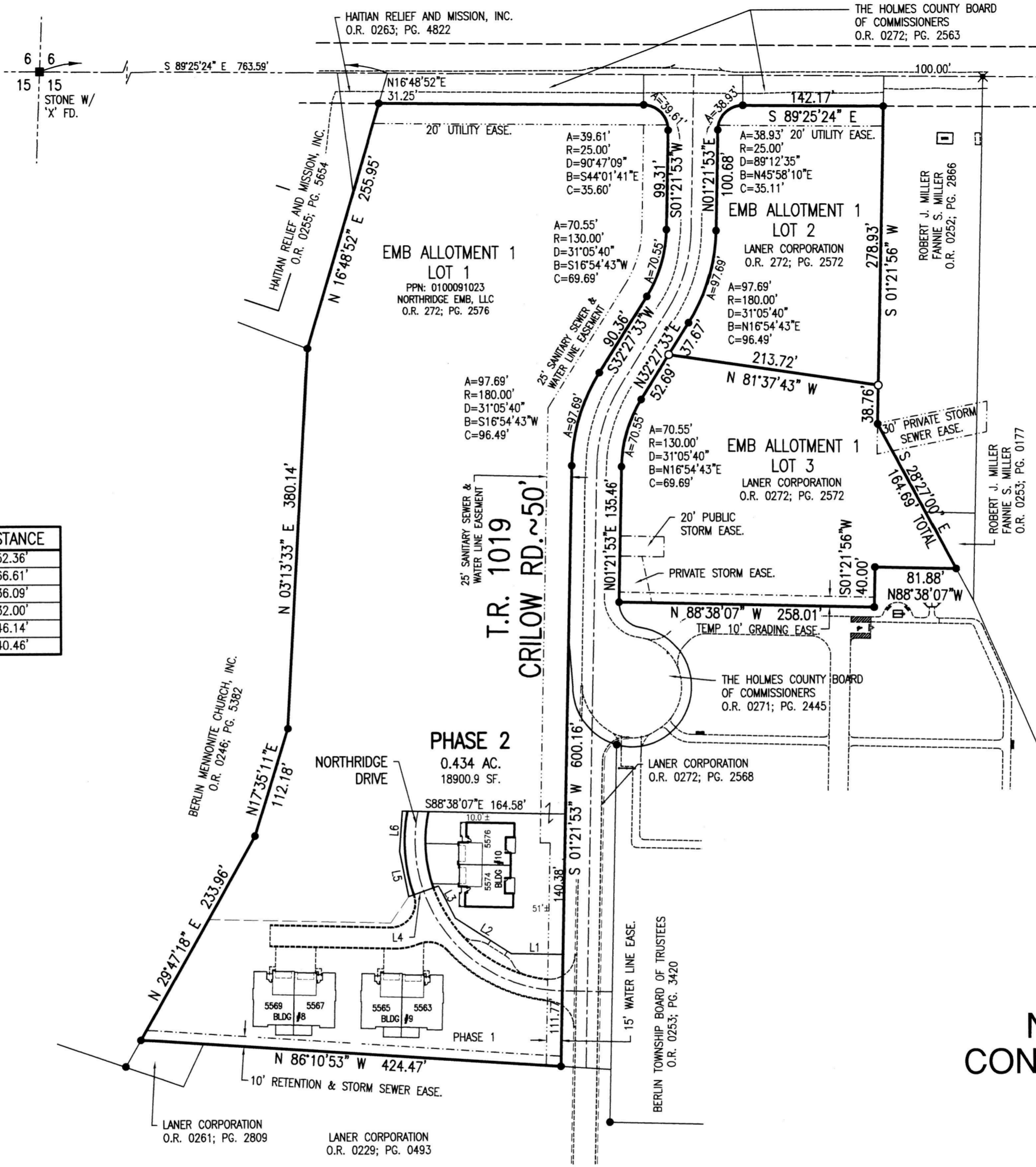
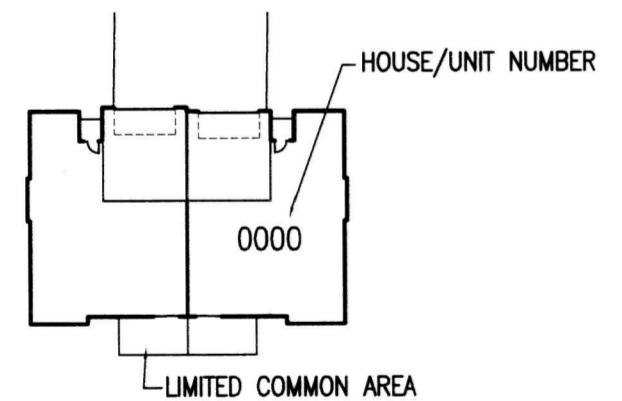
REFERENCE SURVEY:  
 O.R. VOL. 229; PG. 493  
 PLAT VOL. 19; PG. 1925  
 PLAT VOL. 19; PG. 2344

BASIS OF BEARING:  
 The bearings as shown hereon are relative to GRID NORTH of the OHIO STATE PLANE COORDINATE SYSTEM, NAD 83 DATUM

**LINE TABLE**

NO.	BEARING	DISTANCE
L1	N 88°38'07" W	52.36'
L2	N 57°30'14" W	66.61'
L3	N 26°59'17" W	36.09'
L4	S 70°45'06" W	32.00'
L5	N 11°15'34" W	46.14'
L6	N 04°09'55" E	40.46'

PARCEL 6.794 AC.  
 - PHASE 1 1.170 AC.  
 - PHASE 2 0.434 AC.  
 RESIDUE 5.190 AC.



**NORTHRIDGE EMB  
 CONDOMINIUMS, PHASE 2**  
 PART OF LOT 1  
 EMB ALLOTMENT 1  
 PLAT VOL. 19; PG. 4076  
 BERLIN TOWNSHIP  
 N.E. QTR. SEC. 15  
 T-9N ; R-5W  
 HOLMES COUNTY, OHIO

**LEGEND**

UNIT	LIVING	FINISHED BASEMT	GARAGE	PORCH	DECK	PATIO	TOTALS
5574	1519 SF.	-----	531 SF.	120 SF.	126 SF.	126 SF.	2422 SF.
5576	1644 SF.	795 SF.	509 SF.	120 SF.	-----	128 SF.	3196 SF.

**SHAFFER, JOHNSTON, LICHTENWALTER  
 & ASSOCIATES, INC.**  
 Consulting Engineers & Surveyors  
 3477 Commerce Parkway, Suite C  
 Wooster, Ohio 44691  
 TEL (330) 345-6377 FAX (330) 345-6725 EMAIL sjl@sjl-inc.com

DRAWN C. Foltz	CHECKED	SCALE 1" = 100'	DATE 08/19/20
DWG NO: EW-2419EA-COND02		JOB NO: EW-2419EA	
			SHEET 2 OF 3