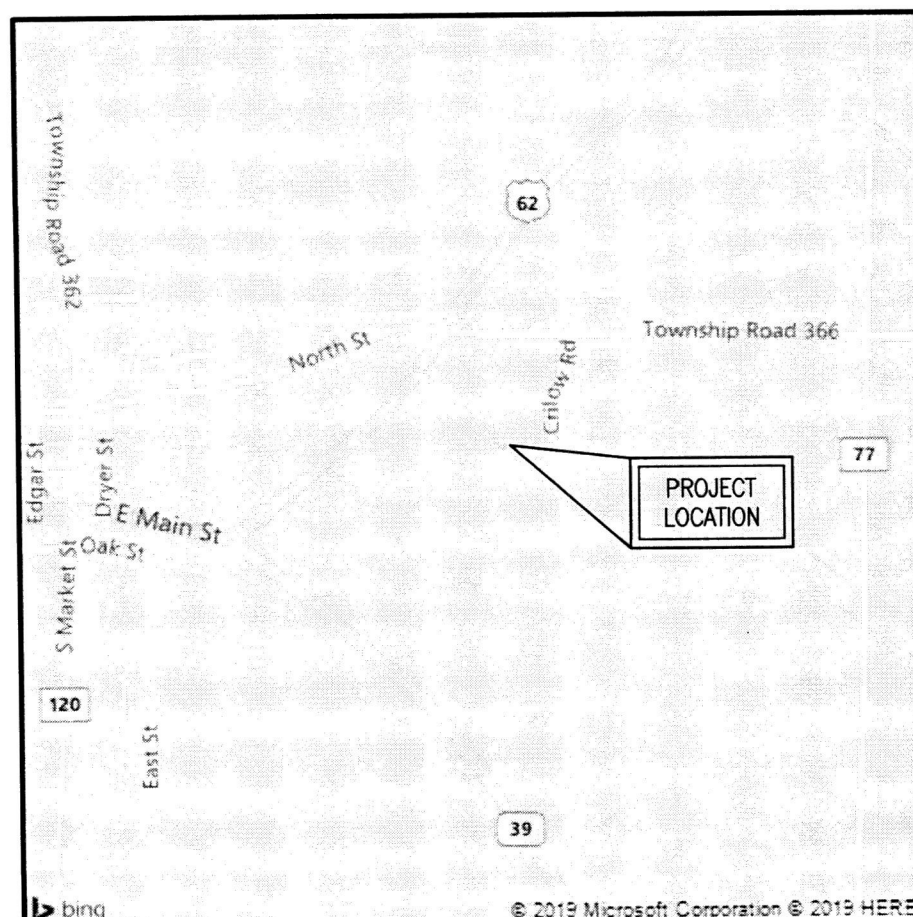


20200011597
 B: 19 P: 4207
 FILED FOR RECORD IN
 HOLMES COUNTY, OH
 NITA HALL, COUNTY RECORDER
 11/03/2020 10:19 AM
 PLAT MED: 43.20
 PAGES: 1
 ORV 274 PG 3311



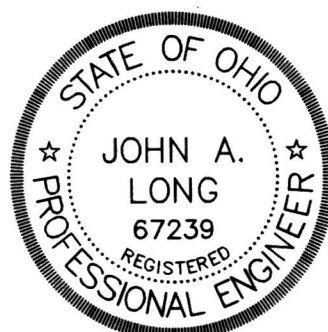
LOCATION MAP

- STONE FOUND
- ✕ SPIKE FOUND
- CAPPED PIN FD.
- MARKED BAKER (UNLESS NOTED)

REFERENCE SURVEY:
 O.R. VOL. 229; PG. 493
 PLAT VOL. 19; PG. 1925
 PLAT VOL. 19; PG. 2344

BASIS OF BEARING:
 The bearings as shown
 hereon are relative to GRID
 NORTH of the OHIO STATE
 PLANE COORDINATE SYSTEM,
 NAD 83 DATUM

ENGINEER'S OR ARCHITECT'S DECLARATION: I declare that this plan shows graphically, insofar as possible, the layout and dimensions of units and of the buildings.

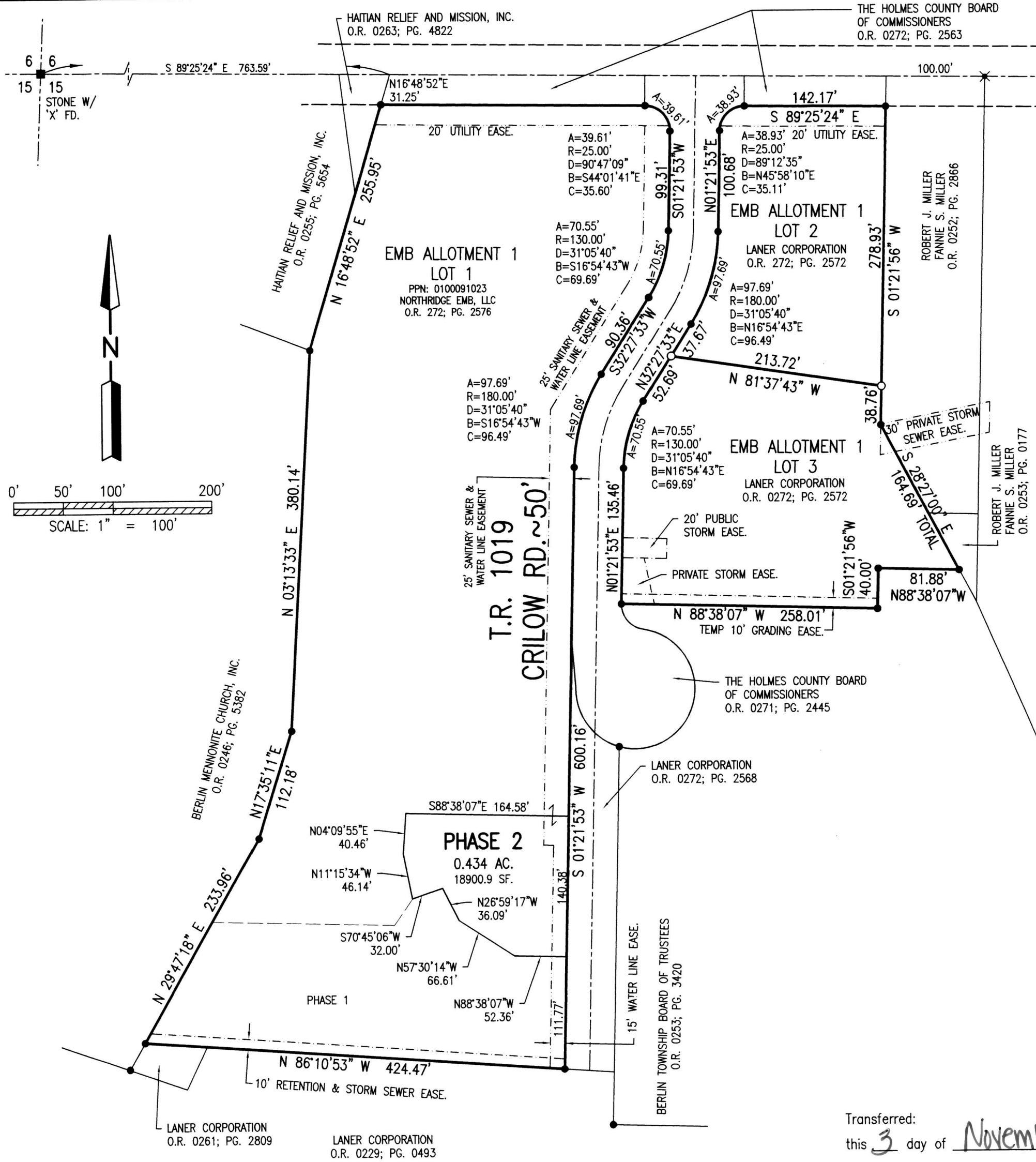


John A. Long
 John A. Long, P.E. 67239
 9/9/20
 Date

SURVEYOR'S DECLARATION: I declare that this plan was prepared from an actual survey. That the same shows graphically, insofar as possible, the location of the boundaries, the layout, location and dimensions of units and of the buildings, the location and layout of limited common areas and facilities, the location and layout of common areas and facilities, and the location of appurtenant easements, if any.



Mark E. Purdy
 Mark E. Purdy, P.S. 7307
 9-9-20
 Date



**NORTHRIDGE EMB
 CONDOMINIUMS, PHASE 2**
 PART OF LOT 1
 EMB ALLOTMENT 1
 PLAT VOL. 19; PG. 4076
 BERLIN TOWNSHIP
 N.E. QTR. SEC. 15
 T-9N ; R-5W
 HOLMES COUNTY, OHIO

Transferred:
 this 3 day of November, 2020
 Filed for record:
 this 3rd day of NOVEMBER, 2020
 # _____ in Volume 19, Page 4207

Jackie McKeever
 Holmes County Auditor's Office
Anita Hall
 Holmes County Recorder's Office

SHAFFER, JOHNSTON, LICHTENWALTER & ASSOCIATES, INC.
 Consulting Engineers & Surveyors
 3477 Commerce Parkway, Suite C
 Wooster, Ohio 44691
 TEL (330) 345-6377 FAX (330) 345-6725 EMAIL sjl@sjl-inc.com

DRAWN C. Falt	CHECKED	1" SCALE = 100'	DATE 08/27/20
DWG NO: EW-2419EA-CONDO2		JOB NO: EW-2419EA	
SHEET 1 OF 3			