

LOCATION MAP

- STONE FOUND
- × SPIKE FOUND
- CAPPED PIN FD. MARKED BAKER (UNLESS NOTED)

REFERENCE SURVEY:  
O.R. VOL. 229; PG. 493  
PLAT VOL. 19; PG. 1925  
PLAT VOL. 19; PG. 2344

BASIS OF BEARING:  
The bearings as shown hereon are relative to GRID NORTH of the OHIO STATE PLANE COORDINATE SYSTEM, NAD 83 DATUM

ENGINEER'S OR ARCHITECT'S DECLARATION: I declare that this plan shows graphically, insofar as possible, the layout and dimensions of units and of the buildings.



*John A. Long*  
John A. Long, P.E. 67239

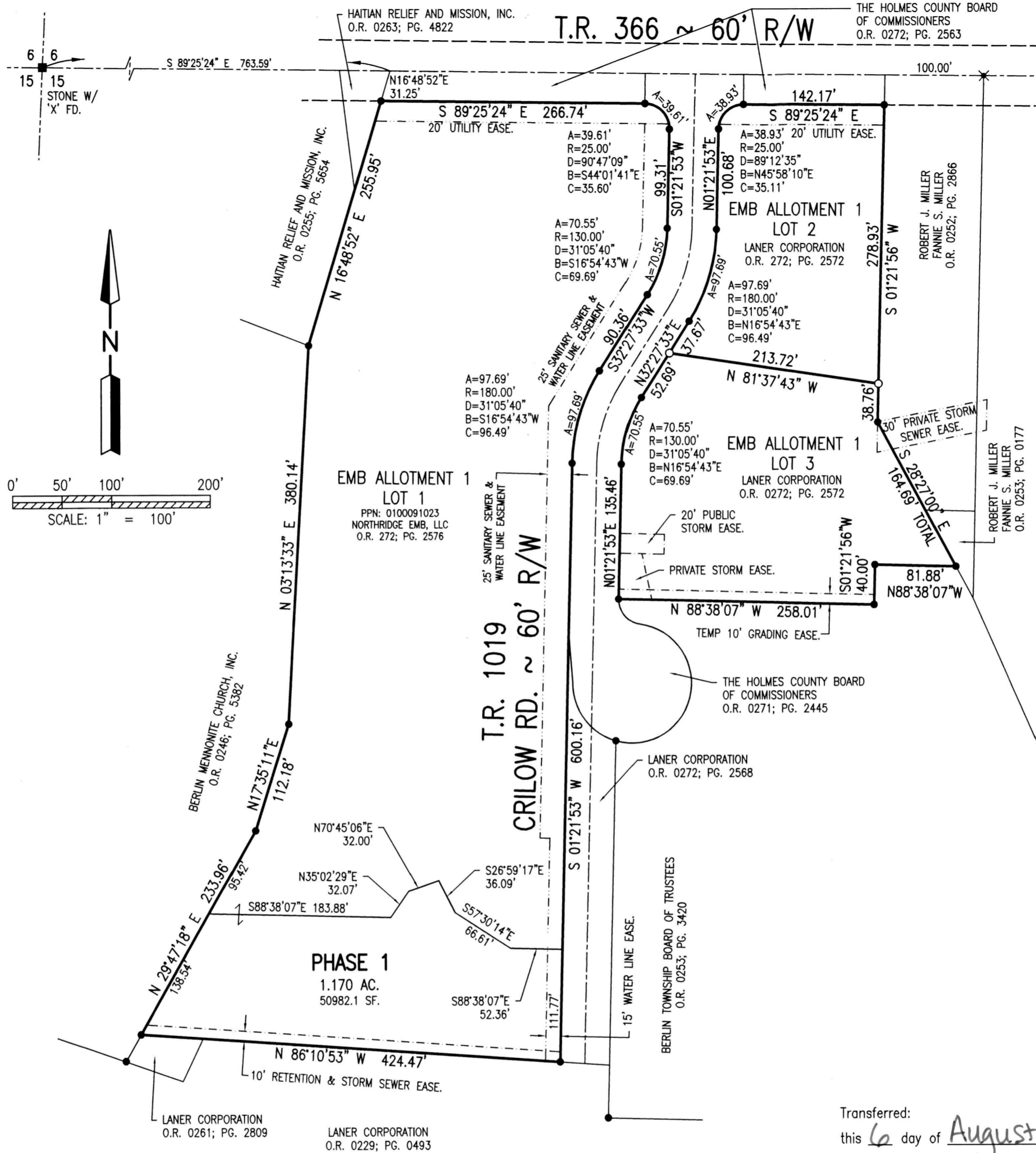
7/13/20  
Date

SURVEYOR'S DECLARATION: I declare that this plan was prepared from an actual survey. That the same shows graphically, insofar as possible, the location of the boundaries, the layout, location and dimensions of units and of the buildings, the location and layout of limited common areas and facilities, the location and layout of common areas and facilities, and the location of appurtenant easements, if any.



*Mark E. Purdy*  
Mark E. Purdy, P.S. 7307

7-13-20  
Date



**NORTHRIDGE EMB CONDOMINIUMS, PHASE 1**  
PART OF LOT 1  
EMB ALLOTMENT 1  
PLAT VOL. 19; PG. 4076  
BERLIN TOWNSHIP  
N.E. QTR. SEC. 15  
T-9N ; R-5W  
HOLMES COUNTY, OHIO

Transferred:  
this 6 day of August, 2020  
Filed for record:  
this \_\_\_ day of \_\_\_\_\_, 20\_\_  
# \_\_\_\_\_ in Volume \_\_\_\_\_, Page \_\_\_\_.

*Jackie McKee*  
Holmes County Auditor's Office  
Holmes County Recorder's Office

**SHAFFER, JOHNSTON, LICHTENWALTER & ASSOCIATES, INC.**  
Consulting Engineers & Surveyors  
3477 Commerce Parkway, Suite C  
Wooster, Ohio 44691  
TEL (330) 345-6377 FAX (330) 345-6725 EMAIL sjl@sjl-inc.com

DRAWN C. Falt	CHECKED	SCALE 1" = 100'	DATE 06/30/20
DWG NO: EW-2419EA-COND01		JOB NO: EW-2419EA	
			SHEET 1 OF 4

P.019-4134

ORV 273 p2025