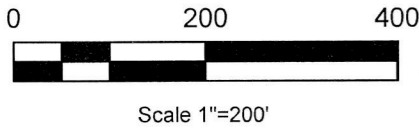


Hardy Township 1st Qtr. Lot 36 T-9 N; R-7 W Holmes County, Ohio

SURVEYED FOR: Advant Company
Basis of Bearing Grid North, Ohio State Plane
Coordinate System, North Zone, NAD 83



- Stone Found
- 5/8" Rebar Found unless noted
- ◆ 5/8" Capped Pin Found "Blaine"
- 5/8" Capped Pin Found "Baker"
- 5/8" Capped Pin Set "Galbraith"
- △ Railroad Spike Set
- ▲ Railroad Spike Found
- Point

I certify this survey to be correct to the best of my knowledge.

Caleb Jerome Galbraith P.S. 8703
Date: May 22, 2020
Job ID: 7120-H17

Pioneer Surveying & Services, LLC.
5434 Township Road 377
Millersburg, Ohio 44654
Phone: 330-231-0497
Email: caleb@pioneersurveyingandservices.com



REFERENCES:

Deeds as shown

- Plat Vol. 17 Page 350
- Plat Vol. 16 Page 26
- Plat Vol. 19 Page 3296
- Plat Vol. 19 Page 2565
- Plat Vol. 13 Page 121
- Plat Vol. 12 Page 827
- Plat Vol. 2 Page 387
- Plat Vol. 19 Page 3510
- Plat Vol. 14 Page 630
- Plat Vol. 7 Page 157
- Plat Vol. 8 Page 603
- Plat Vol. 12 Page 301
- Plat Vol. 12 Page 514
- Plat Vol. 19 Page 366
- Plat Vol. 19 Page 200



- 1036**
Meadow Glen Subdivision
Phase 1 (PV. 2-387)
Carol C. Martin
O.R. Vol. 199 Page 2587
PPN 0701795000
- 1035**
Meadow Glen Subdivision
Phase 1(PV. 2-387)
Zane G. Craig
Cheryl L. Craig
O.R. Vol. 261 Page 923
PPN 0701794000
- 1034**
Meadow Glen Subdivision
Phase 1(PV. 2-387)
Thomas P. Bernard, co-trustee
Margaret M. Bernard, co-trustee
O.R. Vol.261 Page 4652
PPN 0701793000
- 1054**
Meadow Glen Subdivision
Phase 1, Replat No. 1 (PV 19-3296)
Steven H. Bigler
Regina S. Bigler
O.R. Vol.265 Page 1593
PPN 0701786001
- 1055**
Meadow Glen Subdivision
Phase 1, Replat No. 1 (PV 19-3296)
Troy E. Miller
Pamela S. Miller
O.R. Vol.261 Page 3290
PPN 0701788001
- 1030**
Meadow Glen Subdivision
Phase 1 (PV. 2-387)
Kim A. Herman
Cynthia C. Herman
O.R. Vol. 244 Page 1544
PPN 0701789000
- Max A. Miller, trustee
O.R. Vol. 254 Page 4642
PPN 0601067003

(B) Ferman J. Schlabach
Daniel R. Hostetler
O.R. Vol. 269 Page 686
PPN 0601033000

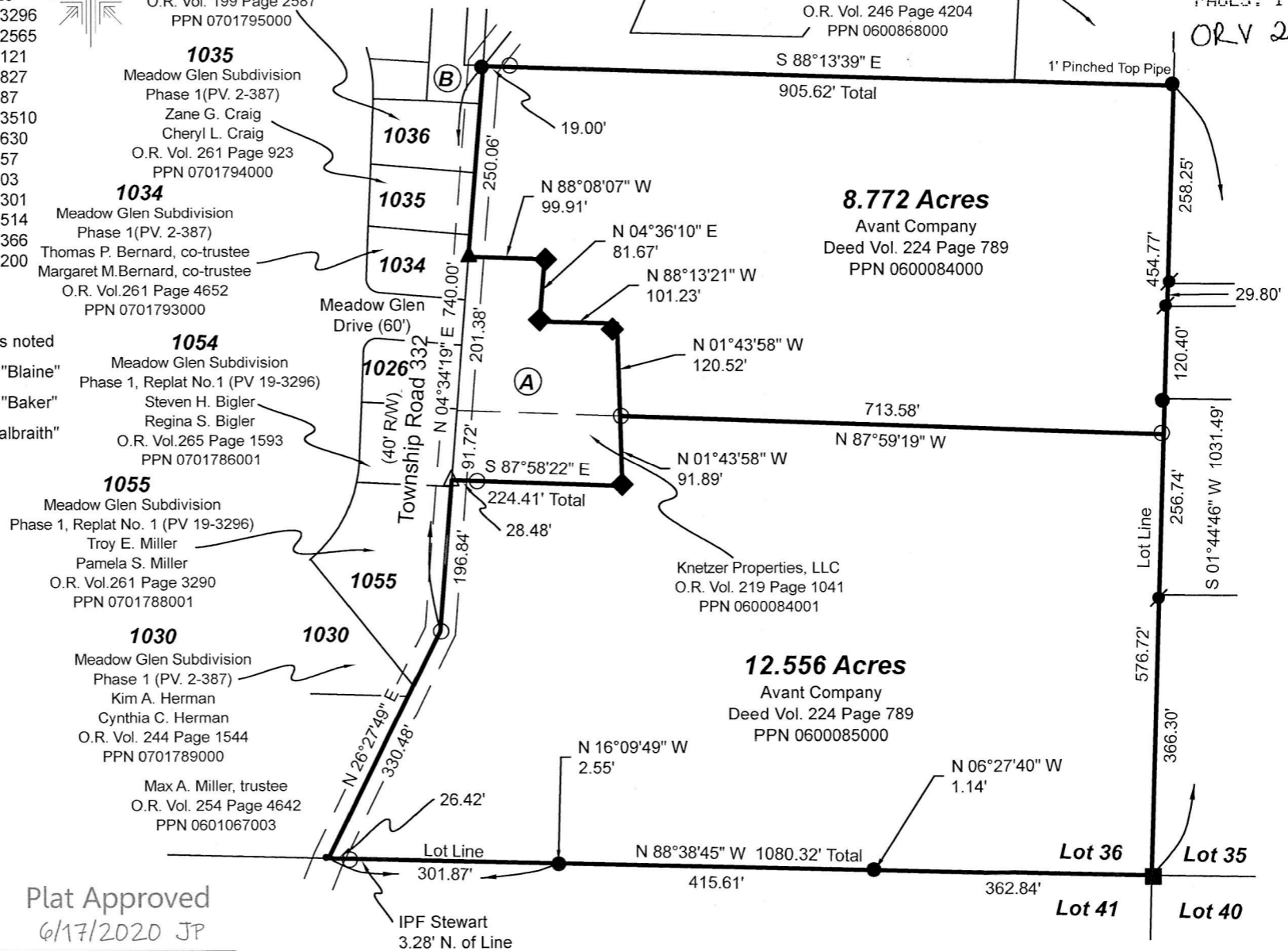
Rene J. Weber
Deed Vol. 185 Page 574
O.R. Vol. 208 Page 1942
PPN 0600870000

Weber's Ferndale Farm, LLC
O.R. Vol. 246 Page 4204
PPN 0600868000

202000009042
B: 19 P: 4096
FILED FOR RECORD IN
HOLMES COUNTY, OH
ANITA HALL, COUNTY RECORDER
06/23/2020 02:42 PM
SMALL PLAT . 40.00
PAGES: 1

ORV 272 page 502

Holmes County, OH



Plat Approved
6/17/2020 JP

APPROVED FOR TRANSFER ONLY
 NO SUBDIVISION PLAT REQUIRED
 HOLMES COUNTY, OH
 (S-8703, 711,001, and 711,151)
 Lot(s) not for building unless
 approved by Board of Planning
 HOLMES CO. PLANNING COMMISSION
 by AC