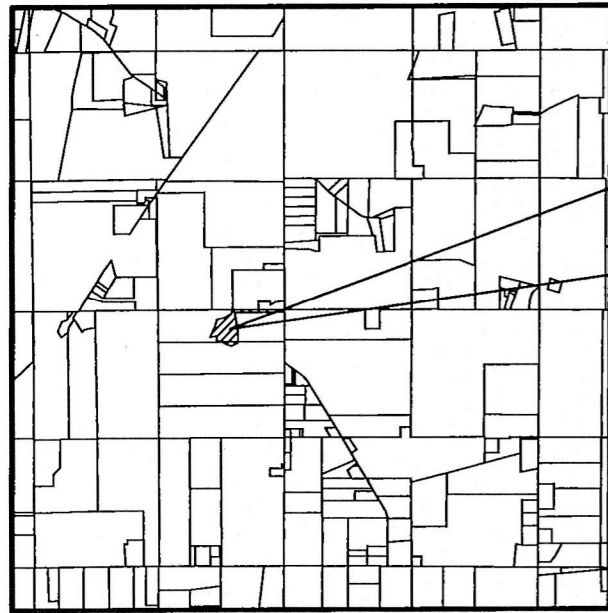


- I.P. OR PIPE FOUND
- 5/8" REBAR SET WITH I.D. CAP MARKED SJL INC



LOCATION MAP

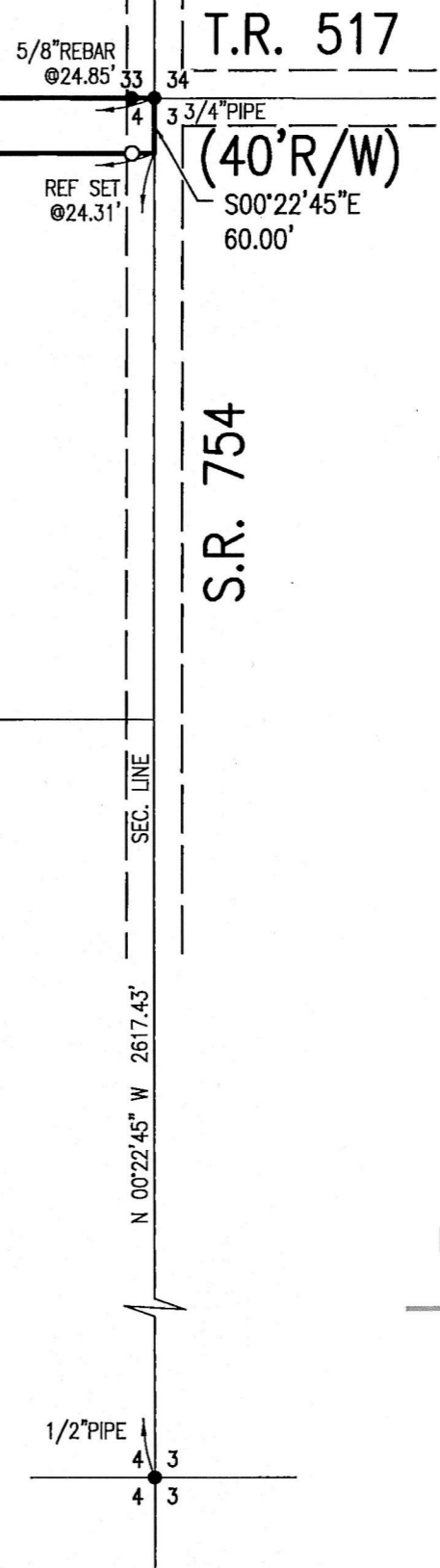
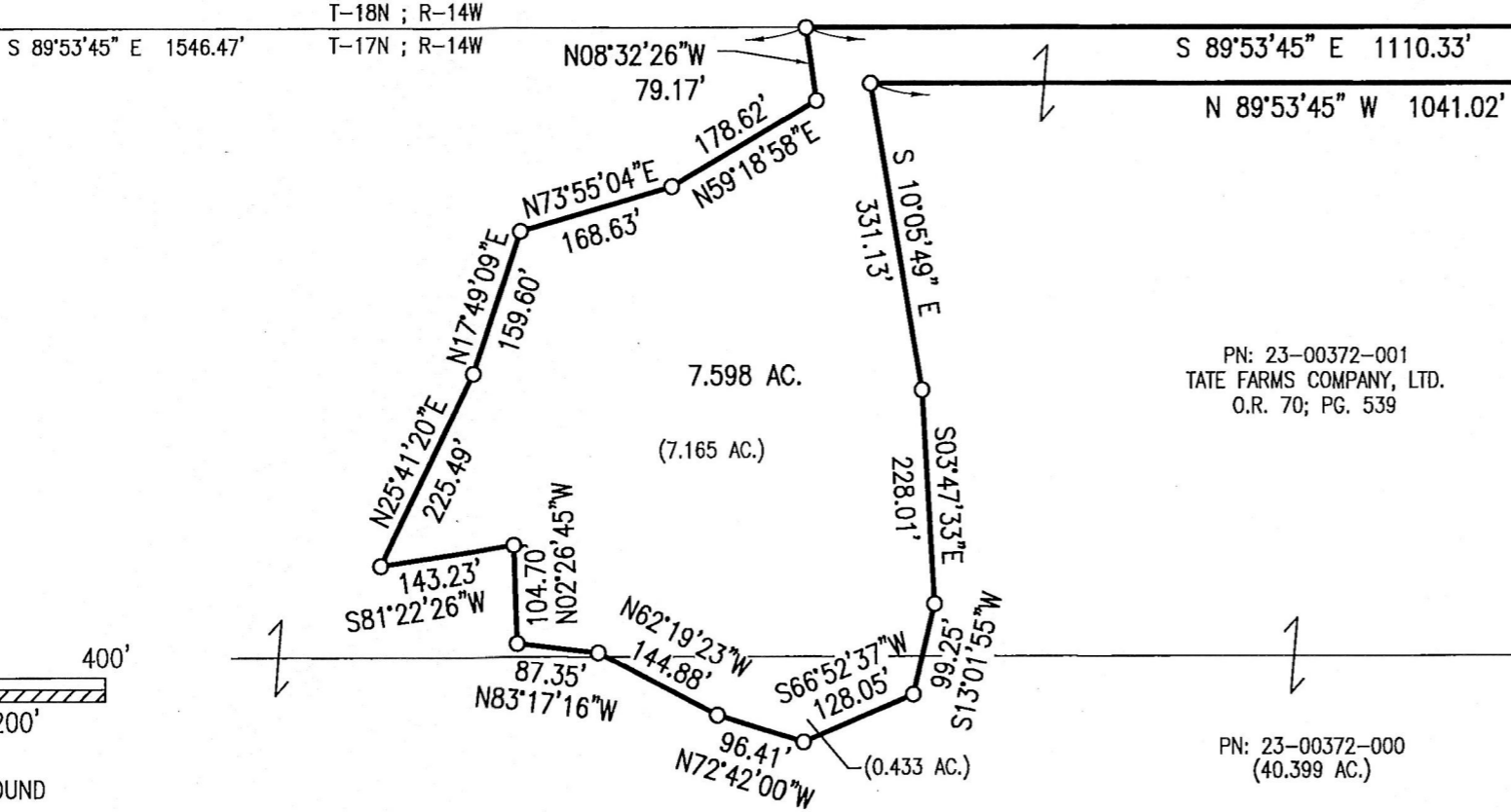
REFERENCE SURVEY:  
 VOL. 8; PG. 654  
 VOL. 19; PG. 3589  
 VOL. 19; PG. 3786

BASIS OF BEARING:  
 The bearings as shown hereon are relative to GRID NORTH of the OHIO STATE PLANE COORDINATE SYSTEM, NAD 83 DATUM

# RIPLEY TOWNSHIP T-17N ; R-14W N.E. QTR. SEC. 4 HOLMES COUNTY, OHIO

Distances shown hereon are expressed in feet and decimal parts thereof, bearings are used to express angles only, iron pins or monuments were found or set as indicated hereon. All of which I believe to be correct to the best of my knowledge.

By: Mark E. Purdy 4-3-20  
 Mark E. Purdy, P.S. #7307 Date



202000008174  
 B 19 P 4050  
 FILED FOR RECORD IN  
 HOLMES COUNTY, OH  
 ANITA HALL, COUNTY RECORDER  
 05/07/2020 08 58 AM  
 SMALL PLAT 40 00  
 PAGES 1

ORV 272 PG 278



Plat Approved  
 4/16/2020 JP

<b>SHAFFER, JOHNSTON, LICHTENWALTER &amp; ASSOCIATES, INC.</b> Consulting Engineers & Surveyors 3477 Commerce Parkway, Suite C Wooster, Ohio 44691 TEL (330) 345-6377 FAX (330) 345-6725 EMAIL sjl@sjl-inc.com			
DRAWN C. Folb	CHECKED	SCALE 1" = 200'	DATE 03/18/20
DWG NO: <b>SW-5842-BASE</b>		JOB NO: <b>SW-5842</b>	
			SHEET <b>1</b> OF <b>1</b>