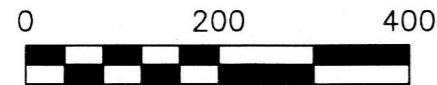


PRAIRIE TOWNSHIP
 S.E. QTR. SECTION 5
 T-13 N; R-13 W
 HOLMES COUNTY, OHIO

SURVEYED FOR: TOM WOODRUFF



SCALE: 1"=200'

- ▲ R.R. SPIKE FOUND
- 5/8" REBAR FOUND
UNLESS OTHERWISE NOTED
- 5/8" REBAR SET WITH I.D. CAP
I.D. CAP MARKED "BAKER 6938"

REFERENCES

- DEED VOL. 257 PAGE 585
- O.R. VOL. 241 PAGE 267
- O.R. VOL. 230 PAGE 1384
- O.R. VOL. 259 PAGE 5513
- PLAT VOL. 10 PAGE 832
- PLAT VOL. 19 PAGE 3522
- BEARINGS FROM PLAT VOL. 19 PAGE 3522



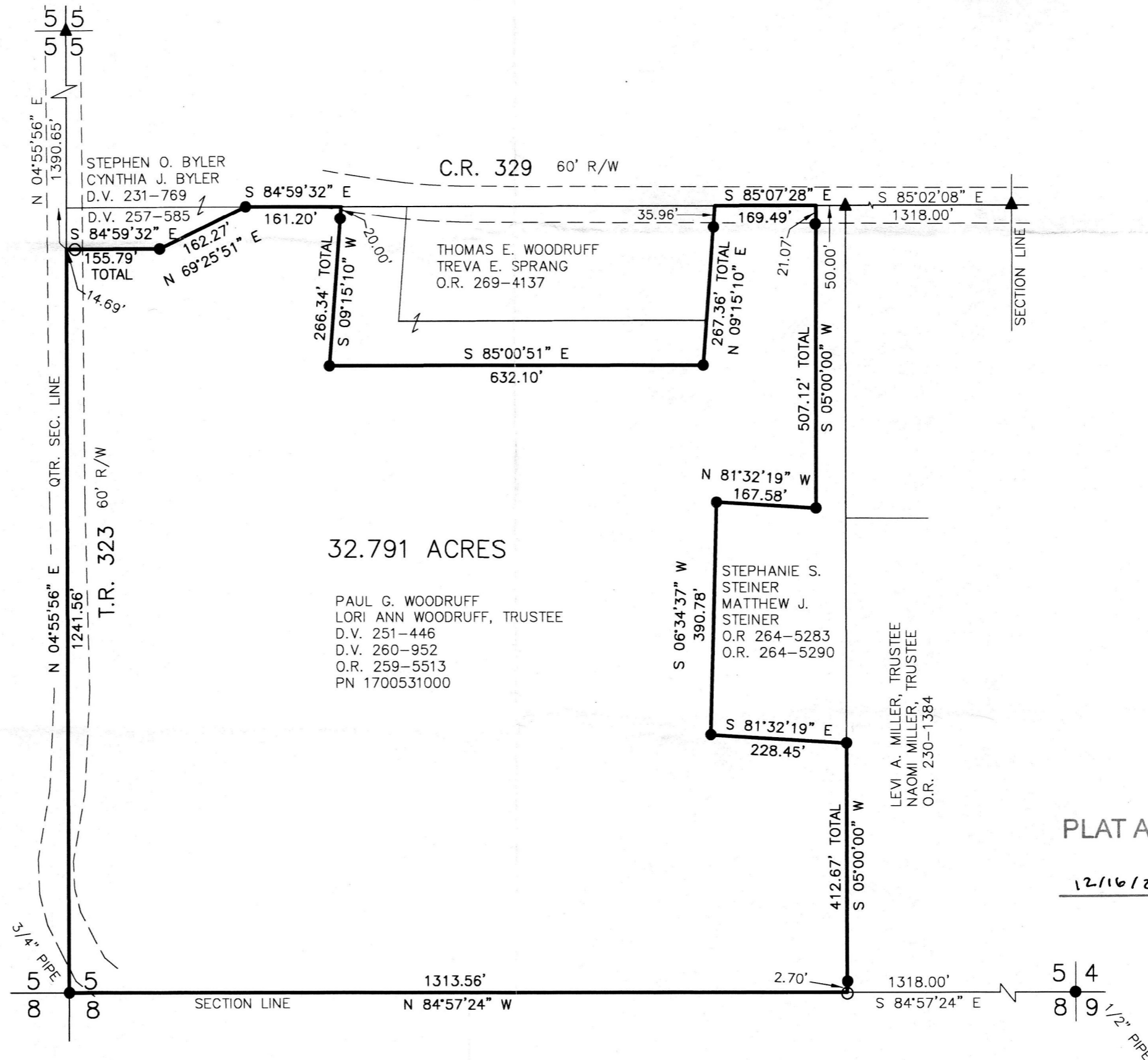
I CERTIFY THIS SURVEY TO BE CORRECT
 TO THE BEST OF MY KNOWLEDGE.

Donald C. Baker
 DONALD C. BAKER P.S. 6938
 DATE: NOVEMBER 20, 2019
 KES
 FILE NAME: WORK6\S-595-19\MLD

DONALD C. BAKER SURVEYING
 138 N. CLAY STREET
 MILLERSBURG, OHIO 44654
 PH. 330-674-4788
 FAX 330-674-6027

201900005926
 B: 19 P: 3959
 FILED FOR RECORD IN
 HOLMES COUNTY, OH
 ANITA HALL, COUNTY RECORDER
 12/23/2019 11:07 AM
 SMALL PLAT . 40.00
 PAGES: 1

ORV 270 PG 3183



APPROVED FOR TRANSFER ONLY
 NO SUBDIVISION PLAT REQUIRED
 (O.R.C. 711.001 & 711.131)
 Lot(s) not for building unless
 approved by Board of Health.
 HOLMES CO. PLANNING COMMISSION
 By: *[Signature]* Date: 12/18/19

PLAT APPROVED

12/16/2019 JP

