

VILLAGE OF HOLMESVILLE  
HOMESTEAD ADDITION

PRAIRIE TOWNSHIP  
S.E. QTR. SECTION 3  
T-13 N; R-13 W  
HOLMES COUNTY, OHIO

SURVEYED FOR: STEVE SCHLABACH



SCALE: 1"=30'

- 5/8" REBAR FOUND UNLESS OTHERWISE NOTED
- 5/8" REBAR SET WITH I.D. CAP I.D. CAP MARKED "BAKER 6938"



I CERTIFY THIS SURVEY TO BE CORRECT TO THE BEST OF MY KNOWLEDGE.

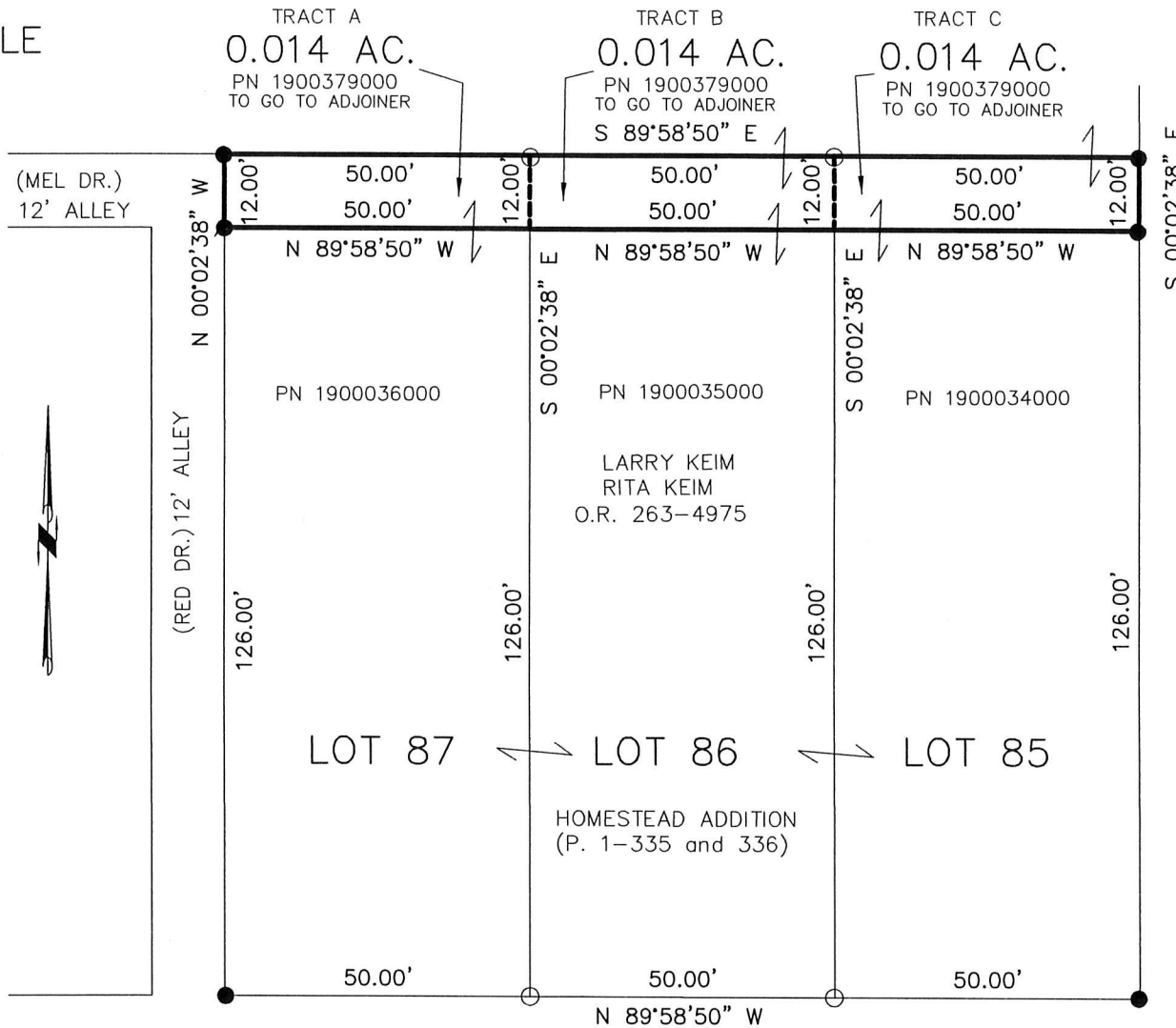
*Donald C. Baker*

DONALD C. BAKER P.S. 6938

DATE: APRIL 8, 2019

KES

FILE NAME: WORK6\S-111-19



REFERENCES

- O.R. VOL. 263 PAGE 4975
- PLAT VOL. 1 PAGE 335
- PLAT VOL. 19 PAGE 3113
- PLAT VOL. 19 PAGE 54
- BEARINGS FROM PLAT VOL. 19 PAGE 54

B STREET 66'

PLAT APPROVED

*11/7/2019*

201900005201

B: 19 P: 3915

FILED FOR RECORD IN  
HOLMES COUNTY, OH  
ANITA HALL, COUNTY RECORDER  
11/08/2019 09:05 AM  
SMALL PLAT . 40.00

PAGES: 1

*DRV 26<sup>th</sup> PG 6995*

APPROVED FOR TRANSFER ONLY  
NO SUBDIVISION PLAT REQUIRED

(O.R.C. 711.001 & 711.131)  
Lot(s) not for building unless  
approved by Board of Health.

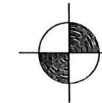


HOLMES CO. PLANNING COMMISSION

By *A* Date *12/30/19*

THIRD STREET 66'

A.K.A. C.R. 192



BAKER SURVEYING, LLC  
138 N. CLAY STREET  
MILLERSBURG, OHIO 44654  
PH. 330-674-4788  
FAX 330-674-6027

