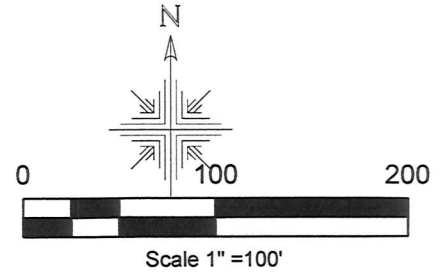


Knox Township
 N.W. Qtr. Section 27
 T-19 N; R-15W
 Holmes County, Ohio

REFERENCES:

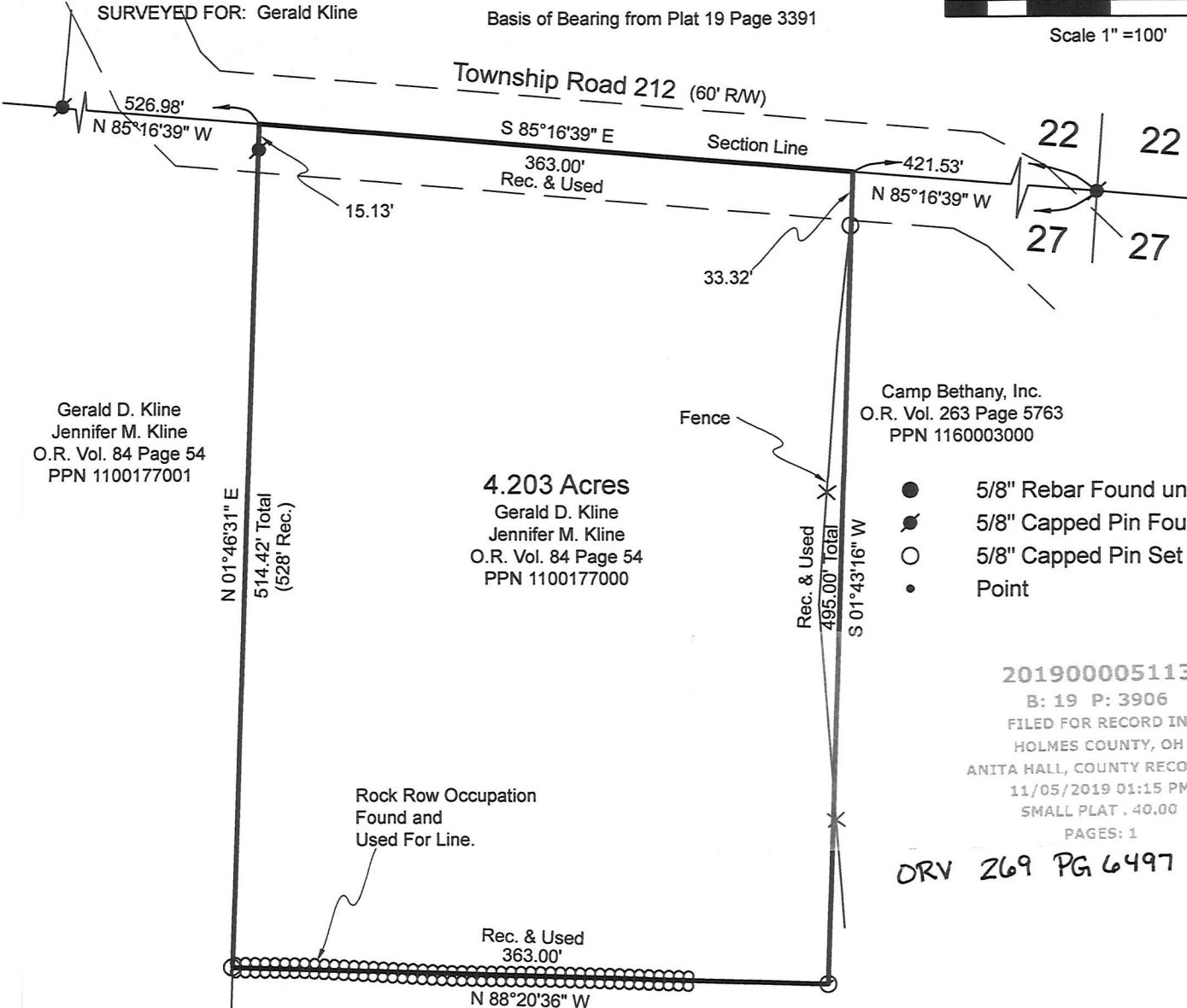
Deeds as shown

Plat Vol 18 Page 43 Plat Vol 19 Page 3391
 Plat Vol 19 Page 2679 Plat Vol 12 Page 284
 Plat Vol 13 Page 53 Plat Vol. 19 Page 3661



Basis of Bearing from Plat 19 Page 3391

SURVEYED FOR: Gerald Kline



Gerald D. Kline
 Jennifer M. Kline
 O.R. Vol. 84 Page 54
 PPN 1100177001

4.203 Acres
 Gerald D. Kline
 Jennifer M. Kline
 O.R. Vol. 84 Page 54
 PPN 1100177000

Camp Bethany, Inc.
 O.R. Vol. 263 Page 5763
 PPN 1160003000

- 5/8" Rebar Found unless noted
- ⊙ 5/8" Capped Pin Found "Baker"
- 5/8" Capped Pin Set "Galbraith"
- Point

201900005113
 B: 19 P: 3906
 FILED FOR RECORD IN
 HOLMES COUNTY, OH
 ANITA HALL, COUNTY RECORDER
 11/05/2019 01:15 PM
 SMALL PLAT . 40.00
 PAGES: 1

DRV 269 PG 6497



I certify this survey to be correct to the best of my knowledge.

[Signature]
 Caleb Jerome Galbraith P.S. 8703
 Date: October 14, 2019
 Job ID: 16519
 Pioneer Surveying & Services, LLC.
 5434 Township Road 377
 Millersburg, Ohio 44654
 Phone: 330-231-0497
 Email: caleb@pioneersurveyingandservices.com

APPROVED FOR TRANSFER ONLY
 NO SUBDIVISION PLAT REQUIRED
 (O.R.C. 711.001 & 711.131)
 Lot(s) not for building unless
 approved by Board of Health.
HCPC
 HOLMES CO. PLANNING COMMISSION
 By *[Signature]* Date 11/5/19



PLAT APPROVED

10/31/2019 JP

