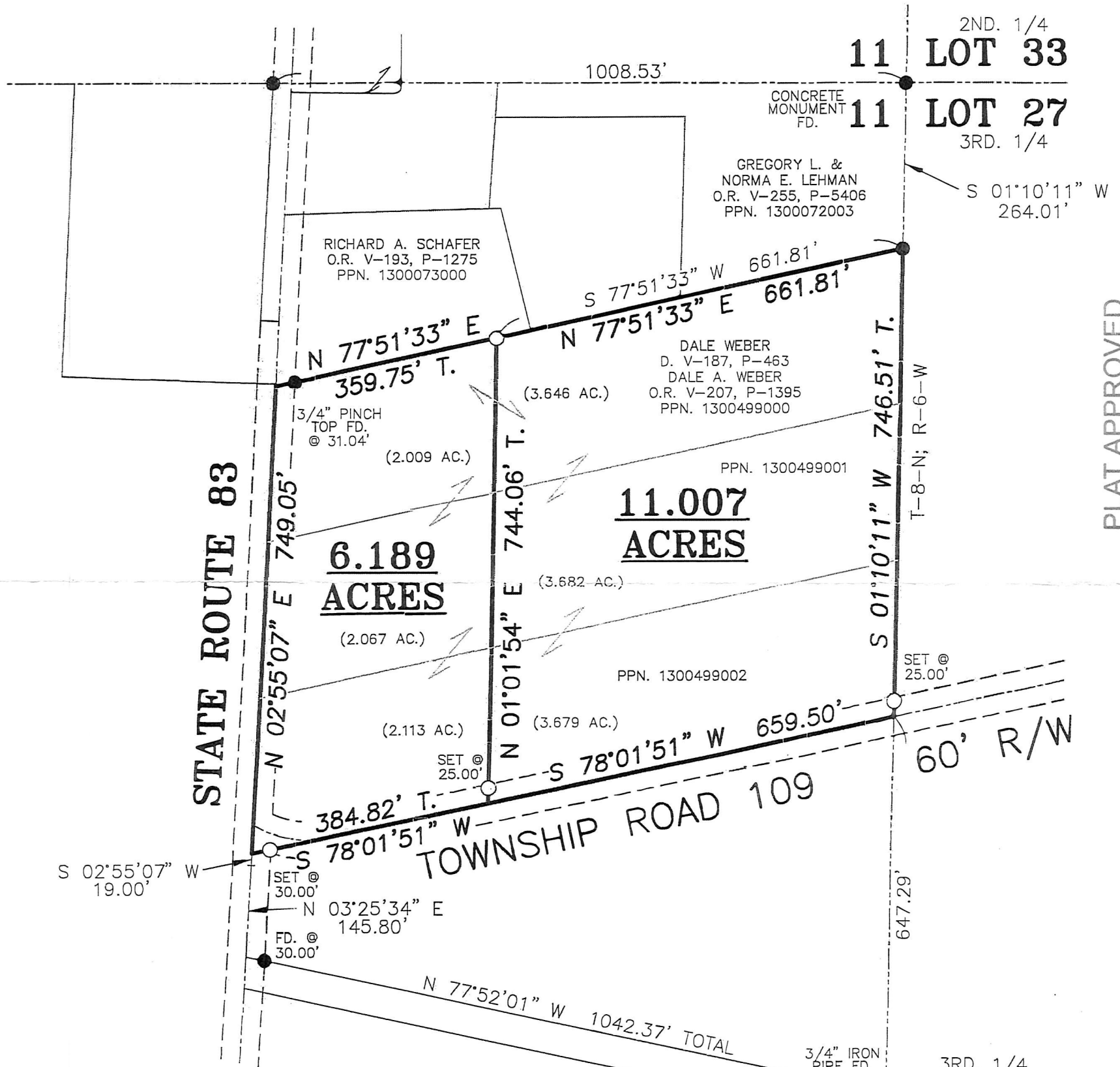
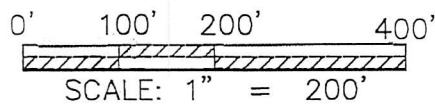


ORV 269 Page 5528

MAP OF SURVEY

SE QUARTER OF SECTION 11
T-8-N; R-7-W
MECHANIC TOWNSHIP
HOLMES COUNTY, OHIO



PLAT APPROVED

10/11/2019 JJP

REFERENCE SURVEY:
PLAT VOL. 4, PG. 188
PLAT VOL. 5, PG. 62
PLAT VOL. 5, PG. 77
PLAT VOL. 12, PG. 872
PLAT VOL. 14, PG. 14
PLAT VOL. 16, PG. 338
PLAT VOL. 16, PG. 968
PLAT VOL. 19, PG. 1184
PLAT VOL. 19, PG. 2646

BASIS OF BEARING:
THE BEARINGS AS SHOWN HEREON ARE
RELATIVE TO GRID NORTH OF THE OHIO
STATE PLANE COORDINATE SYSTEM,
NAD 83 DATUM

- T. TOTAL DISTANCE
- CAPPED PIN FOUND WITH I.D. CAP MARKED "BAKER" (UNLESS NOTED)
- 5/8" REBAR SET WITH I.D. CAP MARKED "LINGENFELTER"

Distances shown hereon are expressed in feet and decimal parts thereof, bearings are used to express angles only, iron pins or monuments were found or set as indicated hereon. All of which I believe to be correct to the best of my knowledge.



APPROVED FOR TRANSFER ONLY
NO SUBDIVISION PLAT REQUIRED
(O.R.C. 711.001 & 711.131)
Lot(s) not for building unless approved by Board of Health.
HCP
HOLMES CO. PLANNING COMMISSION
By: *[Signature]* Date: 10/13/19

By: *[Signature]* 8-28-19
JASON J. LINGENFELTER, P.S. #8499 DATE