

ORV 269 PGS 310,332



SCALE: 1"=200'

- 5/8" REBAR FOUND UNLESS OTHERWISE NOTED
- △ R.R. SPIKE SET
- 5/8" REBAR SET WITH I.D. CAP I.D. CAP MARKED "BAKER 6938"
- ⊙ MAG NAIL SET

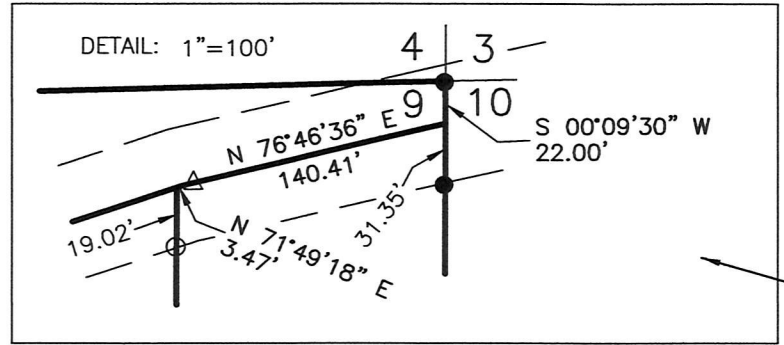
MASTER PLAT

THE PURPOSE OF THIS SURVEY

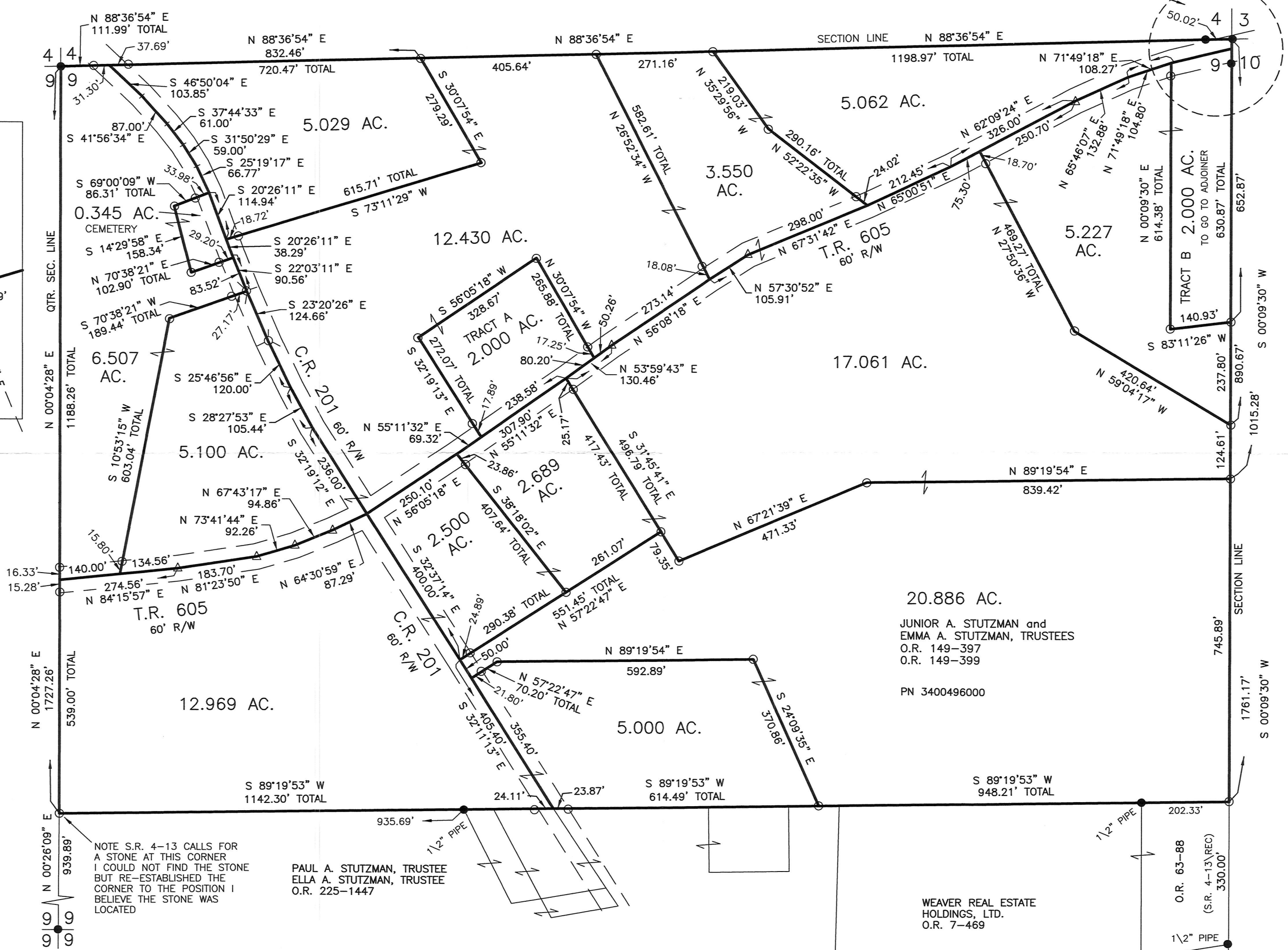
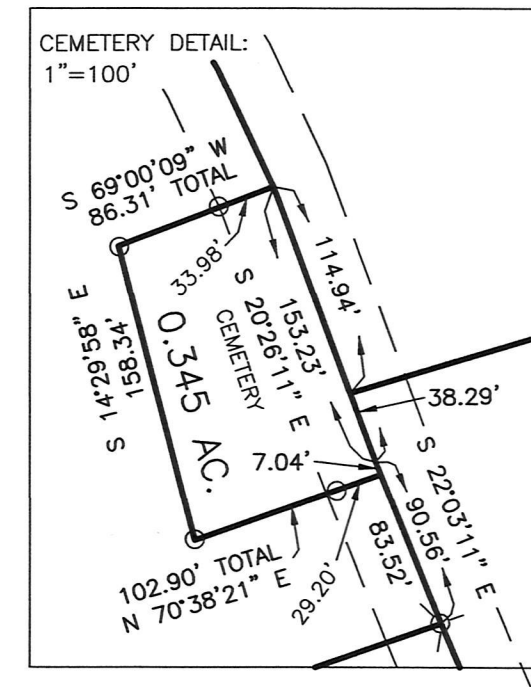
ACTION 1) CONVEY ALL PARCELS FROM JUNIOR A. STUTZMAN and EMMA A. STUTZMAN, TRUSTEES TO THEMSELVES

SALT CREEK TOWNSHIP  
 N.E. QTR. SECTION 9  
 T-14 N; R-12 W  
 HOLMES COUNTY, OHIO

SURVEYED FOR: KAUFMAN REALTY



SEE DETAIL



- REFERENCES
- O.R. VOL. 149 PAGE 399
  - O.R. VOL. 225 PAGE 1447
  - O.R. VOL. 7 PAGE 469
  - PLAT VOL. 3-82B
  - PLAT VOL. 12 PAGE 344
  - BEARINGS ASSUMED



I CERTIFY THIS SURVEY TO BE CORRECT TO THE BEST OF MY KNOWLEDGE.

*Donald C. Baker*

DONALD C. BAKER P.S. 6938  
 DATE: JULY 17, 2019  
 KES  
 FILE NAME: WORK5\S-162-19\DCB-MLD

NOTE S.R. 4-13 CALLS FOR A STONE AT THIS CORNER I COULD NOT FIND THE STONE BUT RE-ESTABLISHED THE CORNER TO THE POSITION I BELIEVE THE STONE WAS LOCATED

PAUL A. STUTZMAN, TRUSTEE  
 ELLA A. STUTZMAN, TRUSTEE  
 O.R. 225-1447

JUNIOR A. STUTZMAN and EMMA A. STUTZMAN, TRUSTEES  
 O.R. 149-397  
 O.R. 149-399  
 PN 3400496000

WEAVER REAL ESTATE HOLDINGS, LTD.  
 O.R. 7-469

APPROVED FOR TRANSFER ONLY  
 NO SUBDIVISION PLAT REQUIRED  
 (O.R.C. 711.001 & 711.131)  
 Lot(s) not for building unless approved by Board of Health.  
 HCPC  
 HOLMES CO. PLANNING COMMISSION  
 By *[Signature]* Date *8/19/2019*

BAKER SURVEYING, LLC  
 138 N. CLAY STREET  
 MILLERSBURG, OHIO 44654  
 PH. 330-674-4788  
 FAX 330-674-6027  
 EMAIL: bakersurveying@gmail.com

PLAT APPROVED

*8/19/2019*