

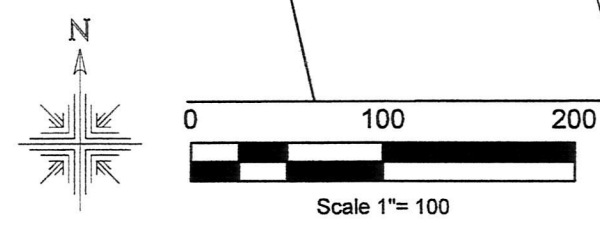
Salt Creek Township
4th Qtr. Lots 5 & 13
T-10 N; R-6 W
Holmes County, Ohio
SURVEYED FOR: Mervin Yoder

201900003052
B: 19 P: 3798
FILED FOR RECORD IN
HOLMES COUNTY, OH
ANITA HALL, COUNTY RECORDER
07/15/2019 10:34 AM
PLAT MED., 43.20
PAGES: 1

CRV 268 PGS 3669 +
3688

- ⊙ 1/2 Pinched Top Pipe Found
- 5/8" Rebar Found unless noted
- ⊙ 5/8" Capped Pin Found "Baker"
- 5/8" Capped Pin Set "Galbraith"
- △ Mag Nail Set
- Point

LINE	BEARING	DISTANCE
L1	N 79°31'34" E	42.07'
L2	S 10°42'53" E	10.75'
L3	S 79°17'07" W	42.02'
L4	N 10°57'39" W	10.92'
L5	N 79°31'34" E	33.49'
L6	S 10°57'39" E	11.13'
L7	N 10°42'53" W	10.54'
L8	S 44°33'13" E	21.42'
L9	N 15°37'20" W	68.01'
L10	N 79°31'34" E	190.00'



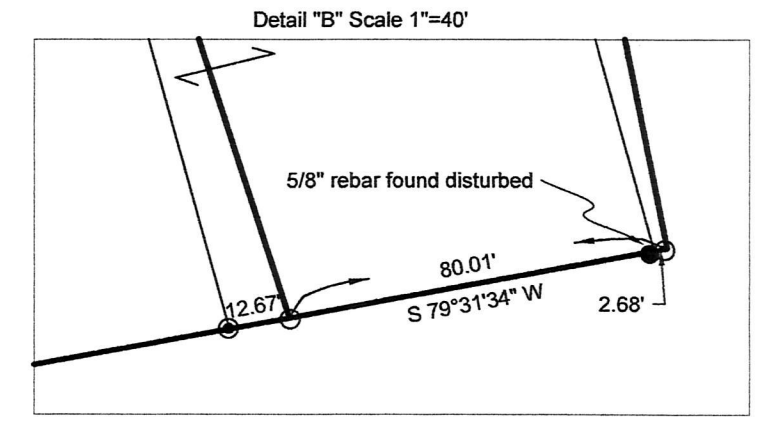
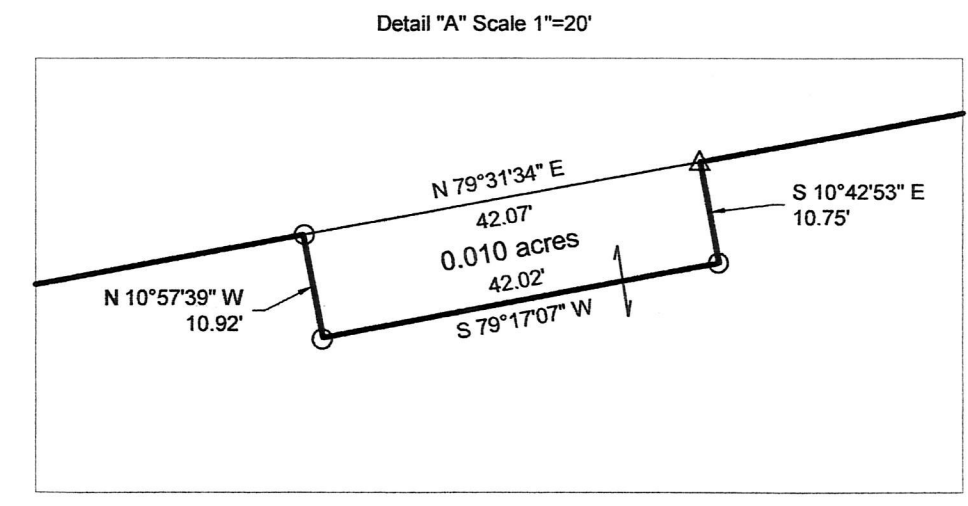
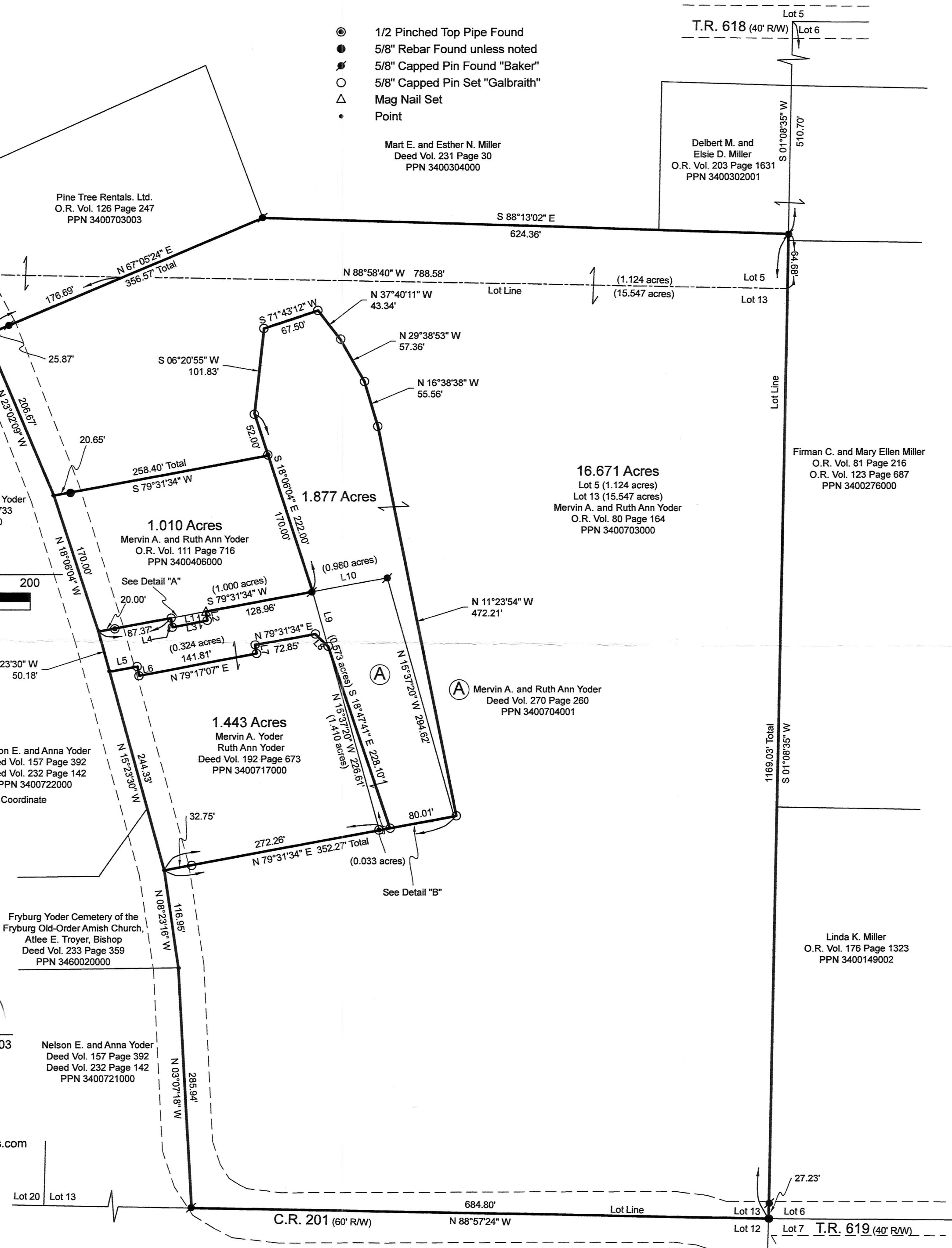
REFERENCES:

- Deeds as shown
- Plat Vol. 18 Page 6
 - Plat Vol. 07 Page 553
 - Plat Vol. 14 Page 742
 - Plat Vol. 08 Page 485
 - Plat Vol. 18 Page 281
 - Plat Vol. 19 Page 1273
 - Plat Vol. 19 Page 244
- Basis of Bearing from Grid North, Ohio State Plane Coordinate System, North Zone, NAD 83.



I certify this survey to be correct to the best of my knowledge.

Caleb Jerome Galbraith P.S. 8703
Date: May 28, 2019
Job ID: 7119
Pioneer Surveying & Services, LLC.
5434 Township Road 377
Millersburg, Ohio 44654
Phone: 330-276-0220
Email: caleb@pioneersurveyingandservices.com



APPROVED FOR TRANSFER ONLY
NO SUBDIVISION PLAT REQUIRED
(O.R.C. 711.001 & 711.131)
Lot(s) not for building unless approved by Board of Health.
HOLMES CO. PLANNING COMMISSION
By: [Signature] Date: 7/9/19

PLAT APPROVED

7/5/2019

