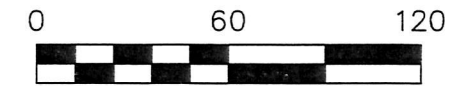


ORV 268 PG 2359



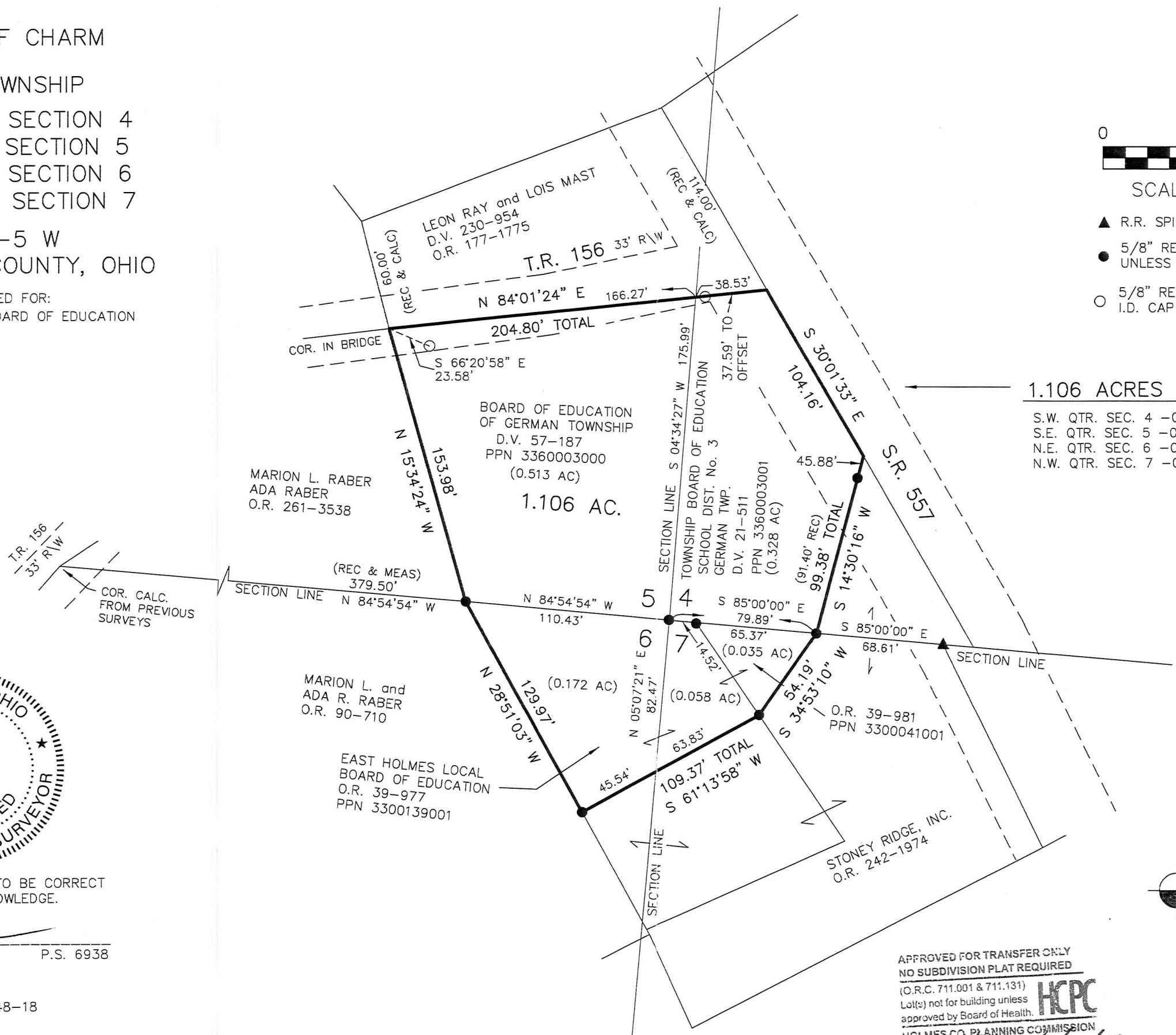
VILLAGE OF CHARM
 CLARK TOWNSHIP
 S.W. QTR. SECTION 4
 S.E. QTR. SECTION 5
 N.E. QTR. SECTION 6
 N.W. QTR. SECTION 7
 T-8 N; R-5 W
 HOLMES COUNTY, OHIO

SURVEYED FOR:
 EAST HOLMES BOARD OF EDUCATION



SCALE: 1"=60'

- ▲ R.R. SPIKE FOUND
- 5/8" REBAR FOUND UNLESS OTHERWISE NOTED
- 5/8" REBAR SET WITH I.D. CAP I.D. CAP MARKED "BAKER 6938"



1.106 ACRES TOTAL

- S.W. QTR. SEC. 4 -0.328 AC.
- S.E. QTR. SEC. 5 -0.513 AC.
- N.E. QTR. SEC. 6 -0.172 AC.
- N.W. QTR. SEC. 7 -0.093 AC.

- REFERENCES
- DEED VOL. 21 PAGE 511
 - DEED VOL. 57 PAGE 187
 - O.R. VOL. 39 PAGE 977
 - O.R. VOL. 39 PAGE 981
 - O.R. VOL. 261 PAGE 3538
 - O.R. VOL. 90 PAGE 710
 - O.R. VOL. 177 PAGE 1775
 - O.R. VOL. 242 PAGE 1974
 - PLAT VOL. 19 PAGE 2235
 - PLAT VOL. 17 PAGE 259
 - PLAT VOL. 17 PAGE 410
 - PLAT VOL. 16 PAGE 914
 - PLAT VOL. 10 PAGE 127
 - BEARINGS FROM PLAT VOL. 17 PAGE 259

NOTE:
 ALL SECTION LINES CALCULATED FROM PREVIOUS SURVEYS



BAKER SURVEYING, LLC
 138 N. CLAY STREET
 MILLERSBURG, OHIO 44654
 PH. 330-674-4788
 FAX 330-674-6027



I CERTIFY THIS SURVEY TO BE CORRECT TO THE BEST OF MY KNOWLEDGE.

Donald C. Baker

DONALD C. BAKER P.S. 6938
 DATE: AUG. 10, 2018
 ALG\KES\VJD\ADC
 FILE NAME: WORK4\S-348-18

APPROVED FOR TRANSFER ONLY
 NO SUBDIVISION PLAT REQUIRED
 (O.R.C. 711.001 & 711.131)
 Lot(s) not for building unless approved by Board of Health.
 HOLMES CO. PLANNING COMMISSION
 By *[Signature]* Date *6/7/19*

PLAT APPROVED

6/7/2019