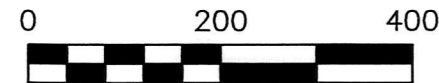


KILLBUCK TOWNSHIP  
S.E. QTR. SECTION 23  
T-8 N; R-7 W  
HOLMES COUNTY, OHIO

SURVEYED FOR: PAUL PARKER



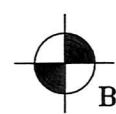
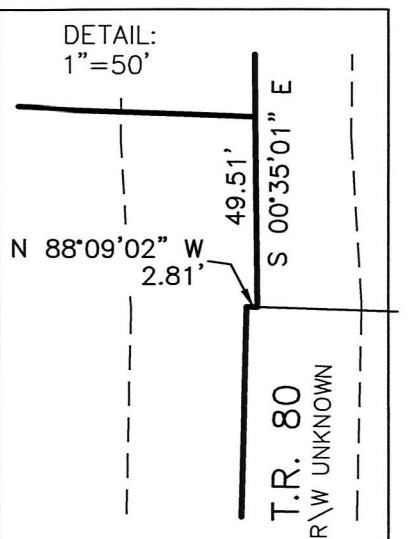
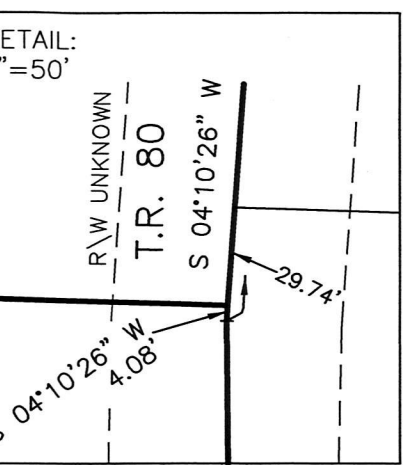
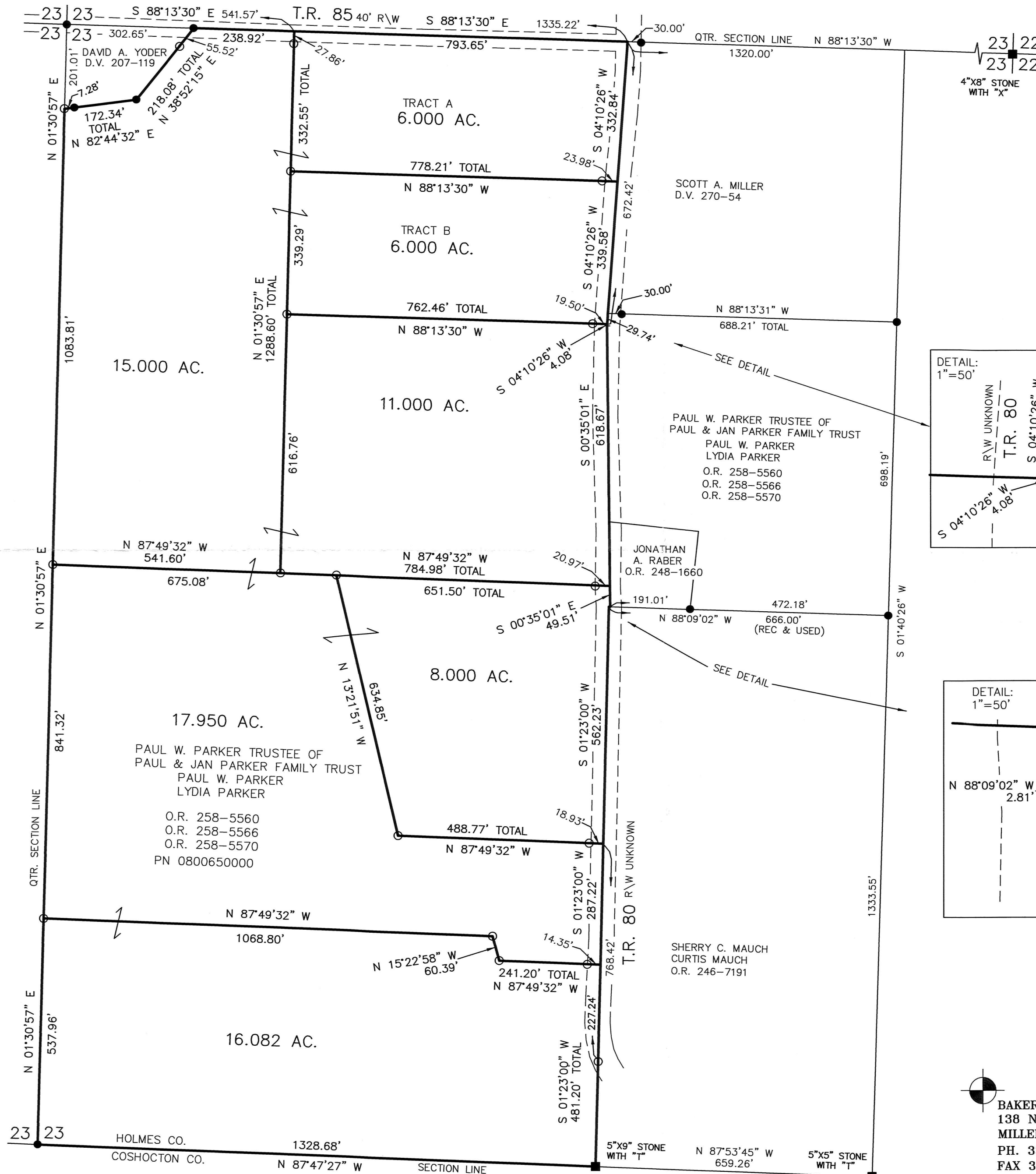
SCALE: 1"=200'

- STONE FOUND
- 5/8" REBAR FOUND UNLESS OTHERWISE NOTED
- 5/8" REBAR SET WITH I.D. CAP I.D. CAP MARKED "BAKER 6938"

REFERENCES

- DEED VOL. 207 PAGE 119
- DEED VOL. 270 PAGE 54
- O.R. VOL. 248 PAGE 1660
- O.R. VOL. 246 PAGE 7191
- O.R. VOL. 258 PAGE 5570
- PLAT VOL. 4 PAGE 127
- PLAT VOL. 8 PAGE 476
- PLAT VOL. 8 PAGE 510
- PLAT VOL. 14 PAGE 894
- PLAT VOL. 19 PAGE 3224
- PLAT VOL. 19 PAGE 2621

BEARINGS ASSUMED



BAKER SURVEYING, LLC  
138 N. CLAY STREET  
MILLERSBURG, OHIO 44654  
PH. 330-674-4788  
FAX 330-674-6027

PLAT APPROVED

4/2/2019

APPROVED FOR TRANSFER ONLY  
NO SUBDIVISION PLAT REQUIRED  
(O.R.C. 711.001 & 711.131)  
Lot(s) not for building unless  
approved by Board of Health.  
HOLMES CO. PLANNING COMMISSION  
By:                      Date: 3/27/19



I CERTIFY THIS SURVEY TO BE CORRECT TO THE BEST OF MY KNOWLEDGE.  
Donald C. Baker  
DONALD C. BAKER P.S. 6938  
DATE: MARCH 12, 2019  
KES\SBC  
FILE NAME: WORK4\S-80-19