

PAINT TOWNSHIP
FRACTIONAL SECTION 3
T-14 N; R-11 W
HOLMES COUNTY, OHIO

SURVEYED FOR: PRISCILLA SCHEUFLEL

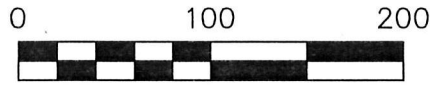
201800114261
B: 19 P: 3640
FILED FOR RECORD IN
HOLMES COUNTY, OH
ANITA HALL, COUNTY RECORDER
12/27/2018 01:52 PM
SMALL PLAT, 40.00
PAGES: 1

ORV 266 Pg 2968, 2970,
2912

T-15 R-11
34 | 35
3 | 2

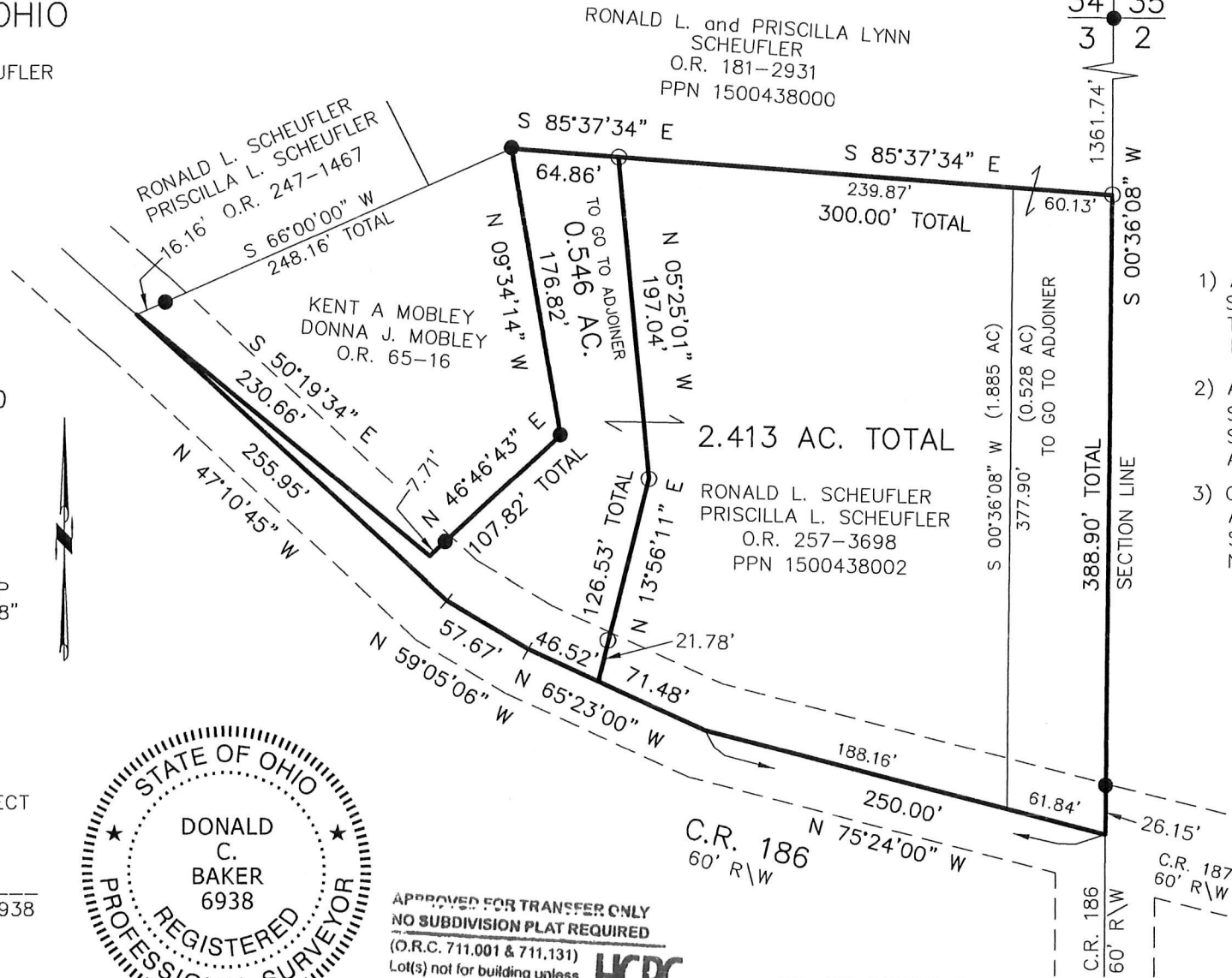
REFERENCES

O.R. VOL. 181 PAGE 2931
O.R. VOL. 257 PAGE 3698
PLAT VOL. 16 PAGE 87
PLAT VOL. 2 PAGE 400
BEARINGS FROM
PLAT VOL. 2 PAGE 400



SCALE: 1"=100'

- 5/8" REBAR FOUND UNLESS OTHERWISE NOTED
- 5/8" REBAR SET WITH I.D. CAP I.D. CAP MARKED "BAKER 6938"



MASTER PLAT
THE PURPOSE OF THIS SURVEY

- 1) ANNEX 0.546 ACRES FROM RONALD L. SCHEUFLEL AND PRISCILLA L. SCHEUFLEL TO RONALD L. SCHEUFLEL AND PRISCILLA LYNN SCHEUFLEL
- 2) ANNEX 0.528 ACRES FROM RONALD L. SCHEUFLEL AND PRISCILLA LYNN SCHEUFLEL TO RONALD L. SCHEUFLEL AND PRISCILLA L. SCHEUFLEL
- 3) CONSOLIDATE RONALD L. SCHEUFLEL AND PRISCILLA L. SCHEUFLEL'S SCHEUFLEL'S PARCELS INTO A NEW 2.413 ACRE PARCEL

I CERTIFY THIS SURVEY TO BE CORRECT TO THE BEST OF MY KNOWLEDGE.

Donald C. Baker

DONALD C. BAKER P.S. 6938

DATE: NOVEMBER 5, 2018

KES\BJM
FILE NAME: WORK4\S-593-18



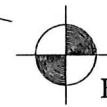
APPROVED FOR TRANSFER ONLY
NO SUBDIVISION PLAT REQUIRED
(O.R.C. 711.001 & 711.131)
Lot(s) not for building unless approved by Board of Health.
HOLMES CO. PLANNING COMMISSION



By *[Signature]* Date *12/26/18*

PLAT APPROVED

12/26/2018



BAKER SURVEYING, LLC
138 N. CLAY STREET
MILLERSBURG, OHIO 44654
PH. 330-674-4788
FAX 330-674-6027