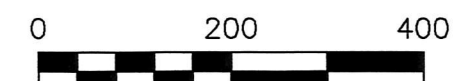
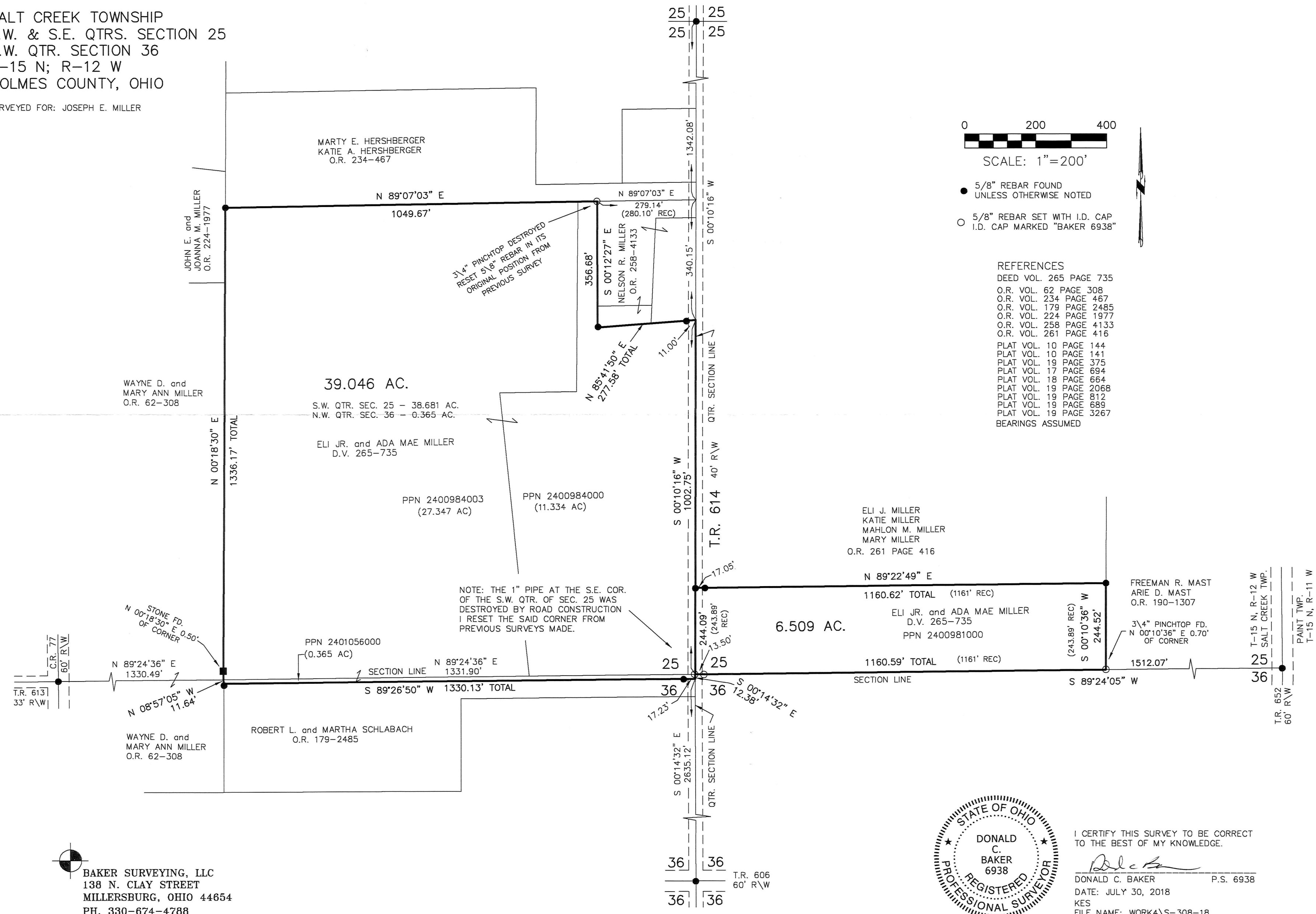


CRV 265 Pg 807

8 0 5 8 8 6 3
 TX: 4028972

SALT CREEK TOWNSHIP
 S.W. & S.E. QTRS. SECTION 25
 N.W. QTR. SECTION 36
 T-15 N; R-12 W
 HOLMES COUNTY, OHIO

SURVEYED FOR: JOSEPH E. MILLER



SCALE: 1"=200'

- 5/8" REBAR FOUND UNLESS OTHERWISE NOTED
- 5/8" REBAR SET WITH I.D. CAP I.D. CAP MARKED "BAKER 6938"

- REFERENCES
- DEED VOL. 265 PAGE 735
 - O.R. VOL. 62 PAGE 308
 - O.R. VOL. 234 PAGE 467
 - O.R. VOL. 179 PAGE 2485
 - O.R. VOL. 224 PAGE 1977
 - O.R. VOL. 258 PAGE 4133
 - O.R. VOL. 261 PAGE 416
 - PLAT VOL. 10 PAGE 144
 - PLAT VOL. 10 PAGE 141
 - PLAT VOL. 19 PAGE 375
 - PLAT VOL. 17 PAGE 694
 - PLAT VOL. 18 PAGE 664
 - PLAT VOL. 19 PAGE 2068
 - PLAT VOL. 19 PAGE 812
 - PLAT VOL. 19 PAGE 689
 - PLAT VOL. 19 PAGE 3267
- BEARINGS ASSUMED



I CERTIFY THIS SURVEY TO BE CORRECT TO THE BEST OF MY KNOWLEDGE.

Donald C. Baker
 DONALD C. BAKER P.S. 6938
 DATE: JULY 30, 2018
 KES
 FILE NAME: WORK4\S-308-18

BAKER SURVEYING, LLC
 138 N. CLAY STREET
 MILLERSBURG, OHIO 44654
 PH. 330-674-4788
 FAX 330-674-6027

APPROVED FOR TRANSFER ONLY
 NO SUBDIVISION PLAT REQUIRED
 (O.R.C. 711.001 & 711.131)
 Lot(s) not for building unless
 approved by Board of Health.
 HOLMES CO. PLANNING COMMISSION
 By *Ed* Date *8/16/18*

PLAT APPROVED

8/15/2018