

CRV 264 PG 7446

0 200 400



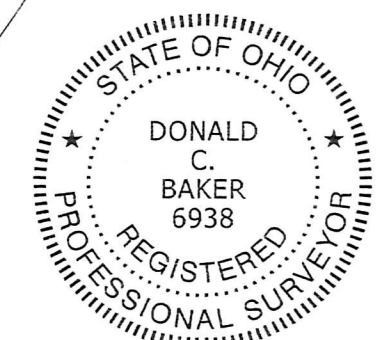
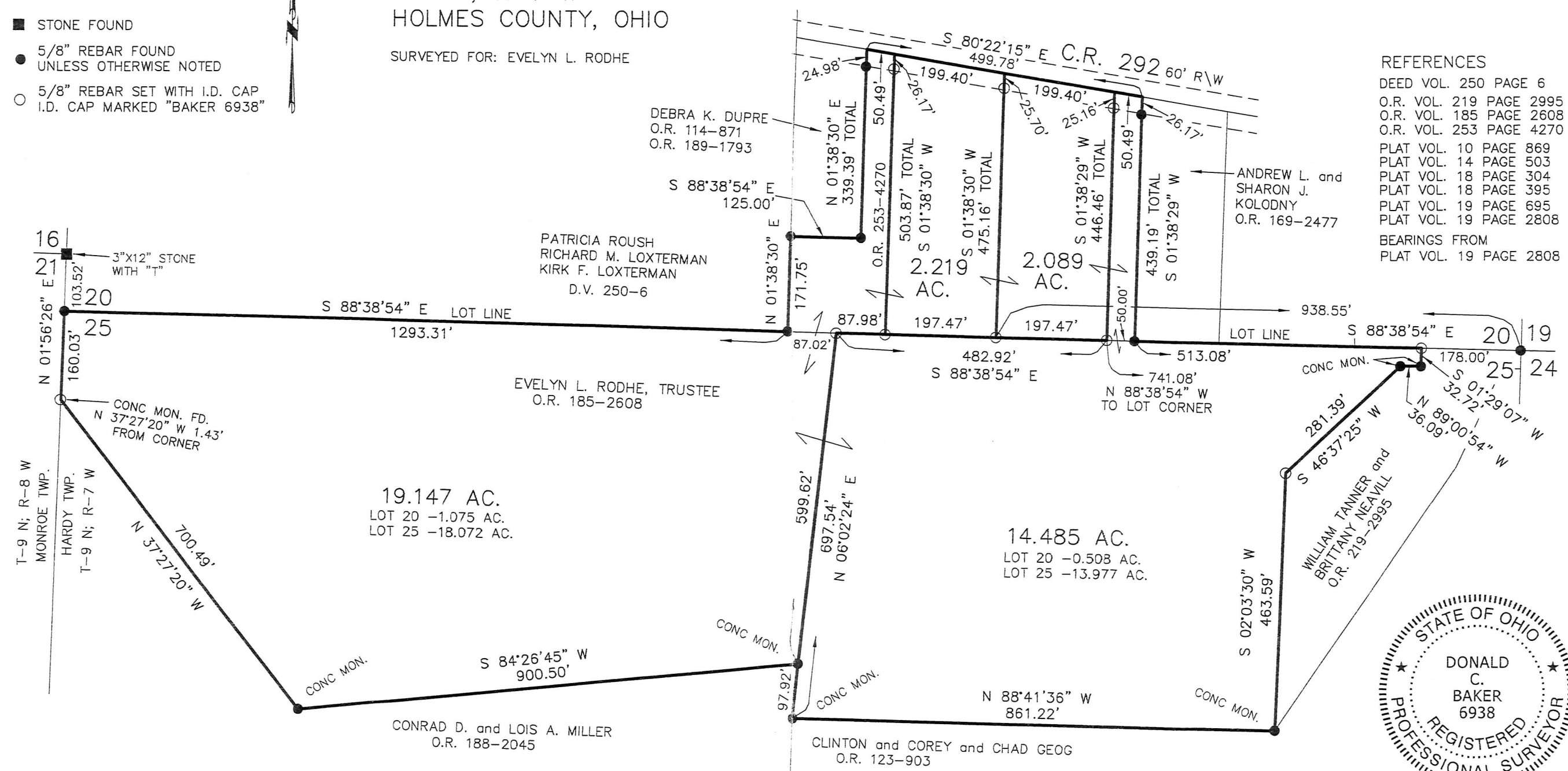
SCALE: 1"=200'

- STONE FOUND
- 5/8" REBAR FOUND UNLESS OTHERWISE NOTED
- 5/8" REBAR SET WITH I.D. CAP I.D. CAP MARKED "BAKER 6938"

HARDY TOWNSHIP  
 3RD. QTR., LOTS 20 & 25  
 T-9 N; R-7 W  
 HOLMES COUNTY, OHIO

SURVEYED FOR: EVELYN L. RODHE

- REFERENCES
- DEED VOL. 250 PAGE 6
  - O.R. VOL. 219 PAGE 2995
  - O.R. VOL. 185 PAGE 2608
  - O.R. VOL. 253 PAGE 4270
  - PLAT VOL. 10 PAGE 869
  - PLAT VOL. 14 PAGE 503
  - PLAT VOL. 18 PAGE 304
  - PLAT VOL. 18 PAGE 395
  - PLAT VOL. 19 PAGE 695
  - PLAT VOL. 19 PAGE 2808
  - BEARINGS FROM PLAT VOL. 19 PAGE 2808



I CERTIFY THIS SURVEY TO BE CORRECT TO THE BEST OF MY KNOWLEDGE.

*Donald C. Baker*  
 DONALD C. BAKER P.S. 6938

DATE: SEPT. 22, 2016  
 CJG\JPD\KES  
 FILE NAME: WORK4\S-372-16

PLAT APPROVED

7/6/2018

BAKER SURVEYING, LLC  
 138 N. CLAY STREET  
 MILLERSBURG, OHIO 44654  
 PH. 330-674-4788  
 FAX 330-674-6027

APPROVED FOR TRANSFER ONLY  
 NO SUBDIVISION PLAT REQUIRED  
 (O.R.C. 711.001 & 711.131)  
 Lot(s) not for building unless approved by Board of Health.  
 HOLMES CO. PLANNING COMMISSION  
 By     Date 7/22/18

