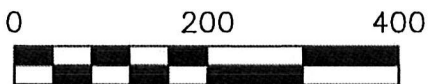




RIPLEY TOWNSHIP
S.W. QTR. SECTION 32
T-18 N; R-14 W
HOLMES COUNTY, OHIO



SCALE: 1"=200'



EASEMENT SURVEY

201800112031

B: 19 P: 3540

FILED FOR RECORD IN

HOLMES COUNTY, OH

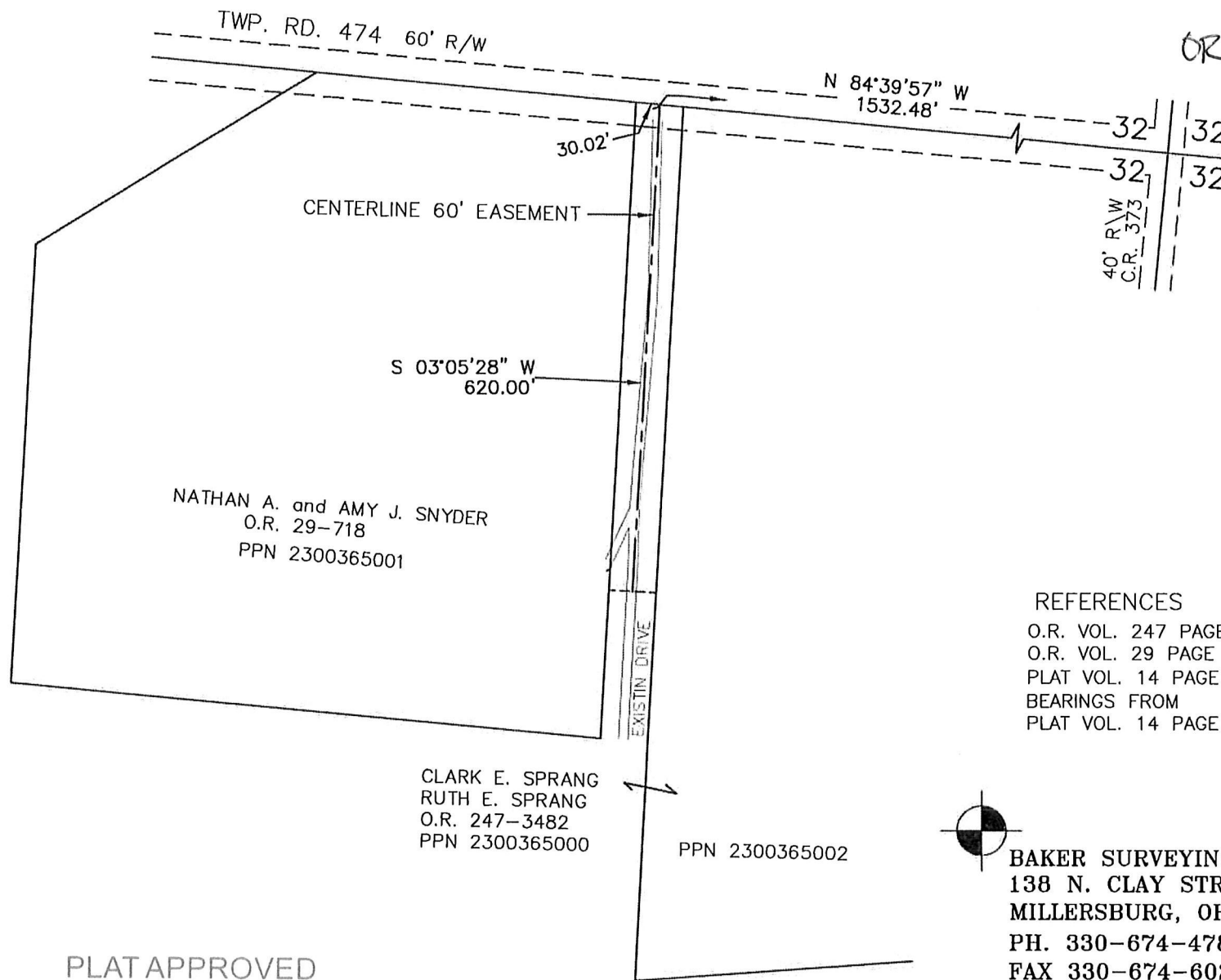
ANITA HALL, COUNTY RECORDER

08/13/2018 09:21 AM

SMALL PLAT . 40.00

PAGES: 1

ORV 264 PG 6638



I CERTIFY THIS SURVEY TO BE CORRECT TO THE BEST OF MY KNOWLEDGE.

Donald C. Baker

DONALD C. BAKER

P.S. 6938

DATE: AUG. 8, 2018

ALG

FILE NAME: WORK4\S-452-18

REFERENCES

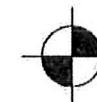
O.R. VOL. 247 PAGE 3482

O.R. VOL. 29 PAGE 718

PLAT VOL. 14 PAGE 734

BEARINGS FROM

PLAT VOL. 14 PAGE 734



BAKER SURVEYING, LLC
138 N. CLAY STREET
MILLERSBURG, OHIO 44654
PH. 330-674-4788
FAX 330-674-6027

PLAT APPROVED

8/9/2018 TB