

ORV 264 PGS 5602,  
 5605,  
 5608 &  
 5618



SCALE: 1"=200'

- STONE FOUND
- ▲ R.R. SPIKE FOUND
- 5/8" REBAR FOUND UNLESS OTHERWISE NOTED
- △ R.R. SPIKE SET
- 5/8" REBAR SET WITH I.D. CAP I.D. CAP MARKED "BAKER 6938"

REFERENCES

DEED VOL. 243 PAGE 36	PLAT VOL. 10 PAGE 252
DEED VOL. 251 PAGE 291	PLAT VOL. 14 PAGE 342
DEED VOL. 279 PAGE 753	PLAT VOL. 18 PAGE 427
O.R. VOL. 248 PAGE 7313	PLAT VOL. 19 PAGE 2496
O.R. VOL. 248 PAGE 2362	PLAT VOL. 14 PAGE 438
O.R. VOL. 209 PAGE 1759	PLAT VOL. 12 PAGE 194
O.R. VOL. 212 PAGE 324	PLAT VOL. 18 PAGE 427
O.R. VOL. 177 PAGE 2688	PLAT VOL. 4 PAGE 8
O.R. VOL. 263 PAGE 7446	PLAT VOL. 12 PAGE 653
	PLAT VOL. 19 PAGE 3478
	PLAT VOL. 19 PAGE 3477

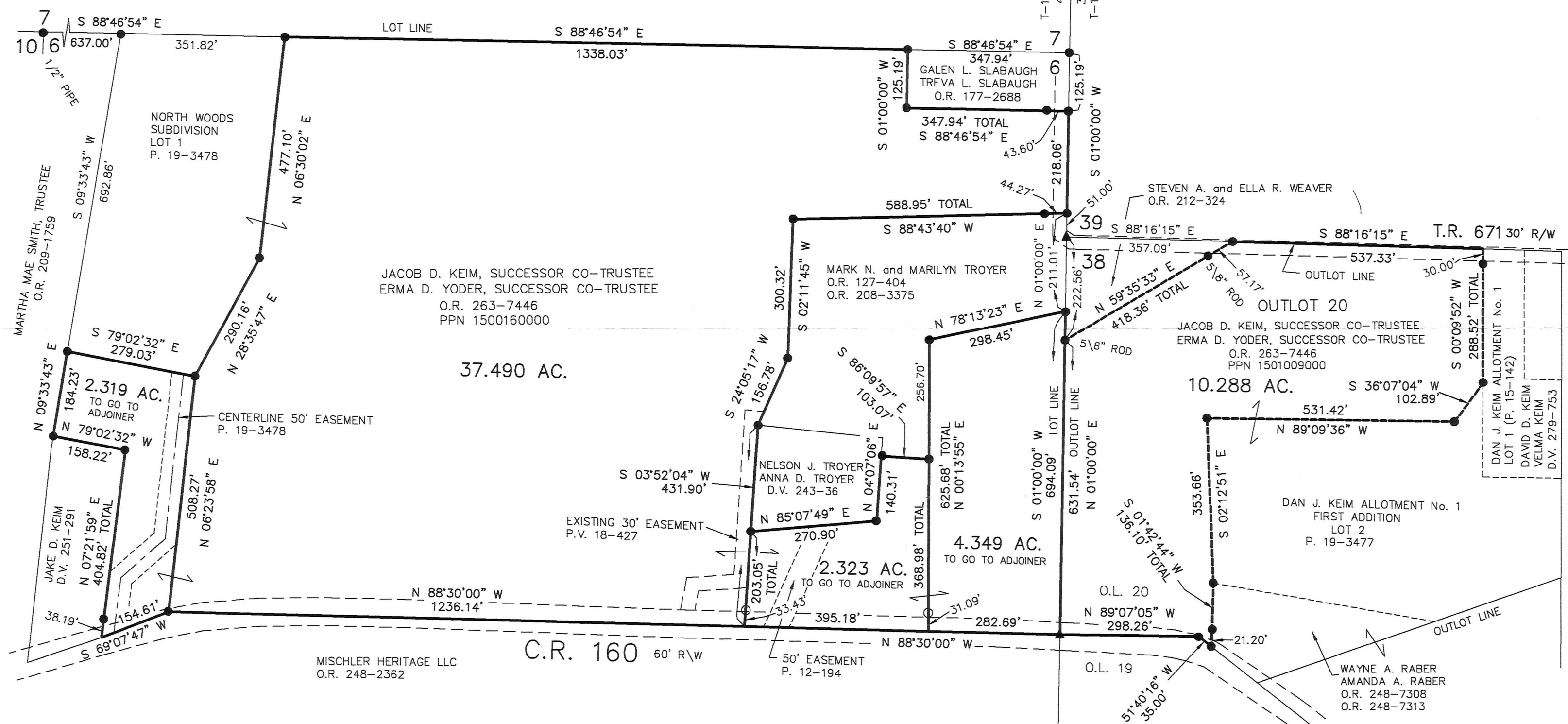
BEARINGS FROM  
 PLAT VOL. 18 PAGE 427

PAINT TOWNSHIP  
 4TH. QTR., LOT 6  
 T-10 N; R-5 W  
 HOLMES COUNTY, OHIO

VILLAGE OF WINESBURG  
 PART OF OUTLOT 20

PAINT TOWNSHIP  
 3RD. QTR., LOT 38  
 T-10 N; R-4 W  
 HOLMES COUNTY, OHIO

SURVEYED FOR: DAN J. KEIM



I CERTIFY THIS SURVEY TO BE CORRECT TO THE BEST OF MY KNOWLEDGE.

*Donald C. Baker*  
 DONALD C. BAKER P.S. 6938  
 DATE: JUNE 5, 2018  
 KES  
 FILE NAME: WORK4\S-181A-18



BAKER SURVEYING, LLC  
 138 N. CLAY STREET  
 MILLERSBURG, OHIO 44654  
 PH. 330-674-4788  
 FAX 330-674-6027

APPROVED FOR TRANSFER ONLY  
 NO SUBDIVISION PLAT REQUIRED  
 (O.R.C. 711.001 & 711.131)  
 Lots) not for building unless  
 approved by Board of Health  
 HOLMES CO. PLANNING COMMISSION  
 By: *[Signature]* Date: 7/2/18



PLAT APPROVED

6/27/2018