

ORV 264 Pg 5098

0 200 400



SCALE: 1"=200'

- STONE FOUND
- 5/8" REBAR FOUND UNLESS OTHERWISE NOTED
- 5/8" REBAR SET WITH I.D. CAP I.D. CAP MARKED "BAKER 6938"

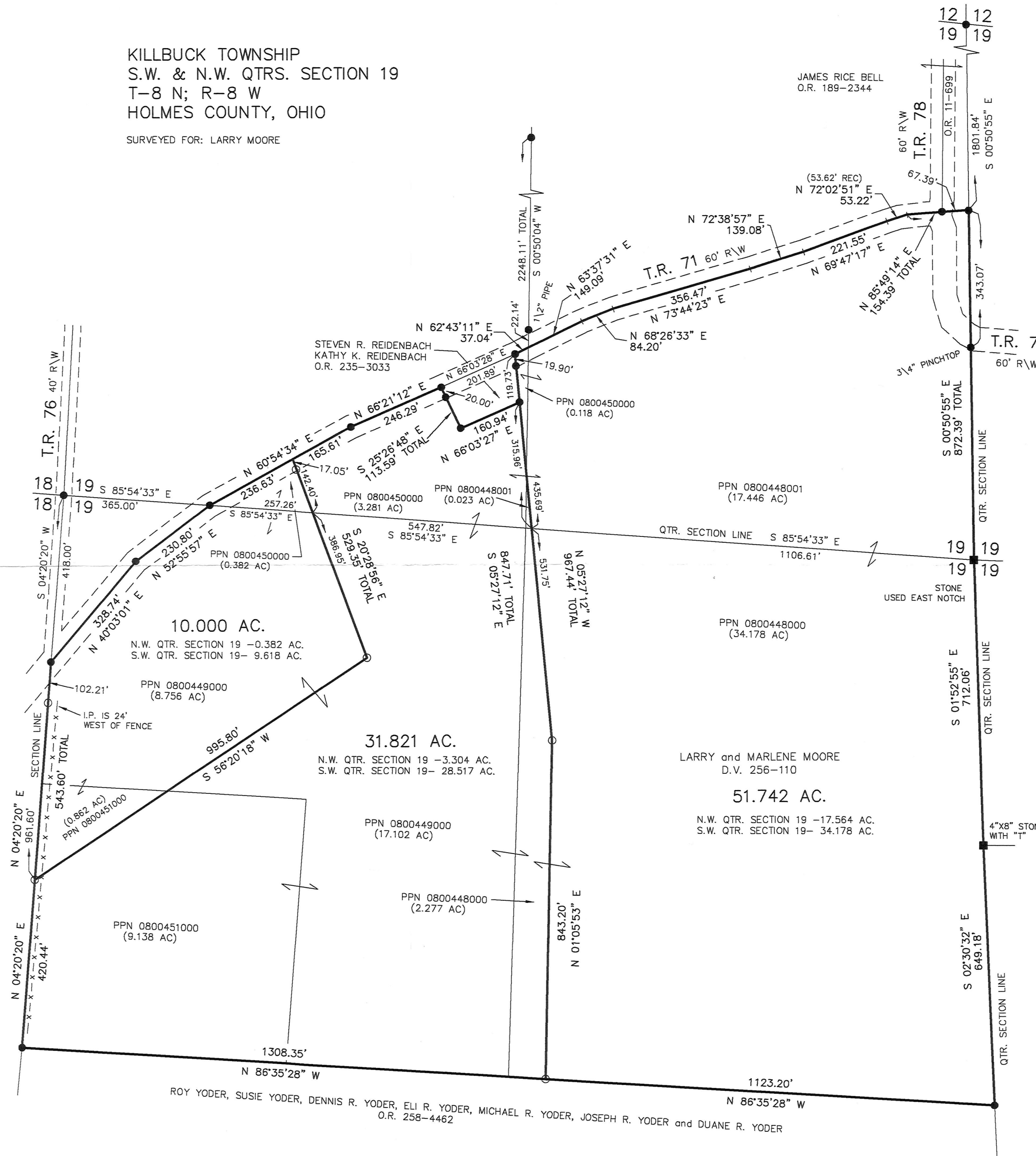
REFERENCES

DEED VOL. 256 PAGE 110
 O.R. VOL. 11 PAGE 699
 O.R. VOL. 258 PAGE 4462
 O.R. VOL. 235 PAGE 3033

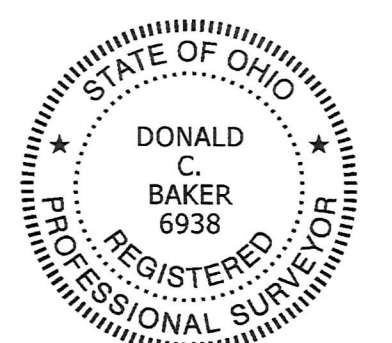
PLAT VOL. 9 PAGE 59
 PLAT VOL. 11 PAGE 183
 PLAT VOL. 16 PAGE 773
 PLAT VOL. 14 PAGE 37
 PLAT VOL. 19 PAGE 349
 PLAT VOL. 16 PAGE 798
 BEARINGS FROM
 PLAT VOL. 19 PAGE 349

KILLBUCK TOWNSHIP
 S.W. & N.W. QTRS. SECTION 19
 T-8 N; R-8 W
 HOLMES COUNTY, OHIO

SURVEYED FOR: LARRY MOORE



APPROVED FOR TRANSFER ONLY
 NO SUBDIVISION PLAT REQUIRED
 (O.R.C. 711.001 & 711.131)
 Lot(s) not for building unless
 approved by Board of Health.
 HOLMES CO. PLANNING COMMISSION
 By: [Signature] Date: 7/13/18



I CERTIFY THIS SURVEY TO BE CORRECT
 TO THE BEST OF MY KNOWLEDGE.
 [Signature]
 DONALD C. BAKER P.S. 6938
 DATE: JUNE 7, 2018
 FDB/VJD
 FILE NAME: WORK4\S-314-18

PLAT APPROVED

7/13/2018

BAKER SURVEYING, LLC
 138 N. CLAY STREET
 MILLERSBURG, OHIO 44654
 PH. 330-674-4788
 FAX 330-674-6027

