



HARDY TOWNSHIP
S.W. QTR. SECTION 14
T-9 N; R-6 W
HOLMES COUNTY, OHIO

SURVEYED FOR: EDWARD YODER



SCALE: 1"=200'

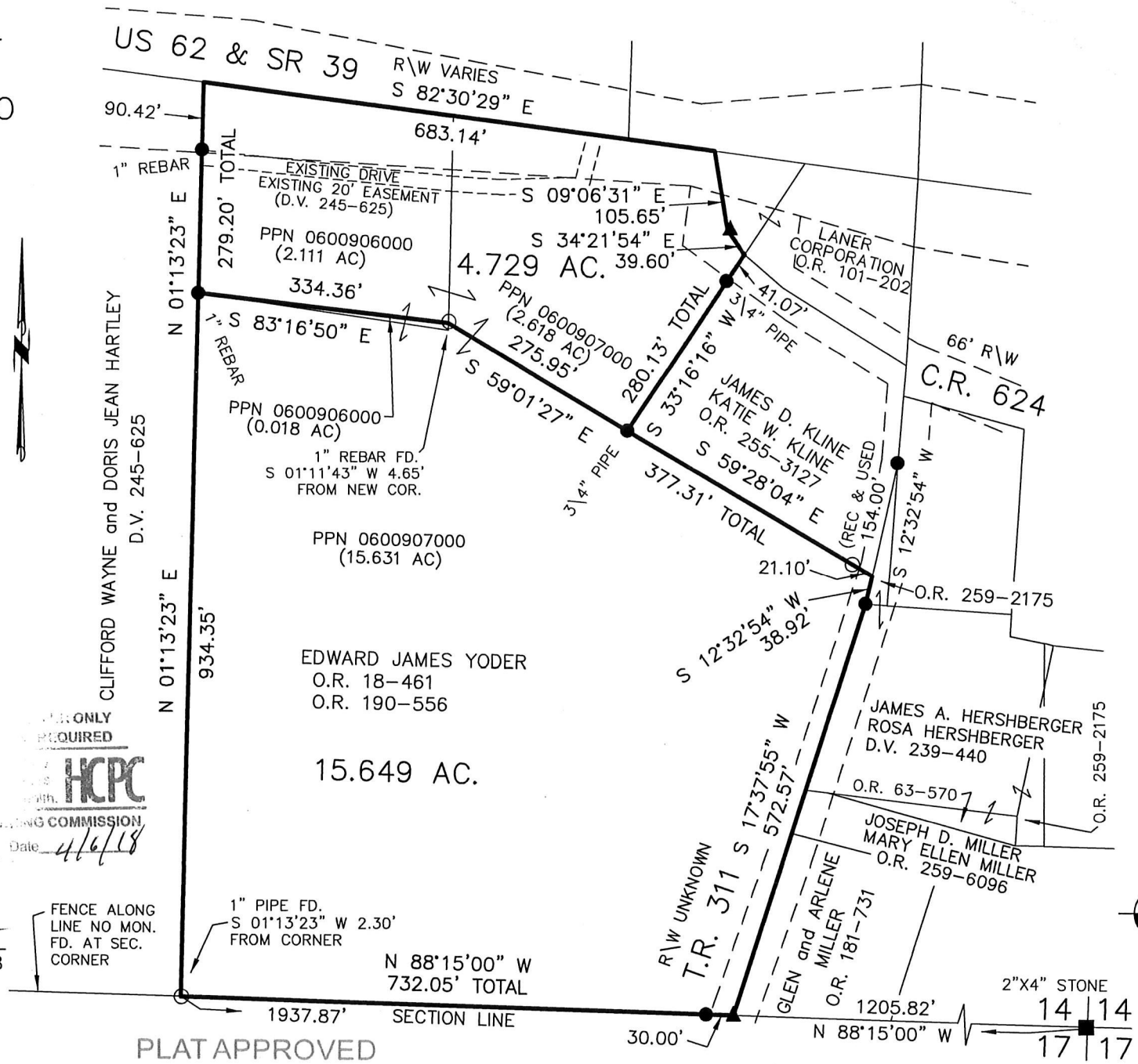
- STONE FOUND
- ▲ R.R. SPIKE FOUND
- 5/8" REBAR FOUND
- UNLESS OTHERWISE NOTED
- 5/8" REBAR SET WITH I.D. CAP
- I.D. CAP MARKED "BAKER 6938"



PERSON ONLY
REQUIRED
HCPC
HOLMES COUNTY PLANNING COMMISSION
By: *[Signature]* Date: 4/6/18

I CERTIFY THIS SURVEY TO BE CORRECT
TO THE BEST OF MY KNOWLEDGE.

[Signature]
DONALD C. BAKER P.S. 6938
DATE: MARCH 19, 2018
FDB\VJD
FILE NAME: WORK4\S-155-18



PLAT APPROVED

3/30/2018

201800110369

B: 19 P: 3446

FILED FOR RECORD IN
HOLMES COUNTY, OH
ANITA HALL, COUNTY RECORDER

04/27/2018 02:22 PM

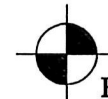
SMALL PLAT . 40.00

PAGES: 1

DRV 263 PG 5857

REFERENCES

- DEED VOL. 245 PAGE 625
- O.R. VOL. 190 PAGE 556
- O.R. VOL. 255 PAGE 3127
- PLAT VOL. 3 PAGE 78
- PLAT VOL. 8 PAGE 117
- PLAT VOL. 8 PAGE 863
- PLAT VOL. 4 PAGE 8
- PLAT VOL. 12 PAGE 18
- PLAT VOL. 19 PAGE 438
- PLAT VOL. 19 PAGE 3154
- BEARINGS FROM
PLAT VOL. 12 PAGE 18



BAKER SURVEYING, LLC
138 N. CLAY STREET
MILLERSBURG, OHIO 44654
PH. 330-674-4788
FAX 330-674-6027