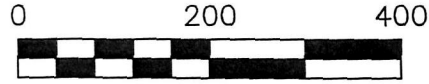




8 0 4 5 1 3 5  
Tx:4024019

PAINT TOWNSHIP  
N.W. QTR. SECTION 31  
T-15 N; R-11 W  
HOLMES COUNTY, OHIO

SURVEYED FOR: HENRY YODER



SCALE: 1"=200'

- 5/8" REBAR FOUND UNLESS OTHERWISE NOTED
- 5/8" REBAR SET WITH I.D. CAP I.D. CAP MARKED "BAKER 6938"



I CERTIFY THIS SURVEY TO BE CORRECT TO THE BEST OF MY KNOWLEDGE.

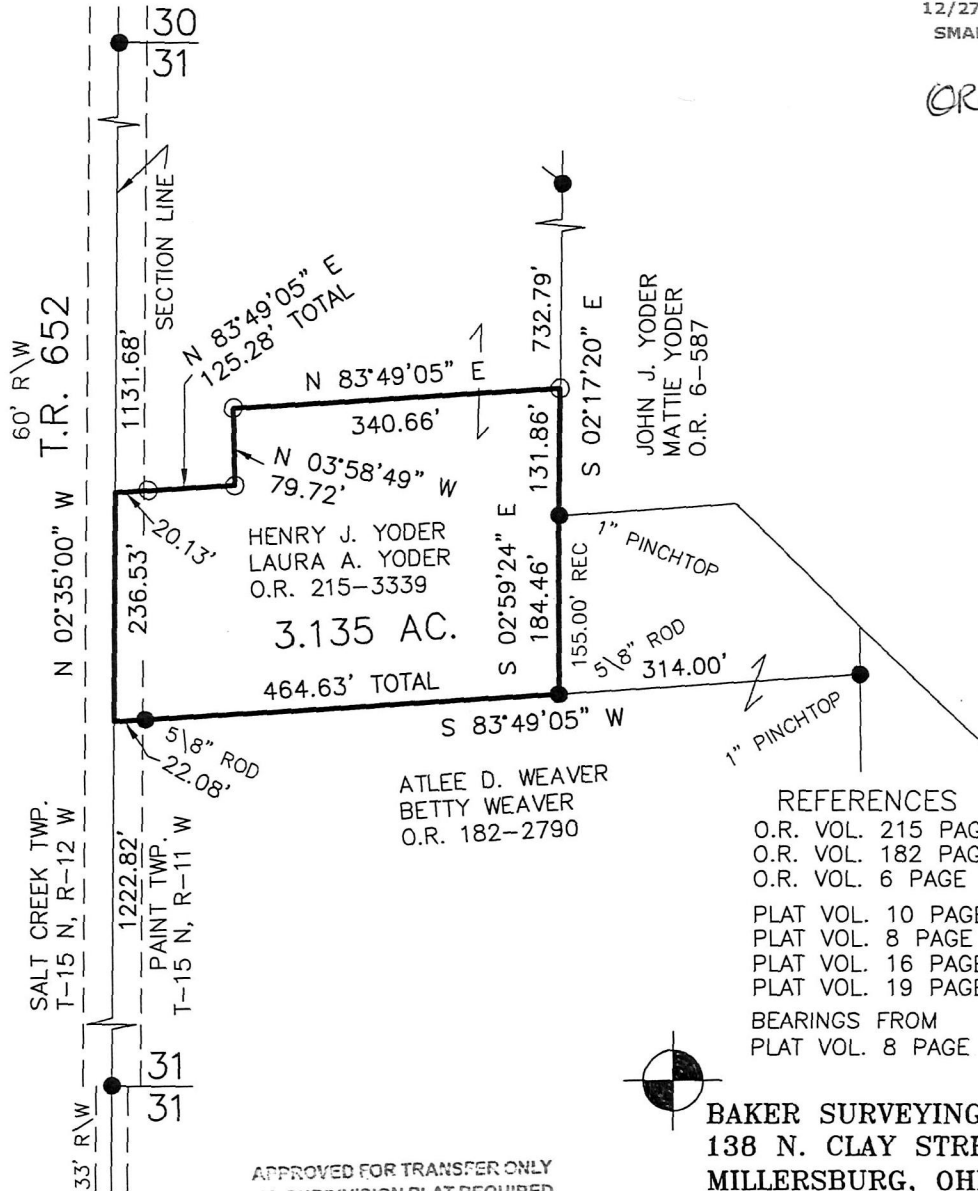
*Donald C. Baker*

DONALD C. BAKER P.S. 6938

DATE: DEC. 1, 2017

KES\VJD

FILE NAME: WORK4\S-581-17



201700108490

B: 19 P: 3364

FILED FOR RECORD IN

HOLMES COUNTY, OH

ANITA HALL, COUNTY RECORDER

12/27/2017 03:07 PM

SMALL PLAT . 40.00

PAGES: 1

ORV 262 PG 3593

REFERENCES

- O.R. VOL. 215 PAGE 3339
- O.R. VOL. 182 PAGE 2790
- O.R. VOL. 6 PAGE 587

- PLAT VOL. 10 PAGE 413
- PLAT VOL. 8 PAGE 860
- PLAT VOL. 16 PAGE 691
- PLAT VOL. 19 PAGE 3176

BEARINGS FROM  
PLAT VOL. 8 PAGE 860

BAKER SURVEYING, LLC  
138 N. CLAY STREET  
MILLERSBURG, OHIO 44654  
PH. 330-674-4788  
FAX 330-674-6027

APPROVED FOR TRANSFER ONLY  
NO SUBDIVISION PLAT REQUIRED

(O.R.C. 711.001 & 711.131)

Lot(s) not for building unless  
approved by Board of Health.



HOLMES CO. PLANNING COMMISSION

By *[Signature]* Date 12/15/17

PLAT APPROVED

12/14/2017