

ORV 262 PG 2887

HARDY TOWNSHIP
 N.W. QTR. SECTION 4
 T-9 N; R-6 W
 HOLMES COUNTY, OHIO

SURVEYED FOR: ROY SCHLABACH

0 200 400



SCALE: 1"=200'

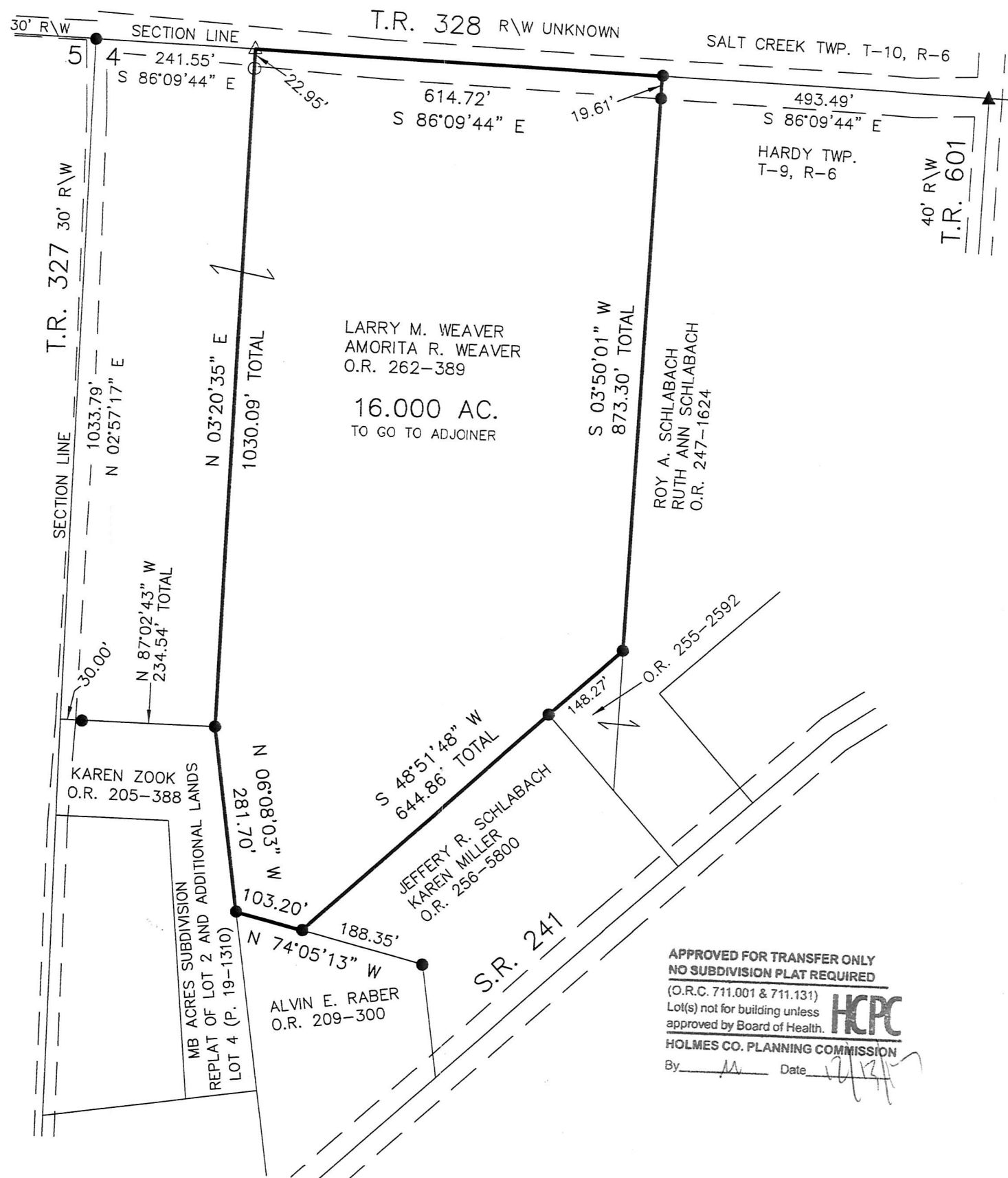
- ▲ R.R. SPIKE FOUND
- 5/8" REBAR FOUND UNLESS OTHERWISE NOTED
- △ R.R. SPIKE SET
- 5/8" REBAR SET WITH I.D. CAP I.D. CAP MARKED "BAKER 6938"

REFERENCES

- O.R. VOL. 205 PAGE 388
- O.R. VOL. 209 PAGE 300
- O.R. VOL. 247 PAGE 1624
- O.R. VOL. 256 PAGE 5800
- O.R. VOL. 262 PAGE 389
- O.R. VOL. 255 PAGE 2592
- PLAT VOL. 19 PAGE 2377
- PLAT VOL. 19 PAGE 2901
- PLAT VOL. 19 PAGE 2923
- PLAT VOL. 19 PAGE 2736
- PLAT VOL. 19 PAGE 1465
- PLAT VOL. 19 PAGE 1310
- BEARINGS FROM PLAT VOL. 19 PAGE 2736



BAKER SURVEYING, LLC
 138 N. CLAY STREET
 MILLERSBURG, OHIO 44654
 PH. 330-674-4788
 FAX 330-674-6027
 EMAIL: bakersurveying@gmail.com



APPROVED FOR TRANSFER ONLY
 NO SUBDIVISION PLAT REQUIRED
 (O.R.C. 711.001 & 711.131)
 Lot(s) not for building unless approved by Board of Health.
 HOLMES CO. PLANNING COMMISSION
 By: *M* Date: 12/13/17



I CERTIFY THIS SURVEY TO BE CORRECT TO THE BEST OF MY KNOWLEDGE.

A-L

AARON L. GERBER P.S. 8379
 DATE: DEC. 4, 2015
 ALG
 FILE NAME: WORK5\S-585-17

PLAT APPROVED

12/8/2017 TD

