

FIRE DEPARTMENT ACCESS EASEMENT

RIPLEY TOWNSHIP
 N.W. QTR. SECTION 29
 T-18 N; R-14 W
 HOLMES COUNTY, OHIO

SURVEYED FOR: H & H CUSTOM HOMES, LLC

201700108253

B: 19 P: 3355

FILED FOR RECORD IN

HOLMES COUNTY, OH

ANITA HALL, COUNTY RECORDER

12/11/2017 01:19 PM

SMALL PLAT . 40.00

REFERENCES

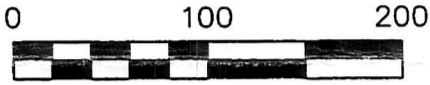
O.R. VOL. 191 PAGE 2817

O.R. VOL. 208 PAGE 2207

PLAT VOL. 19 PAGE 235

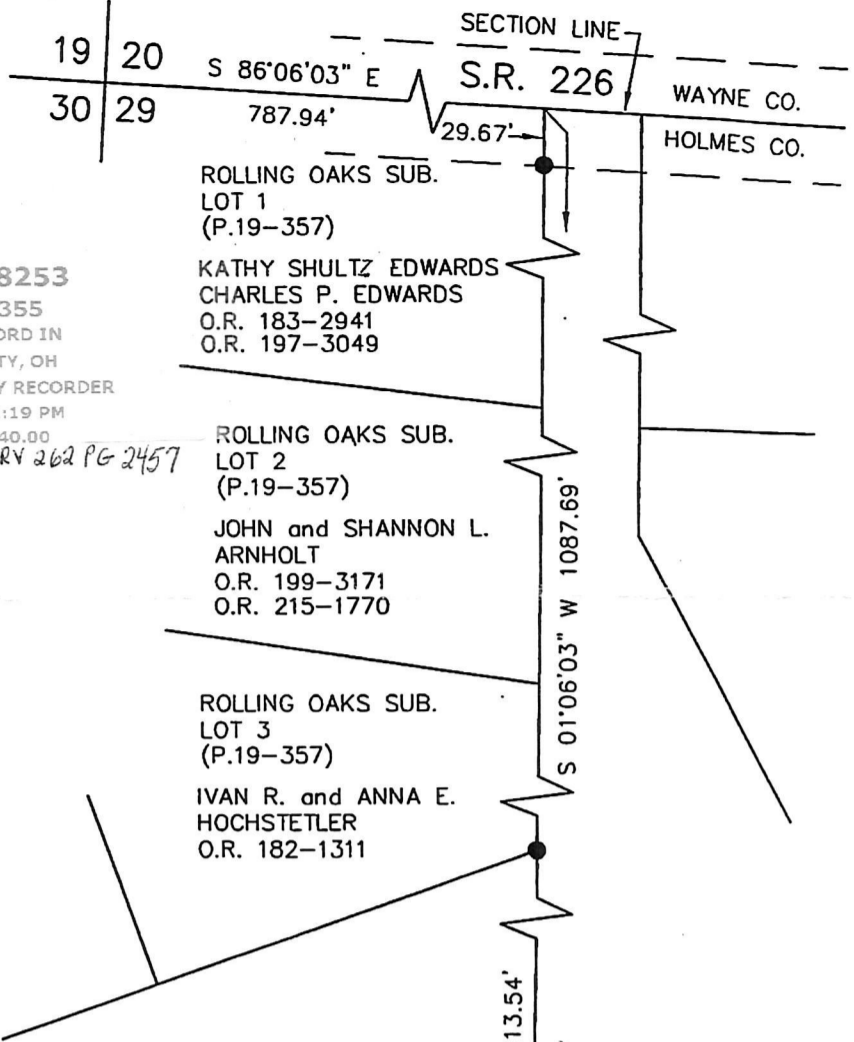
BEARINGS FROM PLAT VOL. 19 PAGE 235

ORV 262 PG 2457



SCALE: 1"=100'

● 5/8" REBAR FOUND
 UNLESS OTHERWISE NOTED



0.187 ACRES
 IN EASEMENT

DOMETIC CORPORATION
 O.R. 208-2207

PRAIRIE WEST, LTD.
 O.R. 191-2817

PLAT APPROVED

Holmes County
 Planning Commission
 Date

11/29/2017



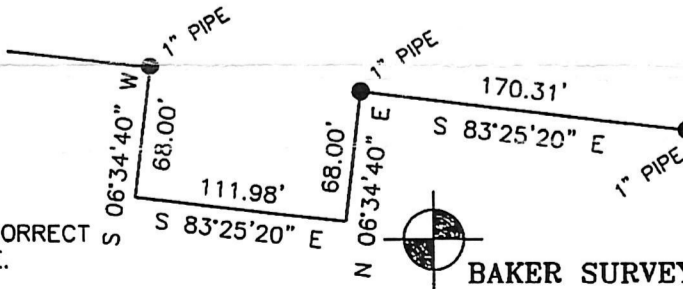
I CERTIFY THIS SURVEY TO BE CORRECT TO THE BEST OF MY KNOWLEDGE.

Aaron L. Gerber P.S. 8379

DATE: OCTOBER 9, 2017

ALG/KES

FILE NAME: 2017WORKS\S-478-17\ALG



BAKER SURVEYING, LLC
 138 N. CLAY STREET
 MILLERSBURG, OHIO 44654
 PH. 330-674-4788
 FAX 330-674-6027
 EMAIL: bakersurveying@gmail.com