

0 200 400



SCALE: 1"=200'

- 5/8" REBAR FOUND UNLESS OTHERWISE NOTED
- 5/8" REBAR SET WITH I.D. CAP I.D. CAP MARKED "BAKER 6938"

REFERENCES

DEED VOL. 228 PAGE 107  
 O.R. VOL. 224 PAGE 1219  
 PLAT VOL. 2 PAGE 382  
 PLAT VOL. 19 PAGE 346  
 PLAT VOL. 19 PAGE 1793  
 BEARINGS FROM  
 PLAT VOL. 2 PAGE 382

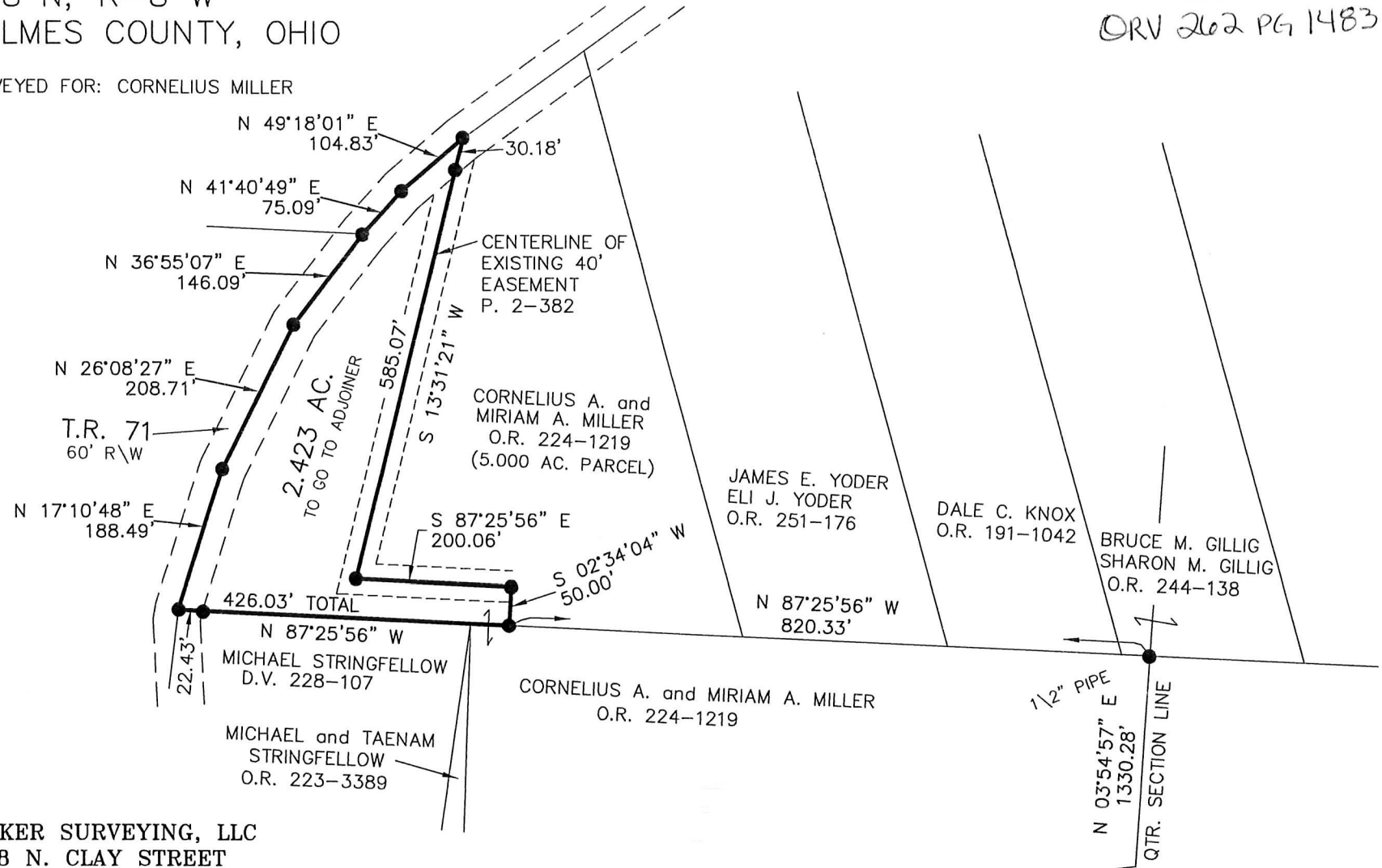


I CERTIFY THIS SURVEY TO BE CORRECT TO THE BEST OF MY KNOWLEDGE.

*Donald C. Baker*  
 DONALD C. BAKER P.S. 6938  
 DATE: OCT. 4, 2017  
 KES  
 FILE NAME: WORK4\S-462-17

KILLBUCK TOWNSHIP  
 N.W. QTR. SECTION 23  
 T-8 N; R-8 W  
 HOLMES COUNTY, OHIO

SURVEYED FOR: CORNELIUS MILLER



201700108069  
 B: 19 P: 3348  
 FILED FOR RECORD IN  
 HOLMES COUNTY, OH  
 ANITA HALL, COUNTY RECORDER  
 11/27/2017 03:14 PM  
 SMALL PLAT . 40.00  
 PAGES: 1  
 ORV 262 PG 1483



BAKER SURVEYING, LLC  
 138 N. CLAY STREET  
 MILLERSBURG, OHIO 44654  
 PH. 330-674-4788  
 FAX 330-674-6027

APPROVED FOR TRANSFER ONLY  
 NO SUBDIVISION PLAT REQUIRED  
 (O.R.C. 711.001 & 711.131)  
 Lot(s) not for building unless approved by Board of Health.  
 HCPC  
 HOLMES CO. PLANNING COMMISSION  
 By: *[Signature]* Date: 10/24/17

PLAT APPROVED

10/23/2017

23	23
23	23